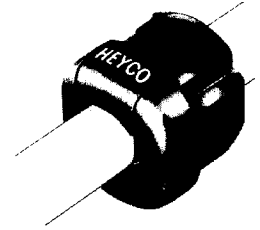
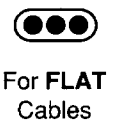


STRAIGHT-THRU STRAIN RELIEF BUSHINGS



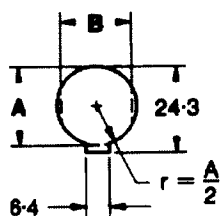
Recognised under the Component Program of Underwriters' Laboratories
 File No. E-15331 & Certified by Canadian Standards Association File No. LR-8919

PART NUMBER AND COLOUR		UL / CSA DESCRIPTION	APPROXIMATE CABLE DIMENSIONS	CHASSIS DIMENSIONS			CABLE SECTION
				A Hole Diameter	B To Prevent Rotation	D Maximum Thickness	
Black	White						
300 1060	300 1061	SR-2M-4	3 to 4.7	9.5	8.4	1.6	10.3
300 1157	300 1158	SR-5MN-3	5.6 to 6.3	12.7 - 13.1	11.5	1.6	11.0
300 1140	300 1141	SR-5M-3	5.6 to 6.3	12.7 - 13.1	11.5	2.5	11.0
300 1150	300 1151	SR-5N-4	6.4 to 7.4	12.7 - 13.1	11.5	1.6	11.0
300 1147	300 1148	SR-5P-4	6.4 to 7.4	12.7 - 13.1	11.5	2.5	11.0
300 1154	300 1155	SR-5L-1	6.4 to 7.4	12.7 - 13.1	11.5	4.0	11.0
300 1137	300 1138	SR-5P3-4	6.5 to 7.5	12.7 - 13.1	11.5	2.5	11.0
300 1184	300 1185	SR-6W-1	7.6	12.7	11.8	2.3	11.0
300 1217	300 1218	SR-6N-4	7.6	15.9	14.0	1.6	14.8
300 1210	300 1211	SR-6P-4	7.6	15.9	14.0	3.2	14.8
300 1200	300 1201	SR-6N3-4	8.2 to 9.2	15.9	14.0	1.6	14.8
300 1207	300 1208	SR-6P3-4	8.2 to 9.2	15.9	14.0	3.2	14.8
			7.6	15.9	14.0	4.0	17.1
300 1214	300 1215	SR-6L-1	8.2	16.7	14.0	4.0	17.1
			8.4	16.7	14.0	4.0	17.1
			9.2	17.4	14.0	4.0	17.1
300 1240	300 1241	SR-7K-2	8.2 to 9.2	22.2	19.6	3.2	19.0
300 1271	300 1272	SR-7KR-2	8.3 to 9.1	22.2	19.6	3.2	19.0
300 1244	300 1245	SR-7N-2	9.1 to 10.9	19.0 - 19.8	16.8	1.6	19.0
			9.2 to 10.5	19.0	16.8	3.2	19.0
300 1237	300 1238	SR-7P-2	11.0	19.8	16.8	3.2	19.0
300 1247	300 1248	SR-7W-2	9.4 to 11.0	22.2	19.6	3.2	19.0
300 1250	300 1251	SR-7L-2	9.4 to 11.0	22.2	19.6	5.1	19.0
300 1260	300 1261	SR-8P-2	13.5 to 15.2	22.2	21.3	3.2	20.0
300 1274	300 1275	SR-8L-1	13.5 to 15.2	22.2	21.3	5.1	20.6
300 1254	300 1255	SR-8N-1	13.5 to 15.2	22.2	21.3	1.6	20.2
			15.2 to 16.3	28.0	25.5	7.2	25.2
300 1287	300 1288	SR-9P-2	17.5	30.2	25.5	7.2	25.2
300 1497	300 1498	SR-31-2	10.8 to 12.0	22.2	21.3	3.2	20.6
300 1017	300 1018	SR-2P-4	2.3 x 4.5 to 2.8 x 5.3	9.5	8.7	1.6	10.3
300 1034	300 1035	SR-2L-1	2.3 x 4.5 to 2.8 x 5.3	9.5	8.7	3.2	10.3
300 1074	300 1075	SR-3A-4 †	3.0 x 5.6	11.0	9.9	1.2	10.3
300 1077	300 1078	SR-3P-4	3.0 x 5.6	11.0	9.9	1.6	10.3
300 1104	300 1105	SR-3W-1	3.0 x 5.6	11.0	9.9	2.5	10.3
300 1094	300 1095	SR-3L-1	3.0 x 5.6	11.0	9.9	4.0	10.3
300 1130	300 1131	SR-4P-4	3.0 x 5.6	12.7	11.3	2.5	11.2
300 1181	300 1182	SR-4A-6 †	3.0 x 7.1 to 3.8 x 7.6	12.7 - 13.1	11.8	1.2	13.8 *
300 1187	300 1188	SR-4N-6	3.0 x 7.1 to 3.8 x 7.6	12.7 - 13.1	11.8	1.6	13.8 *
300 1190	300 1191	SR-4K-6	3.0 x 7.1 to 3.8 x 7.6	12.7 - 13.1	11.8	2.5	13.8 *
300 1120	300 1121	SR-4N-4	3.0 x 7.1 to 3.8 x 7.6	12.7 - 13.1	11.8	1.6	10.3
300 1117	300 1118	SR-4K-4	3.0 x 7.1 to 3.8 x 7.6	12.7 - 13.1	11.8	2.5	10.3
300 1127	300 1128	SR-4L-4	3.0 x 7.1 to 3.8 x 7.6	12.7 - 13.1	11.8	4.0	10.3
300 1114	300 1115	SR-4K-1	3.0 x 7.1 to 4.1 x 8.6	12.7 - 13.1	11.8	2.5	12.7
300 1124	300 1125	SR-4L-1	3.0 x 7.1 to 4.1 x 8.6	12.7 - 13.1	11.8	4.8	12.7
300 1170	300 1171	SR-5KN-4	3.8 x 8.9 to 5.0 x 10.4	14.3	13.4	1.6	15.4
300 1167	300 1168	SR-5K-4	3.8 x 8.9 to 5.0 x 10.4	14.3	13.4	3.2	15.4
300 1160	300 1161	SR-6N4-4	3.8 x 10.2 to 4.1 x 10.4	15.9	14.0	1.6	10.3
300 1163	300 1164	SR-6P4-4	3.8 x 10.2 to 4.1 x 10.4	15.9	14.0	2.5	10.3
300 1174	300 1175	SR-5W-1	3.8 x 10.4	14.3	13.4	3.2	15.4
300 1484	300 1485	SR-30-1 **	4.8 x 8.8 to 5.1 x 11.0	14.3 **	18.5 **	3.2	17.2
300 1497	300 1498	SR-31-2	8.0 x 16.5	22.2	21.3	3.2	20.6
300 1504	300 1505	SR-33-1 **	5.1 x 9.5 to 6.1 x 13.0	19.0 **	22.3 **	3.2	20.0
300 1517	300 1518	SR-34-2	6.1 x 10.5 to 7.5 x 16.5	22.2	21.3	3.2	20.6
300 1804	300 1805	SR-300-1 **	1.5 x 10.0	9.5 **	16.0 **	4.0	11.7
300 1814	300 1815	SR-302-1 **	1.5 x 10.0	9.5 **	16.0 **	2.5	11.7

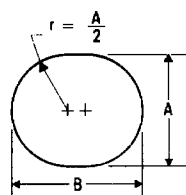


Material - NYLON 66

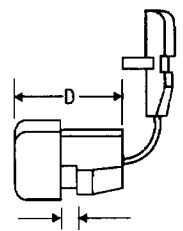
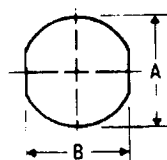
Tolerances: D = ± .41



Amended mounting hole for SR-7KR-2 ONLY



Elongated Hole



Maximum chassis thickness - Part actual y has additional clearance