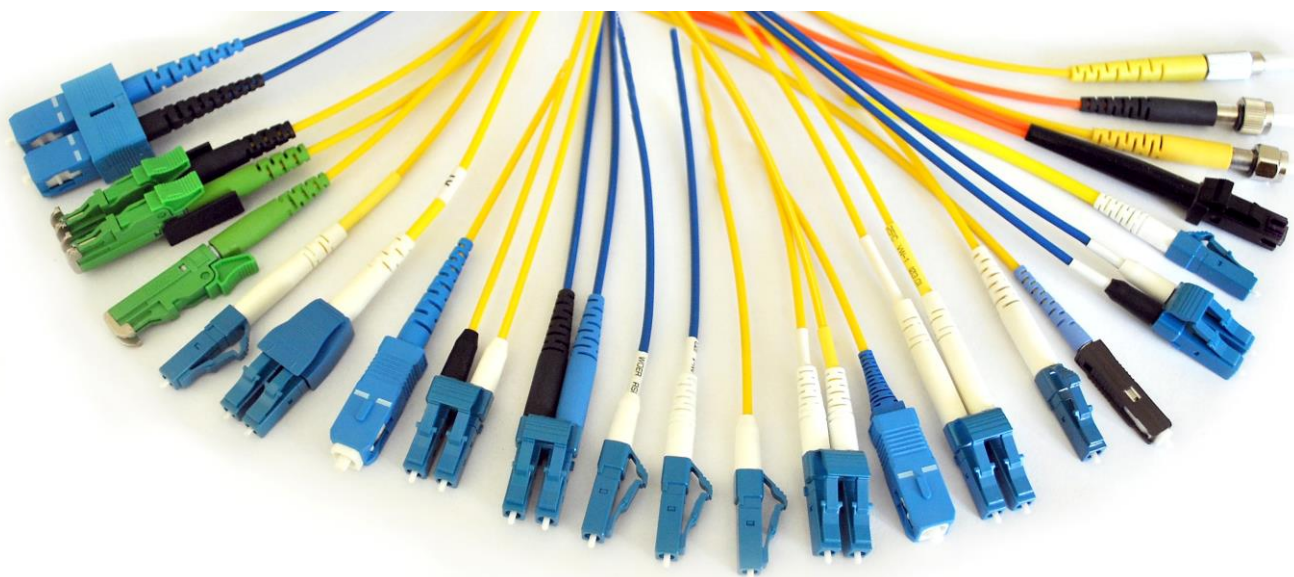


# Patchcords



## T E C H N I C A L   S P E C I F I C A T I O N



1. Connectors available:

SC / LC / E2000 / ST / FC / SMA / MU / DIN / MTRJ .

SC Simplex L 40 mm



SC Simplex



SC Duplex



LC Simplex Crimp Type L 35mm



LC Simplex Crimp Type L 40mm



LC Simplex Crimp Type



LC Duplex Crimp Type L 35mm



LC Duplex Crimp Type L 40mm



LC Duplex Crimp Type



LC Simplex Standard Type L35mm



LC Simplex Standard Type L40mm



LC Simplex Standard Type



LC Duplex Standard Type L 35mm



LC Duplex Standard Type L 40mm



LC Duplex Standard Type



LC Uniboot



E2000 Simplex Crimp Type



E2000 Duplex Crimp Type



ST Crimp Type



FC Crimp Type



SMA Crimp Type - Round Nut



SMA Crimp Type - Hexagonal Nut



MU



DIN



MT-RJ



## 2. Optical characteristics

Classification according to IEC 61753-1-1 (Grade)

Insertion Loss SM according to IEC 61300-3-34 random mated at 1310/1550/1625 nm

Return Loss according to IEC 61300-3-6 random mated at 1310/1550/1625 nm

Insertion Loss MM according to IEC 61300-3-34 random mated at 850/1300 nm

SM standard	IL	RL
PC	Grade C	Grade 2
UPC	Grade C	> 50 dB
APC	Grade C	Grade 1

MM standard	IL	RL
PC	Grade Bm	Grade 3m

SM option available	IL	RL
PC	< 0,25	Grade 2
PC	Grade B	Grade 2
UPC	< 0,25	> 50 dB
UPC	Grade B	> 50 dB
APC	< 0,25	Grade 1
APC	Grade B	Grade 1

**3. Cables available on stock:**

**Simplex LSZH**

	<b>9/125 G652.D</b>	<b>9/125 G655.E</b>	<b>9/125 G657.A1</b>	<b>9/125 G657.A2</b>	<b>50 OM2</b>	<b>50 OM3</b>	<b>50 OM4</b>	<b>62.5 OM1</b>
<b>1,6 mm Tight</b>	Yellow, Blue							
<b>1,8 mm Tight</b>			Yellow					
<b>2 mm Tight</b>	Yellow , Blue, Red, Orange	Yellow			Orange, Green	Aqua		Orange, Grey
<b>2 mm Loose</b>	Yellow, Blue		Blue	White				
<b>2,4 mm Tight</b>	Yellow							
<b>3 mm Tight</b>	Yellow							Orange
<b>3 mm Loose</b>	Yellow							

**Duplex LSZH**

	<b>9/125 G652.D</b>	<b>9/125 G655.E</b>	<b>9/125 G657.A1</b>	<b>9/125 G657.A2</b>	<b>50 OM2</b>	<b>50 OM3</b>	<b>50 OM4</b>	<b>62.5 OM1</b>
<b>1,6x3,2mm Tight</b>	Yellow, Blue				Green, Orange, Blue	Aqua	Aqua, Erika Violet	Orange, Grey
<b>1,8x3,6mm Tight</b>	Yellow							
<b>2x4 mm Tight</b>	Yellow, Blue, Red	Yellow			Orange			Orange
<b>2x4 mm Tight Metal Armoured</b>	Yellow				Grey			
<b>2x4 mm Loose</b>				White				
<b>2,5x5 mm Tight</b>					Orange, Grey	Aqua		Orange, Grey
<b>3x6 mm Tight</b>	Yellow, Blue					Aqua		

## Twin LSZH

	9/125 G652.D	9/125 G657.A1	9/125 G657.A2	50 OM2	50 OM3	50 OM4	62.5 OM1
2,6x4,3mm ID 1,6 mm Tight				Blue (Blue/Red)	Aqua (Aqua/Black)		Orange (Orange/Black)
2,5x4,5mm ID 2 mm Loose				White (Yellow/White)			
3x5 mm ID 2 mm Tight	Blue (Blue/Red)  Yellow (Yellow/Blue)			Orange (Orange/Black)  Green (Green/Black)	Aqua (Aqua/Black)	Erika Violet (Erika V./Black)	Orange (Orange/Black)

4. **Length Tolerance:** < 10 m : - 0 / +10 cm  
> 10 m : - 0 / +1%

5. **Inkjet marking:**

Patchcord marking information are : OPL MM/YY SERIAL NUMBER A (or B)

OPL Manufacturer identification  
MM/YY Month/Year  
Serial number Unique identification of the patchcord for traceability purposes  
A/B identification of each end of the patchcord

6. **Labelling and Packaging**

Single packaging transparent plastic bag with label and QR code.  
Customised labels are available on request.



7. **Safety regulation**

RoHS compliant - Directive 2002/95/EC, 2011/65/EC and 2015/863/EC  
REACH compliant - Restricted Substances List and Candidate List of Substances of Very High Concern

E N D O F S P E C I F I C A T I O N