

5XPAN1U

19" Patch panel 1U - 24 Ports - 5X range

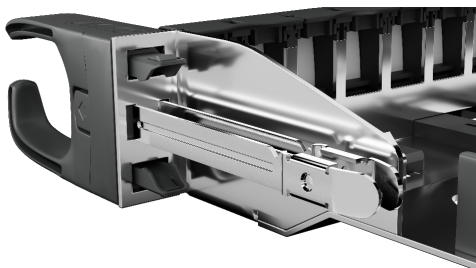
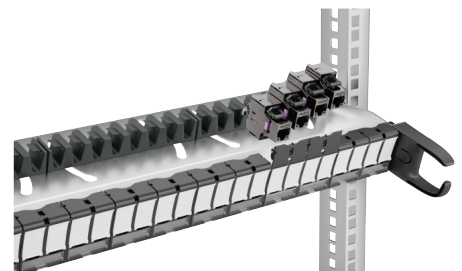
+ BENEFITS

- Ease of installation and maintenance with its innovative front-mounted connector system.
- Time saving: screwless mounting system.
- Rotating cable management system, fixing without cable tie.
- Label holder and interchangeable dust shutter



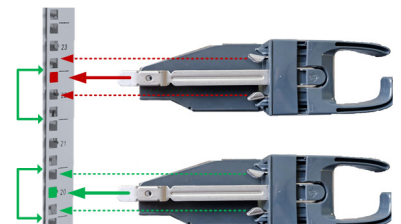
DESCRIPTION / APPLICATIONS

The 5th generation of MMC connectivity, the 5X range is designed to be high performance, quality, innovative, easy to use and modular. Revolutionary, the 5XPAN1U patch panel offers a unique experience: the RJ45 connectors can be mounted and removed from the front. Maintenance and connection of the panel are now easy.

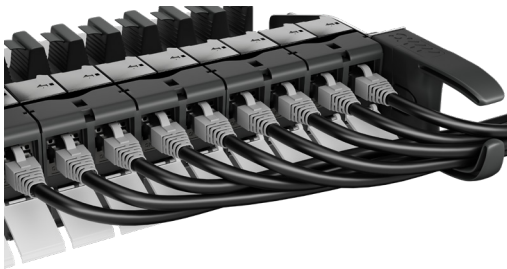


Screwless mounting system allows for quick and easy panel installation.

Its automatic fixing requires that the 'U' be positioned correctly on the 19" mounting.

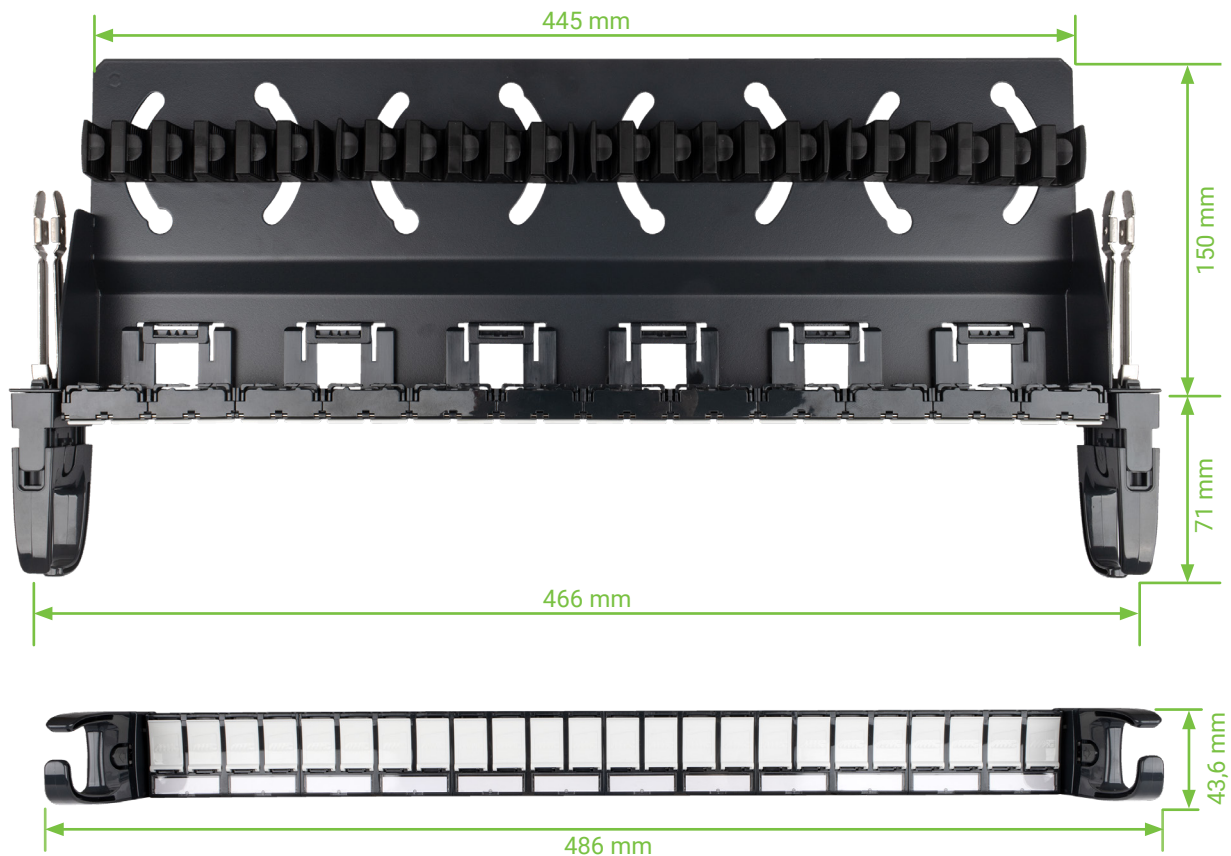


Rear section fitted with 4 independent, rotating cable management blocks for optimum management of cable bending radius. Cables fixing system without cable tie.



Cable guides on the front of the panel ensure quick and quick and easy installation during patching operations.

DIMENSIONS



TECHNICAL PROPERTIES

Materials	Pannel : Stainless steel Front face and Hooks: PC - UL 92-V2
Color	GREY RAL 7016

RELATED PRODUCTS

PART NUMBER	DESCRIPTION	PACKING
5X6AFS8	RJ45 CAT6A 360° shielded connector - 5X range	8
5X6AFS48	RJ45 CAT6A 360° shielded connector - 5X range	48
5X8FS8	RJ45 CAT8 360° shielded connector - 5X range	8

ORDERING INFORMATION

PART NUMBER	DESCRIPTION	PACKING
5XPAN1U	19" 24 port RJ45 patch panel - 5X range	Unit