



SERIES 1855 - MINIATURE DOUBLE-POLE ROCKER SWITCHES

TO 4 (1) A 250 V AC






PRODUCT FEATURES

- Illuminated rocker switches
- Different lamp variants
- Powerful with 50 000 mechanical switching cycles
- Caulked terminals for reliable plugging of the receptacles

ON REQUEST





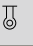



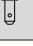









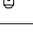
- Other colors
- Other printing variants
- Other terminal types
- Other lamp variants
- Cable assembly

| | |
|---|---|
| Mechanical life endurance | 5E4 |
| Contact resistance (new condition) | < 100 mOhm (1 A 12 V DC) |
| Insulation resistance (new condition) | > 100 MOhm (500 V DC) |
| Proof tracking | 250 PTI |
| Protection type | IP 40 |
| Ambient temperature | terminal side -20 °C ... +85 °C actuating side -20 °C ... +55 °C |
| Flammability | UL 94 V-2 |
| Glow wire test temperature | 850 °C |
| Material | actuator PA housing PA terminals silver plated |
| Plug force of the terminals | ≤ 80 N |
| Approval marks |  /  /  |
| Suitable for appliances of protection class II | |



SERIES 1855 - MINIATURE DOUBLE-POLE ROCKER SWITCHES

TO 4 (1) A 250 V AC

|  double-pole | Lighting voltage (V) | Actuator color / printing | Housing color | 4 (1) A 250 V AC 1E4 | | | Terminal type | Terminal description | Contact distance (mm) | Contact material | EN 60335 cap. 30 conform "G" | Stock version |
|--|----------------------|---|---------------|----------------------|----------------------|----------------------|---|----------------------|-----------------------|------------------|------------------------------|---------------|
| | | | | | 6 A 125 V AC 1/10 HP | 4 A 250 V AC 1/10 HP | | | | | | |
| ON / OFF switch (DPST) | | | | | | | | | | | | |
| 1855.0102 | 230 |  | | ○ | | ○ |  | | ≥ 3 | Ag | | ○ |
| 1855.0108 | 230 |  | | ○ | | ○ |  | | ≥ 3 | Ag | | ○ |
| 1855.1102 | 230 |  | | ○ | | ○ |  | 4.8 | ≥ 3 | Ag | | ○ |
| 1855.1104 | 230 |  | | ○ | | ○ |  | 4.8 | ≥ 3 | Ag | | ○ |
| 1855.1108 | 230 |  | | ○ | | ○ |  | 4.8 | ≥ 3 | Ag | | ○ |
| 1855.1115 | 230 |  | | ○ | | ○ |  | 4.8 | ≥ 3 | Ag | ○ | |
| 1855.1118 | 230 |  | | ○ | | ○ |  | 4.8 | ≥ 3 | Ag | ○ | |
| 1855.1122 | 110 |  | | | ○ | |  | 4.8 | ≥ 3 | Ag | | |
| 1855.1124 | 110 |  | | | ○ | |  | 4.8 | ≥ 3 | Ag | | |

ROCKERSWITCHES
 PUSHBUTTON SWITCHES
 TOGGLE SWITCHES
 SLIDE SWITCHES
 ROTARY SWITCHES
 FOOT SWITCHES
 TACT AND KEY SWITCHES
 SNAP-ACTION SWITCHES
 MICRO-SIGNAL SWITCHES
 SENSORS
 ECO
 PUSH N' DRIVE

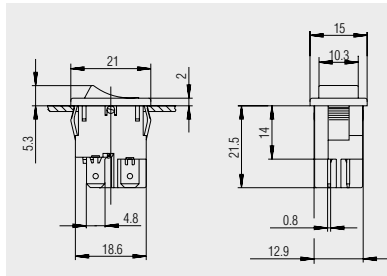


SERIES 1855 - MINIATURE DOUBLE-POLE ROCKER SWITCHES

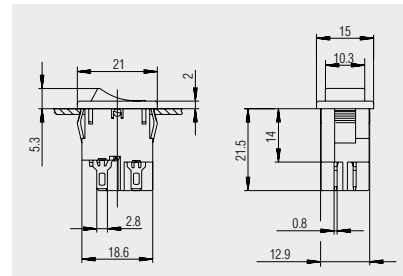
TO 4 (1) A 250 V AC




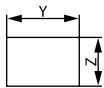
Basic type 1855



 Quick-connect terminal 4.8 x 0.8



 Solder terminal

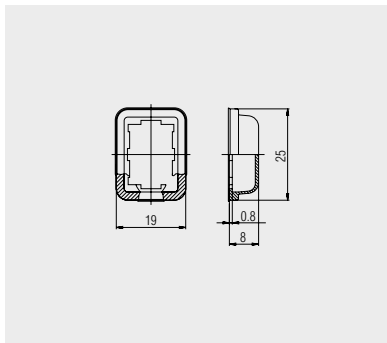


X = Wall thickness

| x | y | z |
|---------------|----------------------|----------------------|
| 0.75 ... 1.25 | 19.2 ^{-0.1} | 12.9 ^{+0.1} |
| 1.25 ... 2 | 19.4 ^{-0.1} | 12.9 ^{+0.1} |
| 2 ... 3 | 19.8 ^{-0.1} | 12.9 ^{+0.1} |



Protection cap
203.089.011



Transparent PVC-protection cap.
Serves as dust and water protection
for the actuating side.

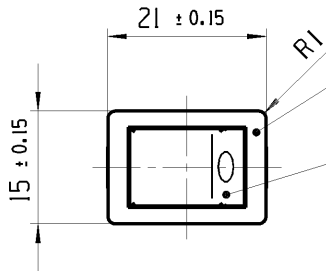
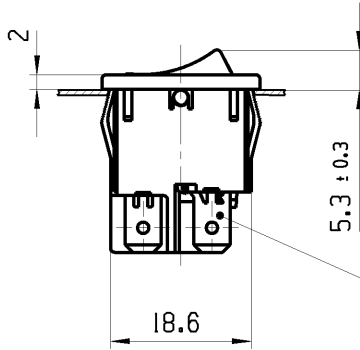
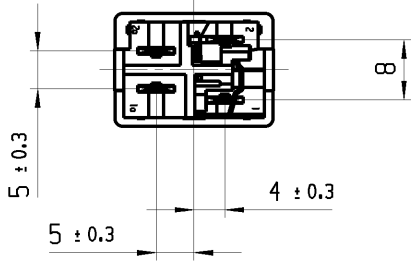
© THIS DRAWING IS THE EXCLUSIVE PROPERTY OF MARQUARDT. WITHOUT THEIR CONSENT IT MAY NOT BE REPRODUCED OR GIVEN TO THIRD PARTIES.

CONFIDENTIAL

VERTRAULICH

© Alle Rechte bei Marquardt, auch fuer den Fall von Schutzrechtsanmeldungen. Jede Verfuuegungsbefugnis, wie Kopier- und Weitergaberecht, bei uns.

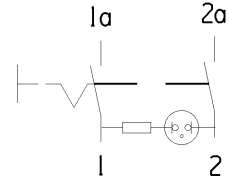
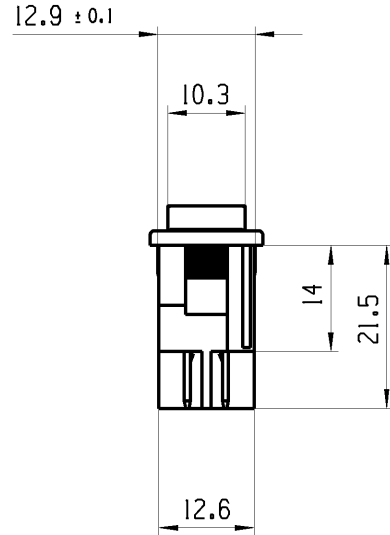
| | | | |
|--|---|--|--|
| 1 | 2 | 3 | 4 |
| Empfohlener Ausschnitt fuer Rastbefestigung (Grat gegeneuber Bestueckungsseite) recommended cut-out for snap-in fixing (ledge opposite to snap-in direction) | Wanddicke wall thickness | Ausschnittlaenge length of cut-out | Ausschnittbreite width of cut-out |
| | 0.75 to / bis 1.25 1.25 to / bis 2 2 to / bis 3 | 19.2 ^{-0.1} 19.4 ^{-0.1} 19.8 ^{-0.1} | 12.9 ^{+0.1} 12.9 ^{+0.1} 12.9 ^{+0.1} |



Flachstecker plug-in
DIN 46 244-A4.8-0.8

schwarz black

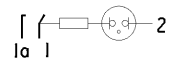
Wippen rot transp. Zeichen weiss rocker red transp. symbol white



Aufschrift Marking

1855.
4(1)250 ~ T85/55
05

4A 250V AC
1/10 HP
R69



Herstellort/-jahr/-monat nach code of manufacture place/year/month acc. to:
DIN EN 60062

Auf Verpackung / on box: G

Ausschalter 2-polig
Glimmlampe mit R_v fuer 230V ~
Fuer Gerate der Klasse II geeignet
G-Konform nach IEC 60335-1:2001 Kap.30

DSPT
neon lamp with R_v for 230V AC
suitable for appliances of class II
G-matching IEC 60335-1:2001 clause 30

| | | | | | | | | | | |
|---------------------------------------|--------------------|---|--|--------------------|---------------|----------------------------|------------------------|--|------------------------------|---------|
| fuer Form und Lage FOR SHAPE AND LOC. | ☉ = | Allgemeintoleranzen UNTOLERANCED DIMENSIONS | | | | Pause COPY | Blatt SHEET 01 | TYP K | Zeichn./DRAWING NO. 18551115 | Index d |
| fuer Winkel FOR ANGLE ± 2 | | PROJEKTION | Abmasse und Nennmassbereiche Angaben in mm | Laenge LENGTH | Radien RADIUS | Original Din A4 | Masstab SCALE 1:1 30mm | GERAETESCHALTER | | |
| | | | 0-6 ± 0.2 | ± | ± | | | appliance switch | | |
| | | | >6-15 ± 0.4 | ± | ± | | | | | |
| | | | >15-30 ± 0.4 | ± | ± | | | | | |
| | | | >30-70 ± | ± | ± | | | | | |
| | | | >70-120 ± | ± | ± | | | | | |
| | | | >120 ± | ± | ± | | | | | |
| c | 66876 | 20.01.10 | HHE | | | CAD: NX v6.0 | | | | |
| b | 63303 | 28.05.09 | HHE | | | gez./DRAWN BY 21.11.06 MUS | | | | |
| a | 49942 | 21.11.06 | MUS | | | gepr./CHECKED BY | | | | |
| | 49168 | 09.11.06 | HHE | d | 74134 | 27.07.11 | MUT | Ersatz fuer/REPLACEMENT OF Zg.gl.Nr.v.31.10.06 | | |
| Ausg. ISSUE | Aenderung REVISION | gez. DRAWN BY | Ausg. ISSUE | Aenderung REVISION | gez. DRAWN BY | MARQUARDT | | | | |