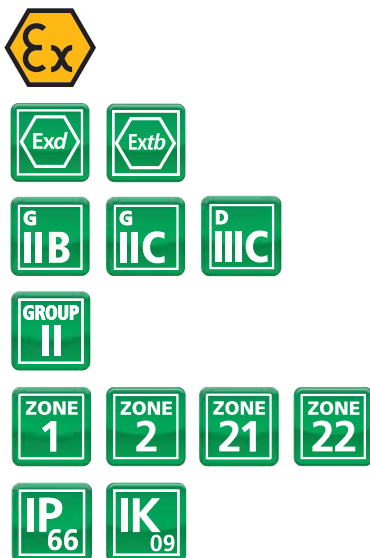




XFF Range Tubular fluorescent fitting



Approvals / Characteristics



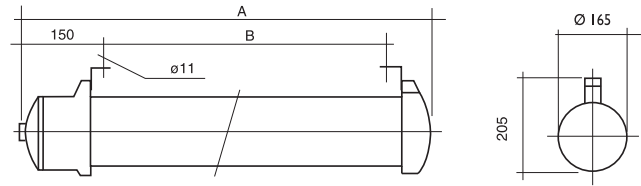
Features

- Manufactured from marine grade aluminium
- All components mounted on slide gear tray for easy installation and maintenance
- Standard components used inside body allowing reduced maintenance costs
- Available in Glass for paint shop and other spray applications for easy cleaning
- Including accessories, cable gland & fixing brackets

Certification & Standards

Approved to: EN60079-0, 60079-1, 60079-31
 EC TYPE Examination Certificate:
 INERIS 11 ATEX 0051X
 Ex II 2 G
 Ex d IIC T6 Gb for $\leq -20^{\circ}\text{C}$ to $\leq +55^{\circ}\text{C}$ (All Polycarbonate tubes)
 Ex d IIC T6 Gb for $\leq -20^{\circ}\text{C}$ to $\leq +55^{\circ}\text{C}$ (Glass tubes)
 Ex d IIB T6 Gb for $\leq -20^{\circ}\text{C}$ to $\leq +55^{\circ}\text{C}$ (Glass versions - XFR140, XFR165, XFF240 and XFF265)
 Ex II 2 D
 Ex tb IIIC T80°C Db IP66
 Glow wire test: 960°C EN60598-2-22
 Safe operating temperature range: -20°C to $+55^{\circ}\text{C}$

Dimensions



Technical Specifications

Type	Wiring Configuration	Rating (W)	Nominal Current (A)	Diffuser	Dimensions (mm)		Weight (kg)
					A	B	
XFR120-OG000	3 Wire	1 x 18	0.15	Polycarbonate	780	565	5.5
XFR136-OG000	3 Wire	1 x PL36	0.2	Polycarbonate	1385	1170	6
XFR140-OG000	3 Wire	1 x 36	0.2	Polycarbonate	1385	1170	9
XFR155-OG000	3 Wire	1 x PL55	0.25	Polycarbonate	1690	1475	6
XFR165-OG000	3 Wire	1 x 58	0.35	Polycarbonate	1690	1475	11
XFF220-OG000	3 Wire	2 x 18	0.3	Polycarbonate	780	565	6.5
XFF236-OG000	3 Wire	2 x PL36	0.4	Polycarbonate	1385	1170	6.5
XFF240-OG000	3 Wire	2 x 36	0.4	Polycarbonate	1385	1170	10
XFF255-OG000	3 Wire	2 x PL55	0.5	Polycarbonate	1690	1475	6.5
XFF265-OG000	3 Wire	2 x 58	0.5	Polycarbonate	1690	1475	12
XFR120V-OG000	3 Wire	1 x 18	0.15	Glass	780	565	7
XFR136V-OG000	3 Wire	1 x PL36	0.2	Glass	1385	1170	8
XFR140V-OG000	3 Wire	1 x 36	0.2	Glass	1385	1170	17
XFR155V-OG000	3 Wire	1 x PL55	0.25	Glass	1690	1475	8
XFR165V-OG000	3 Wire	1 x 58	0.35	Glass	1690	1475	17
XFF220V-OG000	3 Wire	2 x 18	0.3	Glass	780	565	8.5
XFF236V-OG000	3 Wire	2 x PL36	0.4	Glass	1385	1170	8.5
XFF240V-OG000	3 Wire	2 x 36	0.4	Glass	1385	1170	18
XFF255V-OG000	3 Wire	2 x PL55	0.5	Glass	1690	1475	8.5
XFF265V-OG000	3 Wire	2 x 58	0.5	Glass	1690	1475	20

Enclosure

End caps according to standard:
EN1706:EN AC-AISI12(Fe) DF or
EN AC-AISI10Mg(a) DF marine grade aluminium
Yellow polyurethane paint RAL 1003
IP66 / IP67 IEC60529 if installed to manufacturers
instructions

Fixing

Standard: D023 - 2 Zinc Plated Steel articulated
brackets for ceiling mounting

Rated voltages

Electronic ballast:
AC/DC 220V-240V, 50-60Hz
For other voltages contact Sales

Power factor

Superior to 0.98

Cable entries

Standard: Two entries 3/4" NPT included
One 3/4" zinc chromed steel plug and
One cable gland - 3/4" NPT Brass for non-armoured
cable, diameter 8-10.5mm

Terminal block (plug in terminal block)

Up to 10mm² (rigid wire), 6mm² (flexible wire)
Terminals supplied L, N, PE
Looping possible

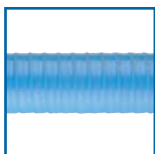
Lamps (order separately)

T8 bi-pin G13 tube, Ø 26 - white industry 4000°K
G11 compact fluorescent PL lamp

Other options

Stainless steel shock proof kit 304L
Enclosure: Offshore and other colours

Spares & Fixings Accessories see pages 94-99



EXL Conduit 140



Stopping Plugs 162



GUV Range 124



PA NPT Gland 150

Related Products