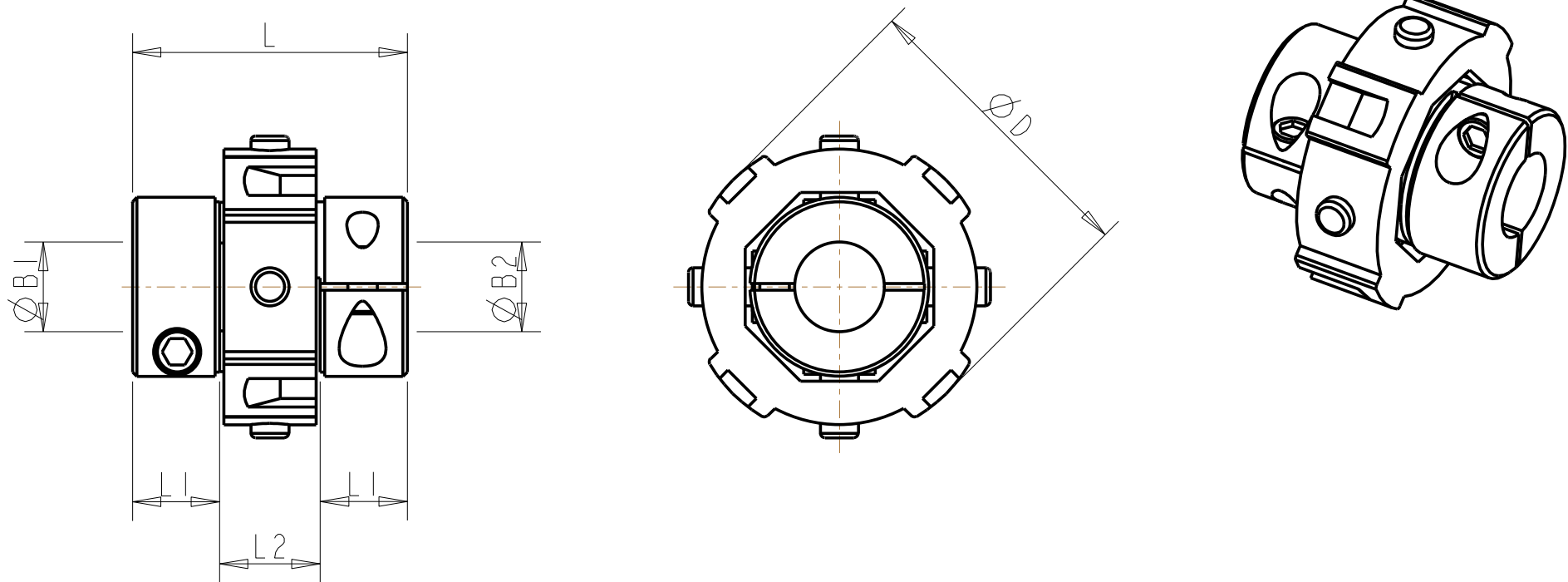


Universal/Lateral Offset Coupling with Clamp Style Fixing



All dimensions in mm

NOT TO SCALE

- 1. Length of supported thru' bore. Shafts must not penetrate beyond L1 when in operation
- 2. Nominal distance between shafts inserted into L1

Ref. No.	$\varnothing D$	L	L1 (1)	L2 (2)	$\varnothing B1, \varnothing B2$ Max	Screw
207.18	19.1	19.1	7	5.1	6.35	4-40
207.27	28	25.4	9.3	6.9	10	M3
206.34	33.7	30.7	10.9	8.9	10	4-40
205.41	41.4	38.1	13.5	11.2	12.7	M4