

ELR H5-I-PT- 24DC/500AC-9-P02 - Hybrid motor starter



1160740

<https://www.phoenixcontact.com/in/products/1160740>

Please be informed that the data shown in this PDF document is generated from our online catalog. Please find the complete data in the user documentation. Our general terms of use for downloads are valid.



Modular hybrid motor starter for starting and reversing motors incl. motor protection and rotary field monitoring, input: 24 V DC, output: 3~, 500 V AC, 9 A, connection method: Push-in connection

Product description

The modular 3-phase hybrid motor starter with reversing function and current monitoring provides the following functions: - Forward running - Reverse running - Motor overload protection Additional advantages are provided by using the DIN rail connector adapter (Item No. 2203861): - Power can also be supplied via the DIN rail connector by a system power supply (e. g., QUINT4-SYS...) or via the PCB connector IMC 1,5/ 5-ST-3,81, Item No. 1857919 - Optional relay module (e. g., EM-2RSC/21AU-R/L-P, Item No. 2908701) provides additional status information Thanks to the internal interlocking circuit and load wiring, wiring expense is reduced to a minimum.

Commercial data

Item number	1160740
Packing unit	1 pc
Minimum order quantity	1 pc
Note	Made to order (non-returnable)
Sales key	CK7
Product key	DK7424
GTIN	4063151168667
Weight per piece (including packing)	303.6 g
Weight per piece (excluding packing)	303.6 g
Customs tariff number	85371098
Country of origin	DE

ELR H5-I-PT- 24DC/500AC-9-P02 - Hybrid motor starter



1160740

<https://www.phoenixcontact.com/in/products/1160740>

Technical data

Product properties

Product type	Hybrid motor starters
Product family	CONTACTRON
Operating mode	100% operating factor

Electrical properties

Number of phases	3
Switching frequency	≤ 2 Hz (Load-dependent)
Switching frequency	≤ 2 Hz (Load-dependent)
Maximum power dissipation	7 W
Minimum power dissipation	0.88 W
Coordination type	1

Supply

Rated control circuit supply voltage U_S	24 V DC
Control supply voltage range	19.2 V DC ... 30 V DC
Rated control supply current I_S	60 mA
Protective circuit	Surge protection Reverse polarity protection; Parallel polarity protection diode

Insulation characteristics

Rated insulation voltage	550 V
Rated surge voltage	6 kV
Overvoltage category	III
Degree of pollution	2
Insulation characteristics between the control input and control supply voltage, and auxiliary circuit to the main circuit	Safe isolation (IEC 60947-1)
Isolation characteristics between the control input and control supply voltage to auxiliary circuit	Safe isolation (IEC 60947-1) in the auxiliary circuit ≤ 300 V AC Safe isolation (EN 50178) in the auxiliary circuit ≤ 300 V AC

Emergency tripping

Operate threshold	> 60 A
Response time	< 0.5 s

Input data

Control

Input name	Control input right/left
Rated actuating voltage U_C	24 V DC
Triggering voltage range	19.2 V DC ... 30 V DC
Rated actuating current I_C	7 mA
Switching threshold	9.6 V ("0" signal) 19.2 V ("1" signal)
Typical turn-off time	< 30 ms

ELR H5-I-PT- 24DC/500AC-9-P02 - Hybrid motor starter



1160740

<https://www.phoenixcontact.com/in/products/1160740>

Protective circuit	Reverse polarity protection
--------------------	-----------------------------

Output data

AC output

Rated operating voltage U_e	500 V AC
Operating voltage range	42 V AC ... 550 V AC
Rated operating current I_e	9 A (AC-51)
	7 A (AC-53a)
Mains frequency	50/60 Hz
Load current range	1.5 A ... 9 A
Trigger characteristic in acc. with IEC 60947-4-2	Class 10 (≤ 3 A)
	Class 10A (> 3 A)
Cooling time	20 min (for auto reset)
Leakage current	0 mA
Protective circuit	Surge protection; Varistor

Acknowledge output

Note	Confirmation: floating change-over contact, signal contact
Contact switching type	1 changeover contact
Switching capacity in accordance with IEC 60947-5-1	2 A (24 V (DC13))

Connection data

Control circuits

Connection method	Push-in connection
Stripping length	10 mm
Conductor cross section rigid	0.2 mm ² ... 2.5 mm ²
Conductor cross section flexible	0.2 mm ² ... 2.5 mm ²
Conductor cross section AWG	24 ... 14

Load circuit

Connection method	Push-in connection
Stripping length	10 mm
Conductor cross section rigid	0.2 mm ² ... 2.5 mm ²
Conductor cross section flexible	0.2 mm ² ... 2.5 mm ²
Conductor cross section AWG	24 ... 14

Signaling

Status display	LED (yellow)
Operating voltage display	Green LED
Error indication	Red LED

Dimensions

Width	22.5 mm
Height	107.5 mm

ELR H5-I-PT- 24DC/500AC-9-P02 - Hybrid motor starter



1160740

<https://www.phoenixcontact.com/in/products/1160740>

Depth	114 mm
-------	--------

Material specifications

Flammability rating according to UL 94	V0 (Housing)
--	--------------

Environmental and real-life conditions

Ambient conditions

Degree of protection	IP20
Ambient temperature (operation)	-25 °C ... 70 °C (observe derating)
Ambient temperature (storage/transport)	-40 °C ... 80 °C
Altitude	≤ 2000 m

Approvals

UKCA

Certificate	UKCA-compliant
-------------	----------------

UL data

Horsepower ratings	2 hp (208 V AC)
	2 hp (230 V AC)
	2 hp (240 V AC)
	5 hp (480 V AC)

Standards and regulations

Standards/regulations

Standards/regulations	EN 60947-1
	EN 60947-4-2

Mounting

Mounting type	DIN rail mounting
Assembly note	alignable, for spacing see derating
Mounting position	vertical (horizontal DIN rail, motor output below)

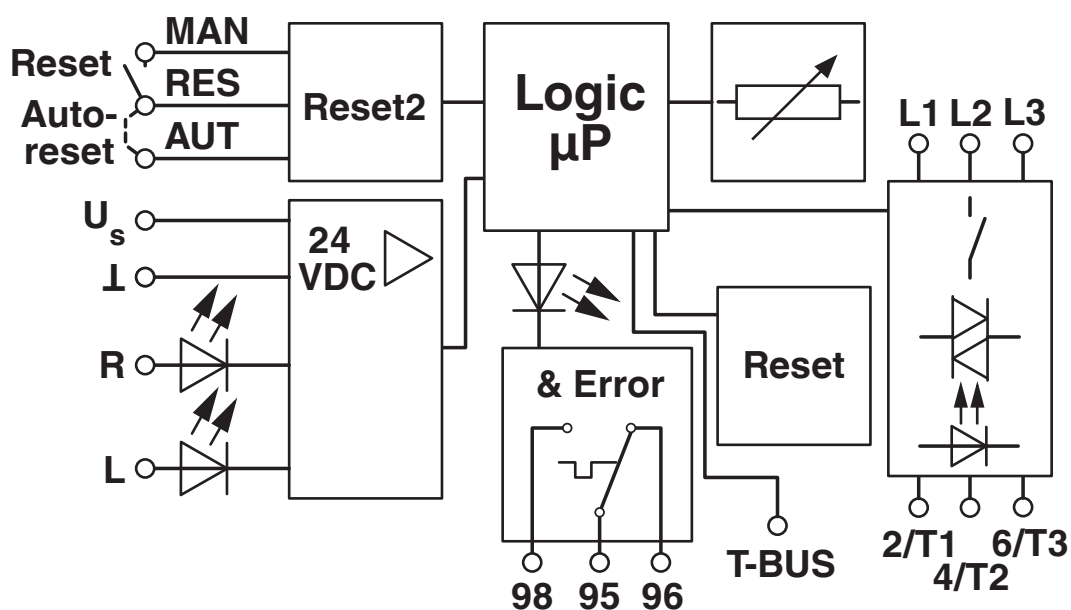
ELR H5-I-PT- 24DC/500AC-9-P02 - Hybrid motor starter

1160740

<https://www.phoenixcontact.com/in/products/1160740>

Drawings

Block diagram




ELR H5-I-PT- 24DC/500AC-9-P02 - Hybrid motor starter




1160740
<https://www.phoenixcontact.com/in/products/1160740>

Approvals


To download certificates, visit the product detail page: <https://www.phoenixcontact.com/in/products/1160740>




UL Listed
Approval ID: FILE E 172140



cUL Listed
Approval ID: FILE E 172140



cUL Listed
Approval ID: E228652



UL Listed
Approval ID: E228652

ELR H5-I-PT- 24DC/500AC-9-P02 - Hybrid motor starter



1160740
<https://www.phoenixcontact.com/in/products/1160740>

Classifications

ECLASS

ECLASS-11.0	27370905
ECLASS-13.0	27370905
ECLASS-12.0	27370905

ETIM

ETIM 9.0	EC001037
----------	----------

UNSPSC

UNSPSC 21.0	25173900
-------------	----------

ELR H5-I-PT- 24DC/500AC-9-P02 - Hybrid motor starter



1160740

<https://www.phoenixcontact.com/in/products/1160740>

Environmental product compliance

EU RoHS

Fulfills EU RoHS substance requirements	Yes
Exemption	7(a), 7(c)-I

China RoHS

Environment friendly use period (EFUP)	EFUP-50
	An article-related China RoHS declaration table can be found in the download area for the respective article under "Manufacturer declaration". For all articles with EFUP-E, no China RoHS declaration table issued and required.

EU REACH SVHC

REACH candidate substance (CAS No.)	Lead(CAS: 7439-92-1)
SCIP	fb1a1644-7e14-4732-bc87-4233f365184e

ELR H5-I-PT- 24DC/500AC-9-P02 - Hybrid motor starter



1160740

<https://www.phoenixcontact.com/in/products/1160740>

Accessories

BRIDGE-PT 1 - Bridge

1161777

<https://www.phoenixcontact.com/in/products/1161777>

3-phase loop bridge for 1 CONTACTRON module, with Push-in connection and 22.5 mm housing width, connecting cable: 3 m



BRIDGE-PT 2 - Bridge

2904490

<https://www.phoenixcontact.com/in/products/2904490>

3-phase loop bridge for 2 CONTACTRON modules, with Push-in connection and 22.5 mm housing width, connecting cable: 3 m



ELR H5-I-PT- 24DC/500AC-9-P02 - Hybrid motor starter



1160740

<https://www.phoenixcontact.com/in/products/1160740>

BRIDGE-PT 3 - Bridge

2904491

<https://www.phoenixcontact.com/in/products/2904491>

3-phase loop bridge for 3 CONTACTRON modules, with Push-in connection and 22.5 mm housing width, connecting cable: 3 m



BRIDGE-PT 4 - Bridge

2904492

<https://www.phoenixcontact.com/in/products/2904492>

3-phase loop bridge for 4 CONTACTRON modules, with Push-in connection and 22.5 mm housing width, connecting cable: 3 m



ELR H5-I-PT- 24DC/500AC-9-P02 - Hybrid motor starter



1160740

<https://www.phoenixcontact.com/in/products/1160740>

BRIDGE-PT 5 - Bridge

2904493

<https://www.phoenixcontact.com/in/products/2904493>

3-phase loop bridge for 5 CONTACTRON modules, with Push-in connection and 22.5 mm housing width, connecting cable: 3 m



BRIDGE-PT 6 - Bridge

2904494

<https://www.phoenixcontact.com/in/products/2904494>

3-phase loop bridge for 6 CONTACTRON modules, with Push-in connection and 22.5 mm housing width, connecting cable: 3 m



ELR H5-I-PT- 24DC/500AC-9-P02 - Hybrid motor starter



1160740

<https://www.phoenixcontact.com/in/products/1160740>

BRIDGE-PT 7 - Bridge

2904495

<https://www.phoenixcontact.com/in/products/2904495>

3-phase loop bridge for 7 CONTACTRON modules, with Push-in connection and 22.5 mm housing width, connecting cable: 3 m



BRIDGE-PT 8 - Bridge

2904496

<https://www.phoenixcontact.com/in/products/2904496>

3-phase loop bridge for 8 CONTACTRON modules, with Push-in connection and 22.5 mm housing width, connecting cable: 3 m



ELR H5-I-PT- 24DC/500AC-9-P02 - Hybrid motor starter



1160740

<https://www.phoenixcontact.com/in/products/1160740>

BRIDGE-PT 9 - Bridge

2904497

<https://www.phoenixcontact.com/in/products/2904497>

3-phase loop bridge for 9 CONTACTRON modules, with Push-in connection and 22.5 mm housing width, connecting cable: 3 m



BRIDGE-PT 10 - Bridge

2904498

<https://www.phoenixcontact.com/in/products/2904498>

3-phase loop bridge for 10 CONTACTRON modules, with Push-in connection and 22.5 mm housing width, connecting cable: 3 m



ELR H5-I-PT- 24DC/500AC-9-P02 - Hybrid motor starter



1160740

<https://www.phoenixcontact.com/in/products/1160740>

BRIDGE-PT 1-1M - Bridge

1161778

<https://www.phoenixcontact.com/in/products/1161778>

3-phase loop bridge for 1 CONTACTRON module, with Push-in connection and 22.5 mm housing width, connecting cable: 1 m



BRIDGE-PT-2-1M - Bridge

1049407

<https://www.phoenixcontact.com/in/products/1049407>

3-phase loop bridge for 2 CONTACTRON modules, with Push-in connection and 22.5 mm housing width, connecting cable: 1 m



ELR H5-I-PT- 24DC/500AC-9-P02 - Hybrid motor starter



1160740

<https://www.phoenixcontact.com/in/products/1160740>

BRIDGE-PT-3-1M - Bridge

1049408

<https://www.phoenixcontact.com/in/products/1049408>

3-phase loop bridge for 3 CONTACTRON modules, with Push-in connection and 22.5 mm housing width, connecting cable: 1 m



BRIDGE-PT-4-1M - Bridge

1049409

<https://www.phoenixcontact.com/in/products/1049409>

3-phase loop bridge for 4 CONTACTRON modules, with Push-in connection and 22.5 mm housing width, connecting cable: 1 m



ELR H5-I-PT- 24DC/500AC-9-P02 - Hybrid motor starter



1160740

<https://www.phoenixcontact.com/in/products/1160740>

BRIDGE-PT-5-1M - Bridge

1049413

<https://www.phoenixcontact.com/in/products/1049413>

3-phase loop bridge for 5 CONTACTRON modules, with Push-in connection and 22.5 mm housing width, connecting cable: 1 m



BRIDGE-PT-2-2M/0,3M - Bridge

1107649

<https://www.phoenixcontact.com/in/products/1107649>

3-phase loop bridge for 2 CONTACTRON modules, with Push-in connection and 22.5 mm housing width, cable length between the modules: 0.3 m, connecting cable: 2 m



ELR H5-I-PT- 24DC/500AC-9-P02 - Hybrid motor starter



1160740

<https://www.phoenixcontact.com/in/products/1160740>

BRIDGE-PT-3-2M/0,3M - Bridge

1107650

<https://www.phoenixcontact.com/in/products/1107650>



3-phase loop bridge for 3 CONTACTRON modules, with Push-in connection and 22.5 mm housing width, cable length between the modules: 0.3 m, connecting cable: 2 m

BRIDGE-PT-4-2M/0,3M - Bridge

1107644

<https://www.phoenixcontact.com/in/products/1107644>



3-phase loop bridge for 4 CONTACTRON modules, with Push-in connection and 22.5 mm housing width, cable length between the modules: 0.3 m, connecting cable: 2 m

ELR H5-I-PT- 24DC/500AC-9-P02 - Hybrid motor starter



1160740

<https://www.phoenixcontact.com/in/products/1160740>

US-EMLP (15X5) - Plastic label

0828790

<https://www.phoenixcontact.com/in/products/0828790>



Plastic label, Card, white, unlabeled, can be labeled with: BLUEMARK ID COLOR, BLUEMARK ID, THERMOMARK PRIME, THERMOMARK CARD 2.0, THERMOMARK CARD, mounting type: adhesive, Number of individual labels: 189, text field height: 5 mm, text field width: 15 mm

UC-EMLP (15X5) - Plastic label

0819301

<https://www.phoenixcontact.com/in/products/0819301>



Plastic label, Sheet, white, unlabeled, can be labeled with: BLUEMARK ID COLOR, BLUEMARK ID, BLUEMARK CLED, PLOTMARK, CMS-P1-PLOTTER, mounting type: adhesive, Number of individual labels: 10, text field height: 5 mm, text field width: 15 mm

ELR H5-I-PT- 24DC/500AC-9-P02 - Hybrid motor starter



1160740

<https://www.phoenixcontact.com/in/products/1160740>

ELR-TBUS-22,5-P - DIN rail bus connectors

2908702

<https://www.phoenixcontact.com/in/products/2908702>

Special DIN rail connector only suitable for CONTACTRON pro modular hybrid motor starters (ELR H...-P and EM-...-P). Pack contains 10 DIN rail connectors.



QUINT4-SYS-PS/1AC/24DC/2.5/SC - Power supply unit

2904614

<https://www.phoenixcontact.com/in/products/2904614>

Primary-switched power supply, QUINT POWER, screw connection, DIN rail mounting, supply of devices possible via the TBUS DIN rail connector, protective coating, input: single-phase, output: 24 V DC/2.5 A



ELR H5-I-PT- 24DC/500AC-9-P02 - Hybrid motor starter



1160740

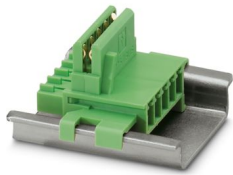
<https://www.phoenixcontact.com/in/products/1160740>

ME 17,5 TBUS 1,5/ 5-ST-3,81 GN - DIN rail bus connectors

2709561

<https://www.phoenixcontact.com/in/products/2709561>

DIN rail connector for DIN rail mounting. Universal for TBUS housing. Gold-plated contacts, 5-pos.



EM-2RSC/21AU-R/L-P - Extension module

2908701

<https://www.phoenixcontact.com/in/products/2908701>

Relay extension module for ELR-...-P hybrid motor starters, feedback of forward and reverse running when control signal is present, screw connection, DIN rail connector included



ELR H5-I-PT- 24DC/500AC-9-P02 - Hybrid motor starter



1160740

<https://www.phoenixcontact.com/in/products/1160740>

EM-2RPT/21AU-R/L-P - Extension module

2909573

<https://www.phoenixcontact.com/in/products/2909573>



Relay extension module for ELR-...-P hybrid motor starters, feedback of forward and reverse running when control signal is present, Push-in connection, DIN rail connector included

PSR-MC38-2NO-1DO-24DC-SC - Safety relays

1009831

<https://www.phoenixcontact.com/in/products/1009831>



Safety relay for emergency stop, safety doors and light grids up to SIL 3, Cat. 4, PL e, 1- or 2-channel operation, automatic or manual, monitored start, 2 enabling current paths, 1 signal output, TBUS interface, $U_S = 24\text{ V DC}$, pluggable screw terminal block

ELR H5-I-PT- 24DC/500AC-9-P02 - Hybrid motor starter



1160740

<https://www.phoenixcontact.com/in/products/1160740>

PSR-MC38-2NO-1DO-24DC-PI - Safety relays

1009832

<https://www.phoenixcontact.com/in/products/1009832>



Safety relay for emergency stop, safety doors and light grids up to SIL 3, Cat. 4, PL e, 1- or 2-channel operation, automatic or manual, monitored start, 2 enabling current paths, 1 signal output, TBUS interface, $U_S = 24\text{ V DC}$, pluggable push-in terminal

PSR-TBUS - DIN rail bus connectors

2890425

<https://www.phoenixcontact.com/in/products/2890425>



DIN rail connector for safety switching devices, for supplying/controlling/monitoring (depending on the module)

ELR H5-I-PT- 24DC/500AC-9-P02 - Hybrid motor starter



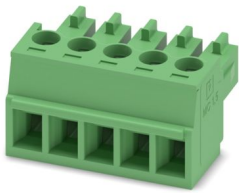
1160740

<https://www.phoenixcontact.com/in/products/1160740>

MC 1,5/ 5-ST-3,81 - PCB connector

1803604

<https://www.phoenixcontact.com/in/products/1803604>



PCB connector, nominal cross section: 1.5 mm², color: green, nominal current: 8 A, rated voltage (III/2): 160 V, contact surface: Sn, contact connection type: Socket, number of potentials: 5, number of rows: 1, number of positions: 5, number of connections: 5, product range: MC 1,5/...-ST, pitch: 3.81 mm, connection method: Screw connection with tension sleeve, screw head form: L Slotted, conductor/PCB connection direction: 0 °, plug-in system: COMBICON MC 1,5, locking: without, mounting method: without, type of packaging: packed in cardboard

IMC 1,5/ 5-ST-3,81 - PCB connector

1857919

<https://www.phoenixcontact.com/in/products/1857919>



PCB connector, nominal cross section: 1.5 mm², color: green, nominal current: 8 A, rated voltage (III/2): 160 V, contact surface: Sn, contact connection type: Pin, number of potentials: 5, number of rows: 1, number of positions: 5, number of connections: 5, product range: IMC 1,5/...-ST, pitch: 3.81 mm, connection method: Screw connection with tension sleeve, screw head form: L Slotted, conductor/PCB connection direction: 0 °, plug-in system: COMBICON MC 1,5, locking: without, mounting method: without, type of packaging: packed in cardboard

Phoenix Contact 2025 © - all rights reserved

<https://www.phoenixcontact.com>

PHOENIX CONTACT (I) Pvt. Ltd.

A-58/2, Okhla Industrial Area, Phase - II, New Delhi-110 020

+91.1275.71420

info@phoenixcontact.co.in