

Rex - digital time switches

AlphaRex DY64



NEW



A41 163

Reference

AlphaRex DY64
annual time switch, 4 channels

A41 163 120/230 V, 50/60 Hz
A41 164 24 V, AC/DC

Accessories

A40 125 Data key for DY64 (NOT identical to A40 107!)
A40 126 Replacement battery

⊕ According to UL 60730-1, UL 60730-2-7, VDE 631-1 and 631-2-7, IEC 60 730-1 and 60 730-2-7, EN 60 730-1 and 60 730-2-7

- with text based programming concept
- selectable languages: English, German, French, Italian, Spanish and Dutch
- fast programming due to selection of pre-set groups of days Mo-Su, Mo-Fr, Sa-Su and individual selection of days
- easy programming with PC using Rex software and data key
- a program consists of an ON and OFF time and their assignment to certain days
- backup on data key possible
- 84 programs per channel possible:
 - 28 weekly/astronomical programs
 - 28 yearly programs
 - 28 exceptional programs
- shortest possible program: 1sec
- background lighting for display and buttons
- running reserve of 5 years for date and time
- programs are stored in a EEPROM
- programs are shown as a weekly matrix on the display
- automatic summer-/wintertime change (daylight saving)
- precision +/- 0.2 sec/day or according to frequency
- manual override switches (ON/OFF/AUTO) for every channel on the front of switch
- manual switching
- lead sealable cover, even with inserted data key
- calculation of sunrise and sunset by programming date, time and local coordinates.
- no light sensor needed!
- the switching ON and OFF times (astro function) can be adjusted asymmetrically for +/- 120 minutes.
- the control input enables the activation of the time switch irrespective to the program. (only for channel 1)
- possible to create a cyclical repetitive program. (only for channel 1)

The AlphaRex DY64 offers 3 different types of programming: Weekly Program

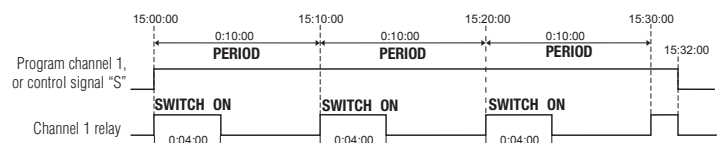
This menu item is provided for the simple input of programs which are to be repeated weekly (such as switching of lights and boilers). A weekly program consists of an ON time, an OFF time and the associated ON and OFF days.

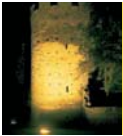
- **MON TO SUN:** the days of the week are already assigned and you only need to set the ON and OFF times. This is used where the same program is to be executed on every day of the week.
- **INDIVIDUAL:** you can assign the ON and OFF times to any desired days. This is used where the same program is to be executed only on certain days of the week or different programs are to be executed on the various days.

Yearly Program

This menu item permits the input of (additional) annual programs which are to be executed only during a specified period. These programs and the weekly programs of the same channel are programmed together as described above. The period during which a program is to be executed is defined by entering a start date and an end date.

- The option **EVERY YEAR** should be selected if the additional program is to be executed during the same period of each year (e.g. Christmas, national holidays, birthdays, etc.).
- The option **ONCE** should be selected if the additional program is to be executed only during a single period (e.g. vacation period), but the start and end dates of this period are different in each year.





Rex - digital time switches

AlphaRex DY64

Exceptional Program

The weekly and annual programs defined for a channel are not executed as long as an extra program is active. However, other exception programs will be executed while an exception program is active. The various exception programs are programmed together as described above. (see OR function 3a)

- The option EVERY YEAR should be selected if the exception program is to be activated for the same period in each year (e.g. Christmas, national holidays, birthdays, etc.).
- The option ONCE should be selected if the exception program is to be activated only during a single period (e.g. vacation period), but the start and end dates of this period are different in each year.
- Option MON TO SUN: the exception program is active from 00:00 hours on the start date to 24:00 hours on the end date. During this period, the output of the related channel switches only as defined in the exception program.
- Option INDIVIDUAL: the exception program is active from 00:00 hours on the start date to 24:00 hours on the end date. During this period, the output of the related channel switches only as defined in the exception program.
- Option PROG ON: the exception program is active from the ON time on the start date to OFF time on the end date. During this period, the output of the channel is permanently on.
- Option PROG OFF: the exception program is active from the ON time on the start date to OFF time on the end date. During this period, the output of the channel is permanently off.

Cycle function for channel 1

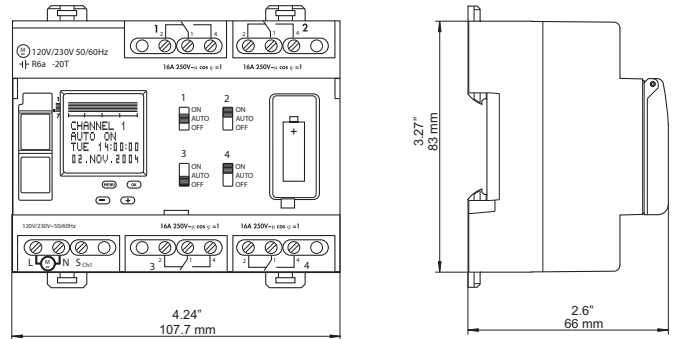
Instead of its STANDARD function, the output of channel 1 can be switched on and off cyclically. The available parameters are the PERIOD and the SWITCH ON time within this period.

Technical data

Type	AlphaRex DY64
No. of pitch units of 17.5 mm	6
Number of channels	4
Power reserve	5 years
Switching increment	1 sec
Shortest switching time	1 sec
Accuracy	0.2 sec/day/ or frequency
Switching capacity	
• Resistive 230 V~cos φ=1	16 A~
• Incandescent lamp 230 V	8 A~
• Inductive 230 V~cos φ=0.6	10 A~
Switch output	4 SPDT
Programs ¹⁾	3 x 4 x 28 (336)
Control input with delay-time	0 min – 23 h 59 min
Operating temperature	20 °C.....+55 °C
Protection	IP20

¹⁾ Each program comprises a switch-on and switch-off time and the associated on and off days or day blocks.

Dimensions



Wiring diagram

