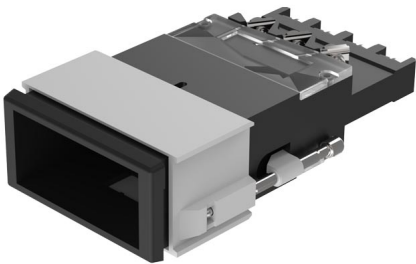


EAO – Your Expert Partner for Human Machine Interfaces

03-616.011 - Illuminated pushbutton actuator single-headed

03-616.011 - Illuminated pushbutton actuator single-headed



Attention: The preview is based on a sample product. This can differ from your current configuration.

Mounting

Mounting cut-out
Design 21,2 mm x 41,2 mm
flush

Front

Front dimension 24 mm x 48 mm
Front bezel colour black
Front bezel material Plastic
Front shape rectangular

Other Attributes

Weight 0,070 kg

Operating-/Indication part

Lens illumination illuminative

IP-Rating

Front protection IP40

Connection Method

Terminal Screw terminal

Actuator

Switching action Momentary
Housing colour black
Housing material Plastic

Switching element

Switching system Snap-action switching element
Contacts 1 C
Switching voltage 400 V AC
Switching current 10 A
Contact material Silver

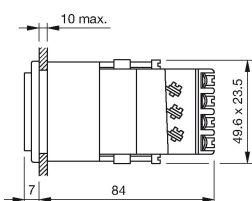
Function

Illuminated pushbutton

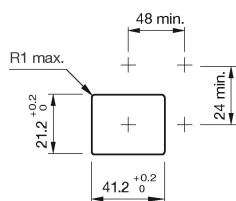
EAO – Your Expert Partner for Human Machine Interfaces

03-616.011 - Illuminated pushbutton actuator single-headed

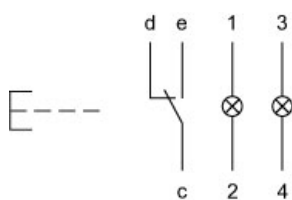
Dimensions



Mounting cut-outs



Wiring diagram



Additional information

Has two independent lamp bases
Light barrier ordered separately

Legend

Contacts: C = Changeover
Switching action: B = Momentary