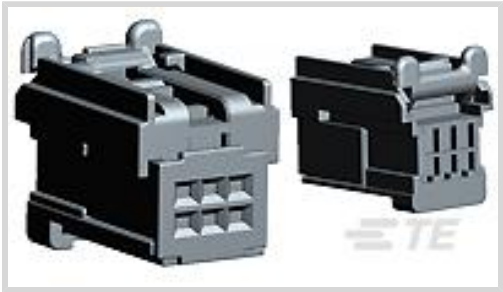




Connectors > Automotive Connectors > Automotive Housings > GET .64 CONNECTOR SYSTEM, CONNECTOR HSG



Number of Positions: 6

Connector & Housing Type: **Housing for Female Terminals**

Mating Tab Width: .64 mm [.025 in]

Connector System: **Wire-to-Board, Wire-to-Wire**

Centerline (Pitch): 2.54 mm [.1 in]

[All GET .64 Connector System, Connector HSG \(62\)](#)

Features

Product Type Features

Mixed & Hybrid Connector	No
Connector Shape	Rectangular
Connector & Housing Type	Housing for Female Terminals
Connector System	Wire-to-Board, Wire-to-Wire
Sealable	No
Primary Locking Feature	Integrated in Housing
Connector & Contact Terminates To	Wire & Cable

Configuration Features

Number of Positions	6
Number of Rows	2

Electrical Characteristics

Operating Voltage	14 VDC
-------------------	--------

Body Features

Cable Exit Angle	180°
Primary Product Color	Black
Connector & Keying Code	A



Contact Features

Contact Size	.64mm
Contact Type	Receptacle
Mating Tab Width	.64 mm[.025 in]

Mechanical Attachment

Strain Relief	Without
Terminal Position Assurance	Yes
Mating Alignment Type	Keyed
Mating Alignment	With
Connector Mounting Type	Cable Mount (Free-Hanging)

Housing Features

Housing Material	PA GF
Centerline (Pitch)	2.54 mm[.1 in]

Dimensions

Product Width	20.22 mm[.796 in]
Product Length	13.47 mm[.53 in]
Connector Height	17.75 mm[.699 in]

Usage Conditions

Operating Temperature (Max)	125 °C[257 °F]
Operating Temperature Range	-40 – 125 °C[-40 – 257 °F]

Operation/Application

Circuit Application	Signal
---------------------	--------

Packaging Features

Packaging Quantity	3003
--------------------	------

Other

Serviceable	Yes
Connector Position Assurance Capable	Yes

Product Compliance

For compliance documentation, visit the product page on TE.com>

EU RoHS Directive 2011/65/EU	Compliant
EU ELV Directive 2000/53/EC	Compliant



China RoHS 2 Directive MIIT Order No 32, 2016	No Restricted Materials Above Threshold
EU REACH Regulation (EC) No. 1907/2006	Current ECHA Candidate List: JAN 2025 (247) Candidate List Declared Against: JAN 2025 (247) Does not contain REACH SVHC
Halogen Content	BFR/CFR/PVC Free, but Br/Cl >900 ppm in other sources.
Solder Process Capability	Not applicable for solder process capability

Product Compliance Disclaimer

This information is provided based on reasonable inquiry of our suppliers and represents our current actual knowledge based on the information they provided. This information is subject to change. The part numbers that TE has identified as EU RoHS compliant have a maximum concentration of 0.1% by weight in homogenous materials for lead, hexavalent chromium, mercury, PBB, PBDE, DBP, BBP, DEHP, DIBP, and 0.01% for cadmium, or qualify for an exemption to these limits as defined in the Annexes of Directive 2011/65/EU (RoHS2). Finished electrical and electronic equipment products will be CE marked as required by Directive 2011/65/EU. Components may not be CE marked. Additionally, the part numbers that TE has identified as EU ELV compliant have a maximum concentration of 0.1% by weight in homogenous materials for lead, hexavalent chromium, and mercury, and 0.01% for cadmium, or qualify for an exemption to these limits as defined in the Annexes of Directive 2000/53/EC (ELV). Regarding the REACH Regulation, the information TE provides on SVHC in articles for this part number is based on the latest European Chemicals Agency (ECHA) 'Guidance on requirements for substances in articles' posted at this URL: <https://echa.europa.eu/guidance-documents/guidance-on-reach>

Compatible Parts

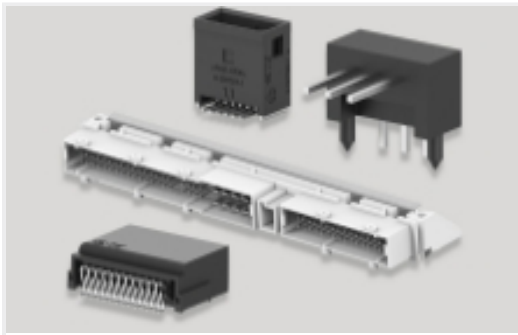
TE Part # CAT-G3353-CH8172
GET .64 CONNECTOR SYSTEM,
CONNECTOR HSG

Also in the Series | Get .64 Connector System

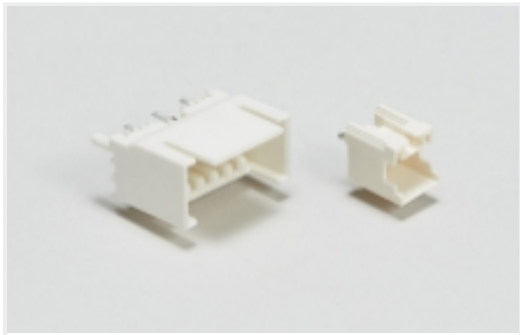
Automotive Connector Caps & Covers (5)	Automotive Headers(3)	Automotive Housings(87)	Automotive Terminals(28)



Insertion & Extraction Tools(1)



PCB Headers & Receptacles(3)

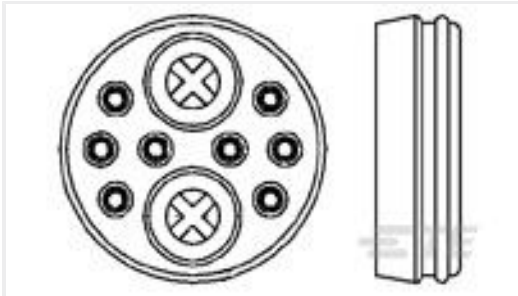


Wire-to-Board Headers & Receptacles (3)

Customers Also Bought



TE Part #1241388-1
AMP MCP 2.8K, CONTACT



TE Part #213900-1
CPC SEAL ASSY KIT, SRS 6,17-10



TE Part #1-1418463-9
2POS MQS REC SEALED COD A



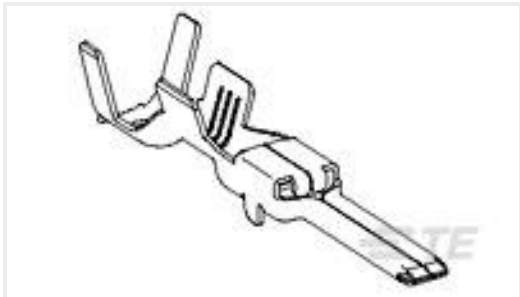
TE Part #1801823-1
4POS, MCON 0.5 CB, REC HSG, BLACK, ASSY, SLD



TE Part #2138558-3
2P G-Y Cap, Single-Piece, No Clip, A



TE Part #2138557-1
2P GENERATION Y Plug, Single-P



TE Part #1-1326031-0
2.8MM BLD, SEAL, 14AWG, REV REEL



TE Part #1452303-2
INL:R.BUM.MAL HSG12



TE Part #1452299-1
FEM HSG INLI.ASY12P



TE Part #9-1411325-5
2X3 POS GET-FEMALE CONNECTOR U

Documents

Product Drawings
MARKT2X3SWIT CONN.B

English

CAD Files
Customer View Model
ENG_CVM_CVM_1419158-5_D.2d_dxf.zip

English

3D PDF



3D

Customer View Model

[ENG_CVM_CVM_1419158-5_D.3d_igs.zip](#)

English

Customer View Model

[ENG_CVM_CVM_1419158-5_D.3d_stp.zip](#)

English

By downloading the CAD file I accept and agree to the [Terms and Conditions](#) of use.

Datasheets & Catalog Pages

[GET 0.64 Interconnection System](#)

English

Instruction Sheets

[Instruction Sheet \(U.S.\)](#)

English

[Instruction Sheet \(U.S.\)](#)

English