

8

7

6

5

4

3

2

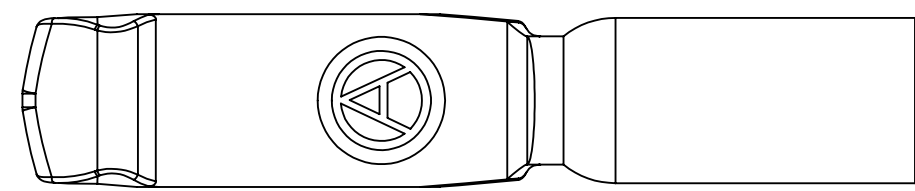
1

THE INFORMATION CONTAINED IN THIS DRAWING IS THE SOLE PROPERTY OF ANDERSON POWER PRODUCTS. ANY REPRODUCTION IN PART OR WHOLE WITHOUT THE WRITTEN PERMISSION OF ANDERSON POWER PRODUCTS IS PROHIBITED.

Copyright 2011

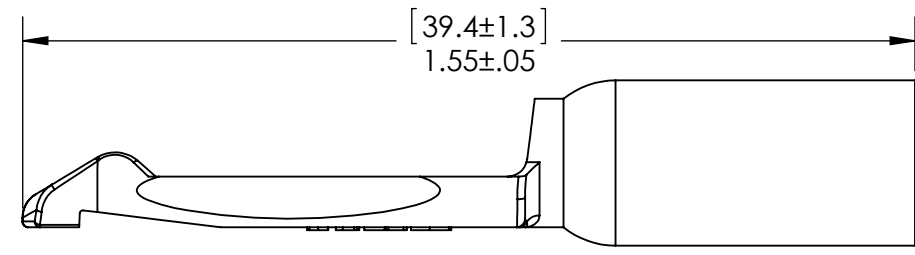
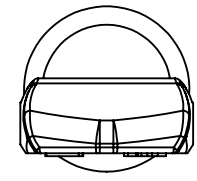
ANDERSON POWER PRODUCTS RESERVES THE RIGHT TO ALTER PRODUCT TYPES, THEIR TECHNICAL DATA, DIMENSION, STYLE AND ACCESSORIES WITHOUT PRIOR NOTIFICATION.

E



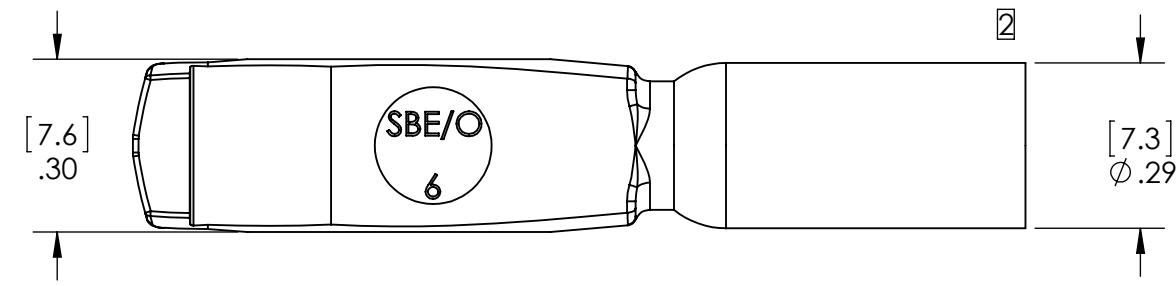
E

D

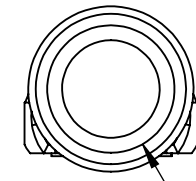
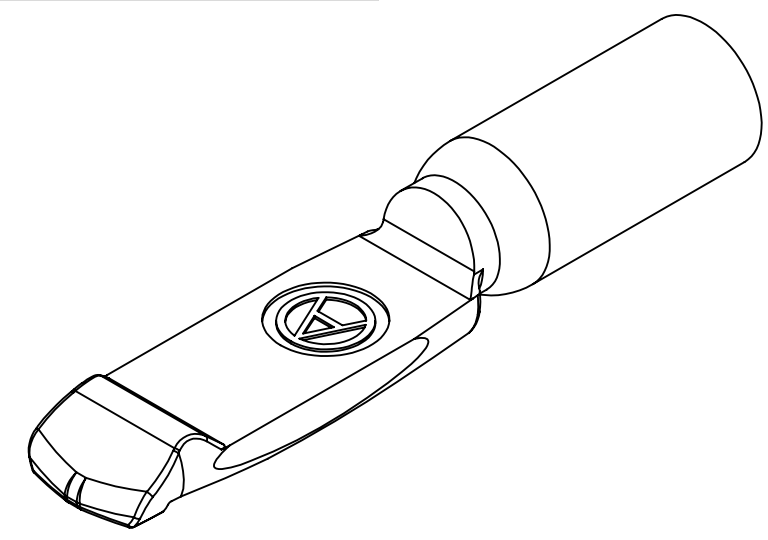


D

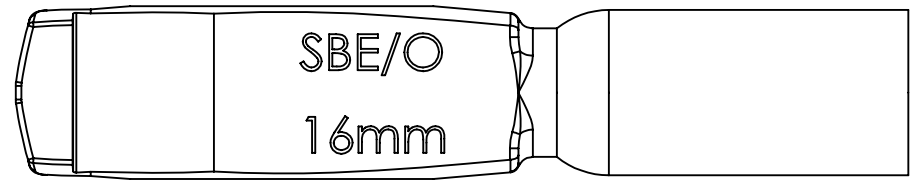
C



C



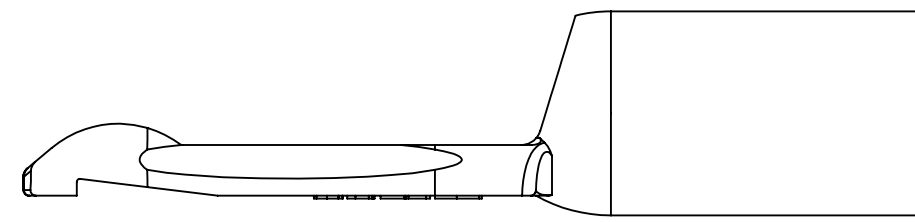
Ø A ∇ .49 [12.4]



ALTERNATE MARKING

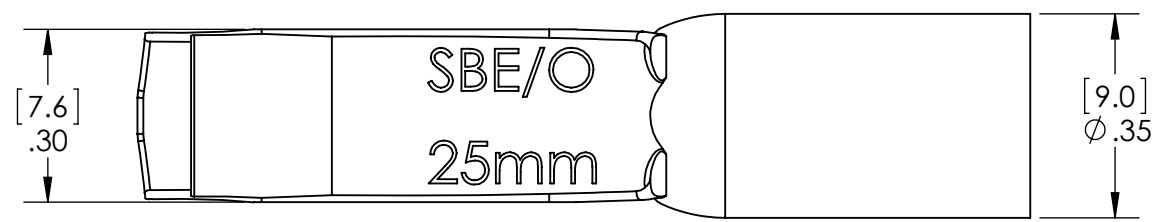
B

1339G4 ALTERNATE VIEWS



B

A



A

CAT. NO.	DETENT	WIRE GAGE	øA
1339G1	HIGH	6 AWG[16MM]	ø.22[5.7]
1339G4	LOW	25MM	ø.28[7.6]

NOTE:
1. 1339G1 SHOWN EXCEPT AS NOTED

DIMENSIONS ARE IN:	INCH [MM]	APPROVALS	
UNLESS OTHERWISE STATED		DRAWN	CMS 6/7/2001
TOLERANCES:		CHECKED	DJD 6/7/2001
DECIMALS (INCH)	DECIMALS (MM)	MFG APPRV	CHB 6/7/2001
.XX ± .02	.X ± .5	QC APPRV	UFN 6/11/2001
ANGLES	±2°	ENG APPRV	RPO 6/11/2001
SURFACE FINISH:		SIZE	DWG NO.
MACHINED	64 [1.6] ✓	B	B01853S1
MOLDED	32 [0.8] ✓	SCALE	CADFILE
MATERIAL: COPPER		NONE	01455
FINISH: SILVER PLATE		SHEET	1 OF 1

ANDERSON POWER PRODUCTS

TITLE: **OUTLINE: 1339G SERIES CONTACTS FOR SBE80/SB060**

REV. 2

DO NOT MANUALLY UPDATE
DO NOT SCALE

REV.	DESCRIPTION	APPRV	DATE
2	ECRN-15240	TWE	9/21/2012
1	ECRN-15034	NTS	1/5/12

REVISIONS

8

7

6

5

4

3

2

1