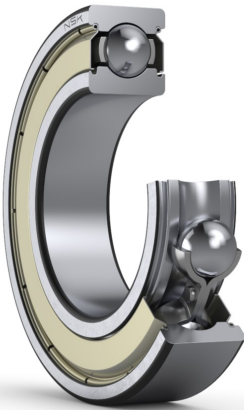




6010ZZ

Single-Row Deep Groove Ball Bearings



Boundary Dimensions

d	50	mm	Bore diameter
D	80	mm	Outside diameter
B	16	mm	Width
r (min.)	1	mm	Chamfer dimension

Basic Load Ratings

Cr	24000	N	Basic dynamic load rating
C0r	16600	N	Basic static load rating

Speeds

Grease	9500	min-1	Grease lubrication
--------	------	-------	--------------------

Abutment and Fillet Dimensions

da (min.)	55	mm	Diameter of shaft abutment
da (max.)	58.5	mm	Diameter of shaft abutment
Da (max.)	75	mm	Diameter of housing abutment
ra (max.)	1	mm	Radius of shaft or housing fillet

Calculation factors

fo	15.6		Factor
----	------	--	--------

Additional information

z	14		Number of Balls
Dw	8.731	mm	Ball Diameter

Mass

Mass approx.	0.261	kg	Mass approx.
--------------	-------	----	--------------

