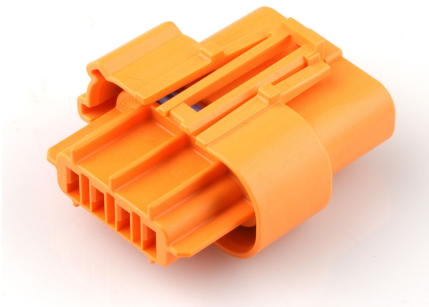




**Part Number :** [2077820613](#)  
**Product Description :** Squba 3.6 Sealed  
Receptacle Assembly, 3.60mm Pitch, 3  
Circuits, Single Row, Glow-Wire Capable, Key  
F, Orange, UL1015/UL1230 Compatible  
**Series Number :** 207782  
**Status :** Active  
**Product Category :** Connector Housings



## Documents & Resources


**Drawings**  
[2077820613\\_sd.pdf](#)  
[2077820000-PK-000.pdf](#)

**3D Models and Design Files**  
[2077820613\\_stp.zip](#)

**Specifications**  
[2077760000-AS-000.pdf](#)  
[2077760000-PS-000.pdf](#)  
[2077760000-TS-000.pdf](#)

## Product Environment Compliance

### Compliance

|                    |   |
|--------------------|---|
| GADSL/IMDS         | Not Relevant  |
| China RoHS         |  |
| EU ELV             | Not Relevant  |
| Low-Halogen Status | Not Low-Halogen per IEC 61249-2-21  |
| REACH SVHC         | Not Contained per D(2024)6225-DC (07 Nov 2024)  |
| EU RoHS            | Compliant per EU 2015/863   |

Multiple Part Product Compliance Statements  
- Eu RoHS  
- REACH SVHC  
- Low-Halogen

## Multiple Part Industry Compliance Documents

- IPC 1752A Class C
- IPC 1752A Class D
- Molex Product Compliance Declaration
- IEC-62474
- chemSHERPA (xml)

## EU RoHS Certificate of Compliance

---

### Part Details

#### General

|              |  |
|--------------|--|
| Status       | Active   |
| Category     | Connector Housings   |
| Series       | 207782   |
| Description  | Squba 3.6 Sealed Receptacle Assembly, 3.60mm Pitch, 3 Circuits, Single Row, Glow-Wire Capable, Key F, Orange, UL1015/UL1230 Compatible |
| Application  | Power, Signal, Wire-to-Wire  |
| Product Name | Squba  |
| UPC          | 196823172205   |

#### Agency

|    |        |
|----|--------|
| UL | E29179 |
|----|--------|

#### Physical

|                       |            |
|-----------------------|------------|
| Circuits (maximum)    | 3          |
| Color - Resin         | Orange     |
| Flammability          | 94V-0      |
| Gender                | Receptacle |
| Glow-Wire Capable     | Yes        |
| Keying to Mating Part | None       |
| Lock to Mating Part   | Yes        |
| Material - Resin      | Nylon      |
| Net Weight            | 4.042/g    |
| Number of Rows        | 1          |
| Packaging Type        | Tray       |

|                               |                |
|-------------------------------|----------------|
| Panel Mount                   | No             |
| Pitch - Mating Interface      | 3.60mm         |
| Pitch - Termination Interface | 3.60mm         |
| Polarized to Mating Part      | Yes            |
| Temperature Range - Operating | -40° to +105°C |

---

## Mates With / Use With

### Mates with Part(s)

| Description   | Part Number       |
|---|-------------------|
| Squba 3.6 Sealed Plug Assembly, 3.60mm Pitch, 3 Circuits, Single Row, Glow-Wire Capable, Key F, Orange, UL1015/UL1230 Compatible                | <u>2077780613</u> |
| Squba 3.6 Sealed Plug Assembly, 3.60mm Pitch, 3 Circuits, Single Row, Glow-Wire Capable, with Clipslot, Key F, Orange, UL1015/UL1230 Compatible | <u>2077781613</u> |

### Use with Part(s)

| Description   | Part Number       |
|---|-------------------|
| Squba 3.6 Receptacle Terminal, Matte Tin Plating, UL1015/UL1230 Compatible, 20-18 AWG, Reel | <u>2077770003</u> |