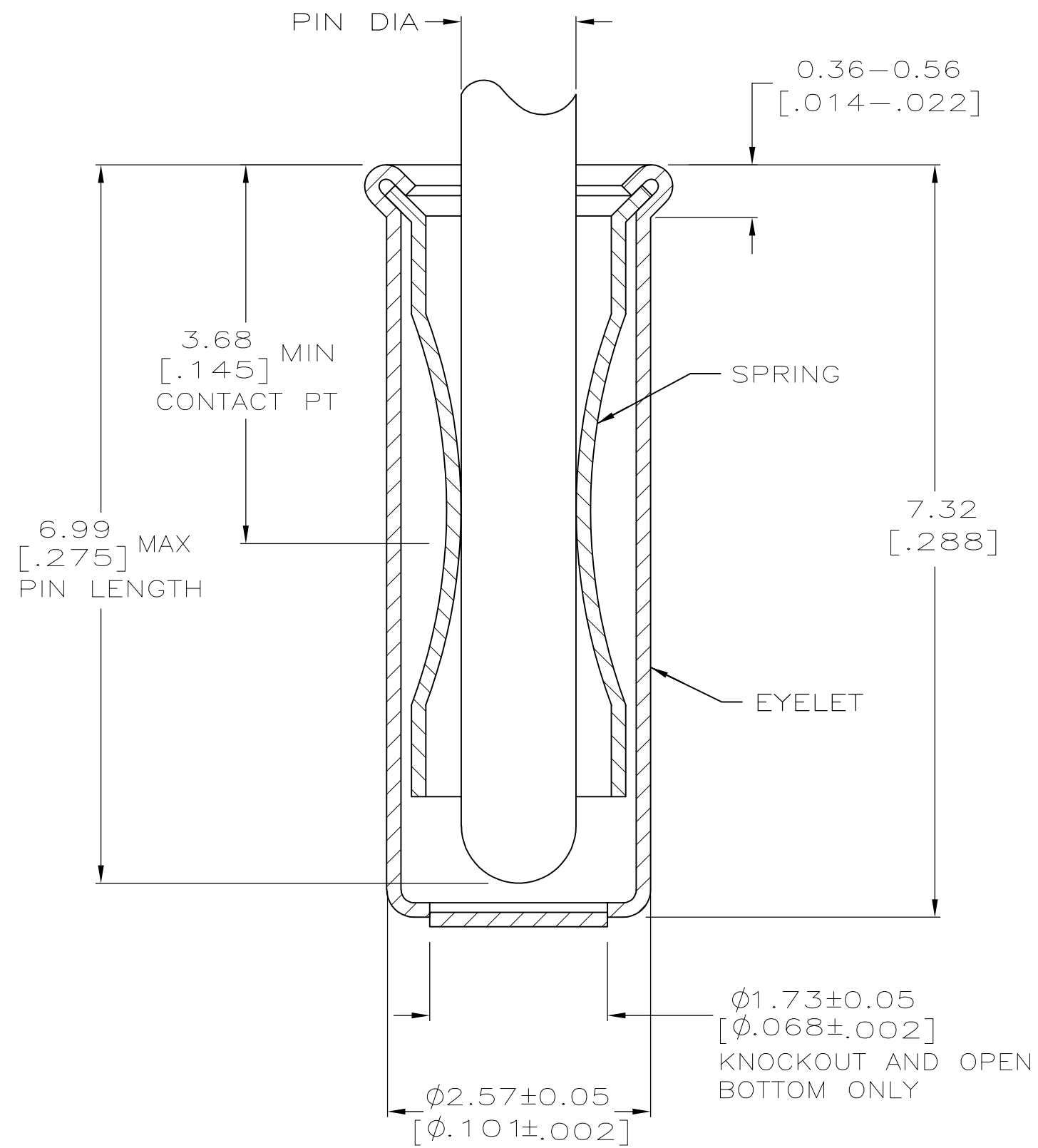
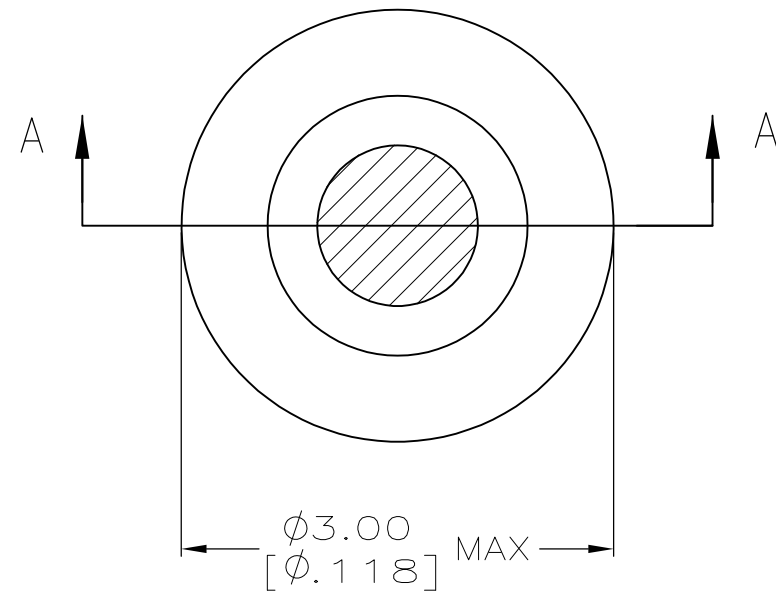


THIS DRAWING IS UNPUBLISHED. RELEASED FOR PUBLICATION
 © COPYRIGHT BY TYCO ELECTRONICS CORPORATION. ALL RIGHTS RESERVED.

LOC		DIST		REVISIONS 11-11-94 RT			
P	LTR	DESCRIPTION	DATE	DWN	APVD		
	A	REVISED PER EC-0511-0086-05.	26SEP2005	JGH	JGH		
	A1	REVISED PER ECO-10-000444	19JAN2010	KK	HMR		



SECTION A-A

- ① TIN PLATE PER ASTM B 545 .0.00254 [.000100] MIN THICK.
- ② GOLD PER ASTM B 488, 0.00076 [.000030] MIN THICK OVER NICKEL PLATE PER QQ-N-290 0.00028 [.000011] MIN THICK ON CONTACT AREA.
- 3. RECOMMENDED HOLE SIZE, PLATED OR UNPLATED:
 MACHINE INSERTION: 2.56±0.08 [.101±.003]
 HAND INSERTION: 2.62^{+0.10}_{-0.00} [.103^{+0.004}_{-.000}]
- 4. APPLICATION TOOL PART NUMBER:
 MACHINE NO. 682127-6
 INSERTION HEAD NO. 682039-5
- ⑤ TO INSURE PROPER SPRING TENSION DO NOT EXCEED A 0.05 [.002] DIFFERENCE IN PIN DIA WHEN CHANGING TO A SMALLER PIN.
- 6. BOTTOM PLUG KNOCKOUT TOOL PART NUMBER 69729 WITH TIP PART NUMBER 69728-3.
- ⑦ MATERIAL: SPRING: BERYLLIUM COPPER PER ASTM B 194
 EYELET: COPPER PER ASTM B 152
- ⑧ OBSOLETE PARTS: OBSOLETE CIS STREAMLINING PER D.RENAUD/D.SINISI

FINISH	RECOMMENDED PIN DIA	EYELET	SPRING	PART NO
TIN ①	OPEN			2-5050871-4
	CLOSED			2-5050871-3
	KNOCKOUT			2-5050871-1
	OPEN	TIN ①		1-5050871-9
	CLOSED			1-5050871-0
	OPEN			5050871-8
	CLOSED			5050871-6
	OPEN			5050871-5
	CLOSED			5050871-1
	OPEN			5050871-1

⑧ OBSOLETE

THIS DRAWING IS A CONTROLLED DOCUMENT.		DWN J. ALCORTA - DOCK5 20APR2005	Tyco Electronics Corporation Harrisburg, PA 17105-3608	
DIMENSIONS: mm [INCHES]		CHK J. HAVENER 20APR2005	NAME MINIATURE SPRING SOCKET ASSEMBLY SERIES 5	
TOLERANCES UNLESS OTHERWISE SPECIFIED: 0 PLC ± - 1 PLC ± - 2 PLC ± - 3 PLC ± 0.20 [.008] 4 PLC ± - ANGLES ± -		APVD J. HAVENER 20APR2005	PRODUCT SPEC	
MATERIAL ⑦		FINISH SEE TABLE	WEIGHT -	RESTRICTED TO
CUSTOMER DRAWING		SCALE 20:1	SHEET 1 OF 1	REV A1