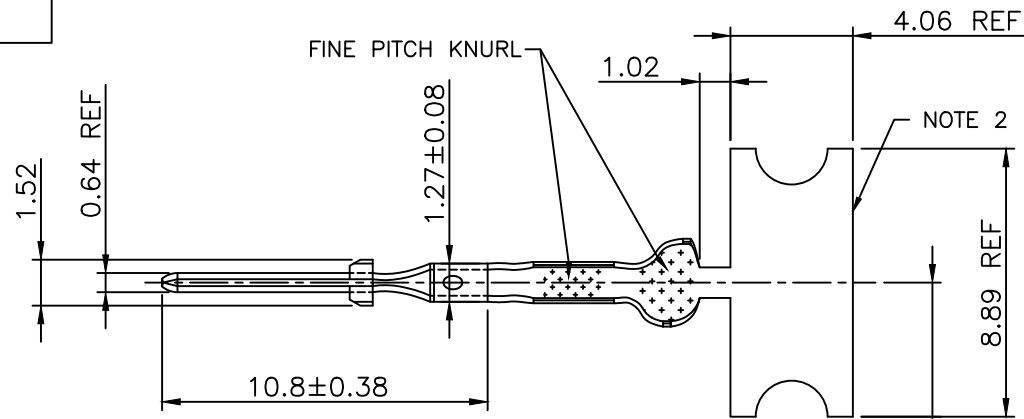


PRODUCT NUMBER

SEE SHEET 2

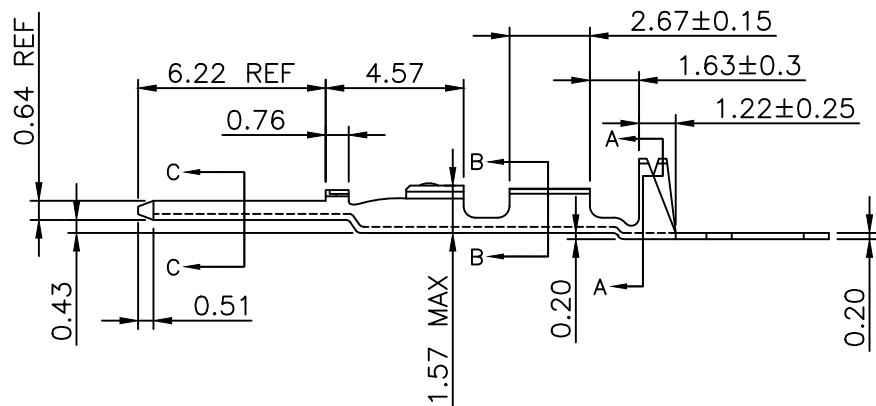
EXTENDED RANGE

- TOOLING FEASIBILITY CONFIRMED
- SAMPLES ON DEMAND
- AVAILABILITY ON DEMAND



NOTES:

- 1 - PLATING: 2.54µm Sn MINIMUM PRE-PLATED
- 2 - FOR MANUFACTURING PURPOSES ONLY.
- 3 - PART MAY BE USED WITH MINI-LATCH HSG.
- 4 - APPLICABLE SPECIFICATIONS:
A. BUS-12-098: PRODUCT SPECIFICATION
B. TA-211: CRIMP SPECIFICATION
- 5 - PART NUMBERS WITH AN LF SUFFIX MEET EUROPEAN UNION DIRECTIVES AND OTHER COUNTRY REGULATIONS AS DESCRIBED IN GS-22-008.
- 6 - THIS PRODUCT IS NOT INTENDED TO BE EXPOSED TO MANUFACTURING SOLDER PROCESSES.
- 7 - THIS PRODUCT HAS 100% TIN PLATING IN THE INTERFACE AND HAS NOT BEEN TESTED FOR WHISKER GROWTH IN ALL INTERCONNECT ENVIRONMENTS.
- 8 - PACKAGING QUANTITY: 8000 PER REEL
- 9 - THIS PART SERIES IS NOT INITIALLY INTENDED FOR AUTOMOTIVE APPLICATIONS. ADDITIONAL FEES ARE CHARGEABLE FOR ANY ADDITIONAL QUALIFICATION AND TEST REPORTS PERFORMED OUTSIDE THE SCOPE OF THE STANDARD PRODUCT SPECIFICATIONS.
- 10 - UNLESS OTHERWISE APPROVED BY AMPHENOL, ALL PARTS AND COMPONENTS ARE DESIGNED & BUILT ACCORDING TO AMPHENOL'S SPECIFICATIONS WHICH ARE SUBJECT TO CHANGE WITHOUT NOTICE.



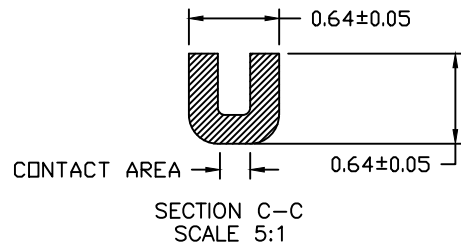
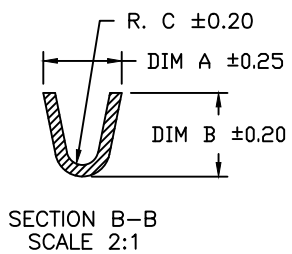
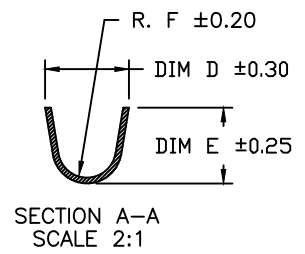
mat'l. code SEE NOTES				surface ISO 1302	tolerance ISO 406 ISO 1101	projection	product family PV TERMINAL
Ltr	ecn no	dr	date	tolerances unless otherwise specified		mm	title CTW MALE PIN
L	F-54570	DDE	25.02.10	angles	.x ±0.3		
				linear	.xx ±0.13		
F	V04-0056	VS	2004.02.17	σ±2'	.xxx ±0.05	scale 3:1	
G	V05-0467	HTB	2005.05.23	dr	S.ROYER	94.11.30	dwg no
H	V06-0623	HTB	2006.06.28	engr	T.HANNA	94.11.30	sheet 1 of 2
J	V07-0218	HTB	2007.03.16	chr	T.HANNA	94.11.30	size A3
K	V08-044Q	HTB	2008.10.09	appd	T.HANNA	94.11.30	type CUSTOMER Drawing
sheet	revision	L	L				
index	sheet	1	2				

Amphenol FCI FCIconnect.com

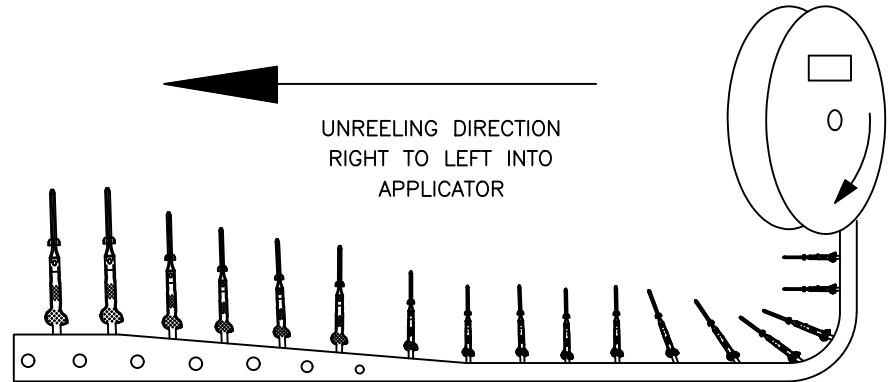
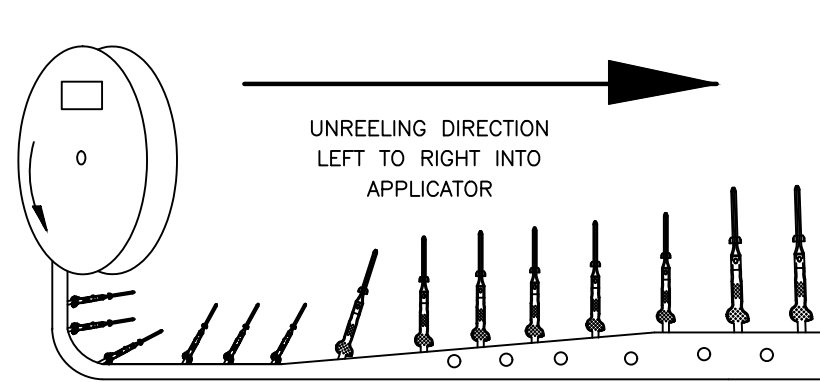
Copyright FCI

PRODUCT NO. AS REELED FOR APPLICATION MACHINES NOTE 5		WIRE AWG	WIRE BARREL			INSULATION BARREL		
RIGHT TO LEFT FEED	LEFT TO RIGHT FEED		A	B	C	D	E	F
75653-001LF	75653-004LF	28-32	1.37	1.47	0.28	2.92	2.67	1.02
75653-002LF	75653-005LF	22-26	1.78	1.65	0.43	3.53	3.05	1.27
75653-003LF	75653-006LF	18-20	2.64	2.64	0.53	3.53	3.05	1.27

NOTE 7
NOTE 7
NOTE 7



Amphenol
FCI
FCIconnect.com



Copyright FCI

mat'l. code SEE NOTES				surface ISO 1302 ✓	tolerance ISO 406 ISO 1101	projection mm	product family PV TERMINAL		
ltr	ecn no	dr	date	tolerances unless otherwise specified		mm	title CTW MALE PIN		
K				angles	linear		scale 3:1	dwg no	
L	F-54570	DDE	25.02.10	σ±2'	.x ±0.3 .xx ±0.13 .xxx ±0.05	Amphenol FCI		sheet 2 of 2	
				dr	S.ROYER 94.11.30		75653		A3
				enr	T.HANNA 94.11.30		type		
				chr	T.HANNA 94.11.30		CUSTOMER		Drawing
				appd	T.HANNA 94.11.30				
sheet index	revision sheet								