



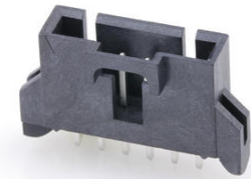
**Part Number :** [1719720006](#)

**Product Description :** 2.54mm Pitch SL Header, Single Row, Vertical, LCP, Shrouded, Through Hole, with Pegs, Matte Tin (Sn) Plating, 6 Circuits

**Series Number :** 171972

**Status :** Active

**Product Category :** PCB Headers and Receptacles



---

## Documents & Resources

### Drawings

[1719720006\\_sd.pdf](#)

[1719710000-PK-000.pdf](#)

### 3D Models and Design Files

[STEP AP242](#)

[SOLIDWORKS](#)

[Creo](#)

[Symbol and Footprint \(Multi-Format\)](#)

### Specifications


[1719710000-PS-000.pdf](#)

[PS-70400-001.pdf](#)

---

## Product Environment Compliance

### Compliance

GADSL/IMDS	Compliant with Exemption 44; 33
China RoHS	 per SJ/T 11365-2006
EU ELV	Not Relevant
Low-Halogen Status	Low-Halogen per IEC 61249-2-21
REACH SVHC	Not Contained per D(2025)4165-DC (25 June 2025)
EU RoHS	Compliant per EU 2015/863

[Compliance Statements](#)

- EU RoHS
- REACH SVHC
- Low-Halogen

#### Industry Documents

- IPC 1752A Class C
- IPC 1752A Class D
- Molex Product Compliance Declaration
- IEC-62474
- chemSHERPA (xml)

#### Substances of Interest

- PFAS

#### EU RoHS Certificate of Compliance

#### Additional Product Compliance Information

## Part Details

### General

Status	Active
Category	PCB Headers and Receptacles
Series	171972
Description	2.54mm Pitch SL Header, Single Row, Vertical, LCP, Shrouded, Through Hole, with Pegs, Matte Tin (Sn) Plating, 6 Circuits
Application	Signal, Wire-to-Board
Component Type	PCB Header
Product Name	SL
UPC	889056787369

### Electrical

Current - Maximum per Contact	3.0A
Voltage - Maximum	250V

### Physical

Breakaway	No
Circuits (Loaded)	6
Circuits (maximum)	6
Color - Resin	Black

First Mate / Last Break	No
Glow-Wire Capable	No
Guide to Mating Part	Yes
Keying to Mating Part	None
Lock to Mating Part	Yes
Material - Metal	Brass
Material - Plating Mating	Matte Tin
Material - Plating Termination	Matte Tin
Material - Resin	Liquid Crystal Polymer
Net Weight	1.316/g
Number of Rows	1
Orientation	Vertical
Packaging Type	Tube
PCB Locator	Yes
PCB Retention	Yes
PCB Thickness - Recommended	1.57mm
PC Tail Length	3.30mm
Pitch - Mating Interface	2.54mm
Pitch - Termination Interface	2.54mm
Plating min - Mating	2.540µm
Plating min - Termination	2.540µm
Polarized to Mating Part	Yes
Polarized to PCB	Yes
Shrouded	Fully
Temperature Range - Operating	-40° to +105°C
Termination Interface Style	Through Hole

---

## Mates With / Use With

### Mates with Part(s)

Description	Part Number
SL Single Row Female Insulation Displacement Connector Assemblies	<u>70400</u>
SL Single Row Crimp Housings and CPA Retainers	<u>70066</u>

