



## ETIM specifications

Socket	G12
Lamp power [W]	35
Colour temperature [K]	3000
Luminous flux [lm]	3500
Lamp voltage [V]	85 - 85
UV protection	Yes
Colour rendering index CRI	80-89
Colour of light according to EN 12464-1	Warm white < 3300 K
Lamp efficacy [lm/W]	100
Lamp shape	Tube, single-ended
Material discharge tube	Ceramics
Burning position	Random
Diameter [mm]	20
Total length [mm]	100
External ignitor required	Yes
External ballast required	Yes
Closed luminaire required	Yes
Sun tanning lamp	No
Colour	Colourless
Colour of light	830
Model	Clear
Lamp designation	Other
Weighted energy consumption in 1000 hours [kWh]	41
Average nominal lifetime [h]	10000
Energy efficiency class according to EU regulation 2019/2015	F

## Alternative articles

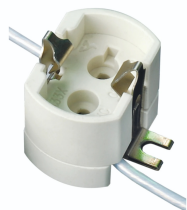


HMC035830T/01

146245

MASTERC CDM-T 35W/830 G12 LED HID G12 DIM 14W (35W)  
1800lm 830 AC 230V

## Complementary articles



92600036349  
Lampholder G12 4A 750V  
T300°C 300mm



142634  
HID-AV C 35-70 / I CDM 220-  
240V 50/60Hz