

SETRON, Switch disconnecter 3LD, emergency switching-off switch, 3- pole, Iu: 32 A, operating power / at AC-23 A 400 V: 11.5 kW, floor mounting with door coupling, rotary operating mechanism, Red / yellow, central mounting 22.5 mm of the handle



Model	
product brand name	SETRON
product designation	3LD Switch disconnecter
design of the product	EMERGENCY-STOP switch
display version / for switch position indicator manual operation	1 ON - 0 OFF
design of the operating mechanism	Short rotary knob
design of handle	rotary operating mechanism, red/yellow
type of the driving mechanism / motor drive	No

General technical data	
number of poles	3
type of device	fixed mounting
type of switch	Floor mounting with door coupling
size of switch disconnecter	2
mechanical service life (switching cycles)	
• typical	100 000
electrical endurance (switching cycles)	
• at AC-23 A / at 690 V	6 000

I2t value / with closed switch / at 690 V / for combination switch + gG fuse / maximum	9 kA2.s
let-through I2t value / with closed switch / at 440 V / for combination switch + gG fuse / maximum	9 kA2.s
operating frequency / maximum	50 1/h

Voltage

insulation voltage / rated value	690 V
surge voltage resistance / rated value	6 kV
operating current / at AC / rated value	32 A
operating voltage <ul style="list-style-type: none"> at AC / at 50/60 Hz / rated value 	690 V

Protection class

protection class IP	IP65
degree of protection NEMA rating	1, 3R, 4X, 12
protection class IP / on the front	IP65

Dissipation

power loss [W] <ul style="list-style-type: none"> for rated value of the current / at AC / in hot operating state / per pole per conductor / typical 	1.8 W 1.8 W
--	----------------

Current

operating current <ul style="list-style-type: none"> at AC-23 A / at 690 V / rated value at AC-23 A / at 400 V / rated value at AC-22 A / at 690 V / rated value at AC-21 / at 690 V / rated value at AC-21 A / at 240 V / rated value at AC-21 A / at 440 V / rated value at AC-22 A / at 240 V / rated value at AC-22 A / at 440 V / rated value at AC-23 A / at 240 V / rated value at AC-23 A / at 440 V / rated value 	13 A 22 A 32 A 32 A 32 A 32 A 32 A 32 A 22 A 22 A
operating current / of upstream fuse / rated value	40 A
let-through current / with closed switch <ul style="list-style-type: none"> at 440 V / for combination switch + gG fuse / maximum at 690 V / for combination switch + gG fuse / maximum permissible 	4.5 kA 4.5 kA
short-time withstand current (Icw) <ul style="list-style-type: none"> limited to 1 s / rated value at 690 V / limited to 1 s / rated value 	640 A 640 A

Main circuit	
operating frequency	
<ul style="list-style-type: none"> initial value 	50 Hz
<ul style="list-style-type: none"> full-scale value 	60 Hz
operating power	
<ul style="list-style-type: none"> at AC-23 A / at 240 V / rated value 	6 kW
<ul style="list-style-type: none"> at AC-23 A / at 400 V / at 50/60 Hz / rated value 	11.5 kW
<ul style="list-style-type: none"> at AC-23 A / at 400 V / rated value 	11.5 kW
<ul style="list-style-type: none"> at AC-23 A / at 440 V / rated value 	11.5 kW
<ul style="list-style-type: none"> at AC-23 A / at 690 V / rated value 	11.5 kW
<ul style="list-style-type: none"> at AC-3 / at 240 V / rated value 	5.5 kW
<ul style="list-style-type: none"> at AC-3 / at 400 V / rated value 	9.5 kW
<ul style="list-style-type: none"> at AC-3 / at 690 V / rated value 	9.5 kW
operating current / rated value	32 A
Auxiliary circuit	
number of CO contacts / for auxiliary contacts	0
number of NC contacts / for auxiliary contacts	0
number of NO contacts / for auxiliary contacts	0
operating voltage / of auxiliary contacts / at AC / maximum	500 V
continuous current / of the auxiliary contact / rated value	10 A
insulation voltage / of the auxiliary switch / rated value	500 V
Suitability	
suitability for use	
<ul style="list-style-type: none"> main switch 	Yes
<ul style="list-style-type: none"> switch disconnecter 	Yes
<ul style="list-style-type: none"> EMERGENCY OFF switch 	Yes
<ul style="list-style-type: none"> safety switch 	Yes
<ul style="list-style-type: none"> maintenance/repair switch 	Yes
Appearance	
color / of the actuating element	red
Product details	
<ul style="list-style-type: none"> product function / can be locked into OFF position 	Yes
number of bracket locks / maximum	3
hasp thickness / of the bracket locks / minimum	4 mm
hasp thickness / of the bracket locks / maximum	8 mm
product extension / optional	
<ul style="list-style-type: none"> motor drive 	No

- voltage trigger

No

Short circuit

conditional short-circuit current / with line-side fuse protection

- at 690 V / by gG fuse / rated value

50 kA

according UL

operating current / at AC / according to UL 508/UL 60947-4-1 / rated value

32 A

operating voltage / at AC / at 50/60 Hz / according to UL 508/UL 60947-4-1 / rated value

600 V

active power [hp] / at AC / at 480 V / according to UL 508/UL 60947-4-1 / rated value

20

active power [hp] / at AC / at 600 V / according to UL 508/UL 60947-4-1 / rated value

20

short-time withstand current (SCCR) / at 600 V / according to UL 508/UL 60947-4-1

5 kA

continuous current / of upstream fuse / according to UL / rated value

80 A

type of fuse / according to UL

RK5

Number

number of connectable NC contacts / for auxiliary contacts / attachable / maximum

3

number of connectable NO contacts / for auxiliary contacts / attachable / maximum

5

number of connectable CO contacts / for auxiliary contacts / attachable / maximum

0

Connections

AWG number / as coded connectable conductor cross section / solid

- maximum
- minimum

8

14

type of connectable conductor cross-sections / for copper conductor

- solid
- finely stranded / with core end processing
- stranded

1x (1,5...16mm²)

1x (1,5...10mm²)

1x (1,5...16mm²)

type of connectable conductor cross-sections / for auxiliary contacts

- solid
- finely stranded / with core end processing
- stranded

lateral auxiliary switch 2x (0,75 ... 2,5mm²), 1x 4mm²; front auxiliary switch 1x (0,75 ... 2,5mm²)

lateral auxiliary switch 2x (0,75 ... 1,5mm²), 1x 2,5mm²; front auxiliary switch 1x 2,5mm²

lateral auxiliary switch 2x (0,75 ... 2,5mm²), 1x 4mm²; front auxiliary switch 1x (0,75 ... 2,5mm²)

type of electrical connection	
<ul style="list-style-type: none"> • for main current circuit • for auxiliary contacts 	box terminal connection terminals

Requirements

design of the fuse link	
<ul style="list-style-type: none"> • for short-circuit protection of the main circuit / required • for short-circuit protection of the auxiliary switch / required 	fuse gL/gG: 40 A fuse gL/gG: 10 A

Mechanical Design

height	84 mm
width	67 mm
depth	451.5 mm
mounting type	Built-in unit fixed-mounted version
<ul style="list-style-type: none"> • mounting type / front mounting with 4-hole attachment 	No
<ul style="list-style-type: none"> • mounting type / front mounting with central attachment 	Yes
<ul style="list-style-type: none"> • mounting type / rail mounting 	Yes
net weight	411 g

Environmental conditions

ambient temperature / during operation	
<ul style="list-style-type: none"> • minimum • maximum 	-25 °C 55 °C
ambient temperature / during storage / minimum	-25 °C

Certificates

reference code	
<ul style="list-style-type: none"> • acc. to DIN EN 61346-2 • acc. to DIN EN 81346-2 	S SF

General Product Approval	Declaration of Conformity
--------------------------	---------------------------



CCC



CSA



UL



VDE

[Miscellaneous](#)



EG-Konf.

Test Certificates	Shipping Approval	other
-------------------	-------------------	-------

[Special Test Certificate](#)



LRS



PRS

[Environmental Confirmations](#)

Further information

Information- and Downloadcenter (Catalogs, Brochures,...)

<http://www.siemens.com/lowvoltage/catalogs>

Industry Mall (Online ordering system)

<https://mall.industry.siemens.com/mall/en/en/Catalog/product?mlfb=3LD2244-0TK53>

Service&Support (Manuals, Certificates, Characteristics, FAQs,...)

<https://support.industry.siemens.com/cs/ww/en/ps/3LD2244-0TK53>

Image database (product images, 2D dimension drawings, 3D models, device circuit diagrams, ...)

http://www.automation.siemens.com/bilddb/cax_en.aspx?mlfb=3LD2244-0TK53

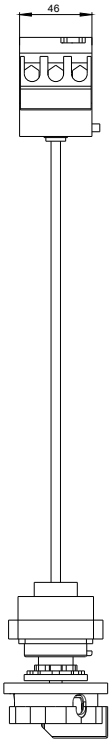
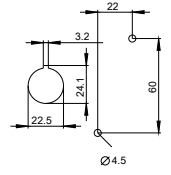
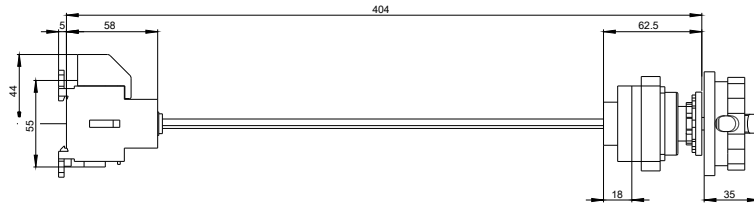
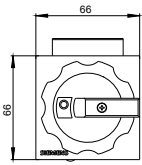
CAX-Online-Generator

<http://www.siemens.com/cax>

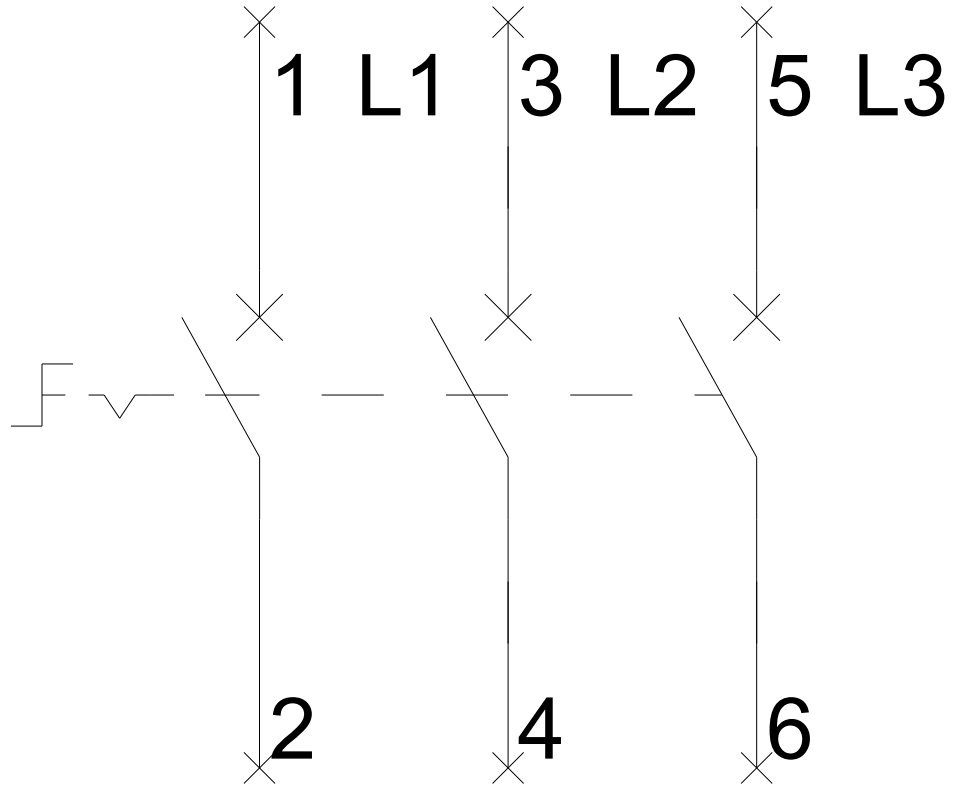
Tender specifications

<http://www.siemens.com/specifications>

Tuer/ Door/ Porte/ Base/ Plancher/
Puerta/ Porta/ Base/ Pavimento/ Fundo



-Q1



-CI

