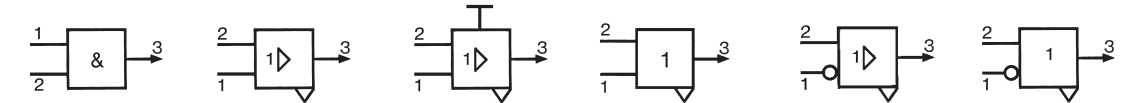
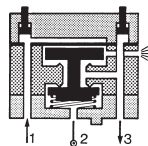
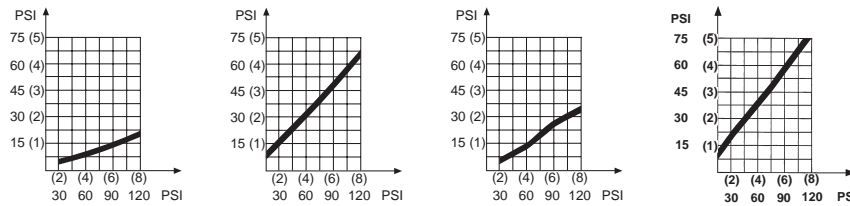


1

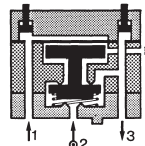
<b>81 541 001</b>	<b>81 501 025</b>	<b>81 501 065</b>	<b>81 503 025</b>	<b>81 504 025</b>	<b>81 506 025</b>
Plug-in Ø 5/32" (4)	Standard On sub-base page 4/14 - 4/15	Manual override On sub-base page 4/14 - 4/15	Low-ratio On sub-base page 4/14 - 4/15	Standard and inhibition On sub-base page 4/14 - 4/15	Low-ratio On sub-base page 4/14 - 4/15



Ø 5/32" (4 mm)					
Green	Yellow	Yellow	Orange	Light grey	Dark grey
30 > 120 (2 > 8)	30 to 120 (2 to 8)	30 to 120 (2 to 8)	30 to 120 (2 to 8)	30 to 120 (2 to 8)	30 to 120 (2 to 8)
0.106" (2.7)	0.106" (2.7)	0.106" (2.7)	0.106" (2.7)	0.106" (2.7)	0.106" (2.7)
5-1/4 (150)	6 (170)	6 (170)	6 (170)	6 (170)	6 (170)
	•	•	•	•	•
<4	<4	<4	<4	<4	<4
+20 > +120 (-5 > +50)	+20 > +120 (-5 > +50)	+20 > +120 (-5 > +50)	+20 > +120 (-5 > +50)	+20 > +120 (-5 > +50)	+20 > +120 (-5 > +50)
10 million	10 million	10 million	10 million	10 million	10 million
13	30	35	30	30	30

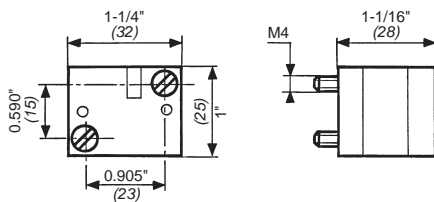


**YES element**  
The output signal "S" is only present when the pilot is present :  
 $S = a$

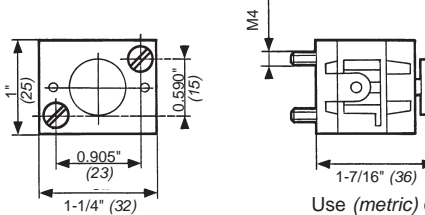


**NOT element**  
The output signal "s" is present only if the input signal "a" is NOT present. The output signal is therefore the inverse of the pilot signal.  
 $S = \bar{a}$   
If the supply port is connected to a 2nd input "b", the function obtained is called Inhibition.  
 $S = \bar{a} \cdot b$

81 501 025 - 81 503 025  
81 504 025 - 81 506 025



81 501 065



Use (metric) dimensions for critical data.

**To order, specify :**

<b>Standard products</b>	<b>1</b> Part number
<b>Standard products, non stocked</b>	Example : Logic elements 81 521 501

Products and specifications subject to change without notice.  
Consult factory for application assistance.

4