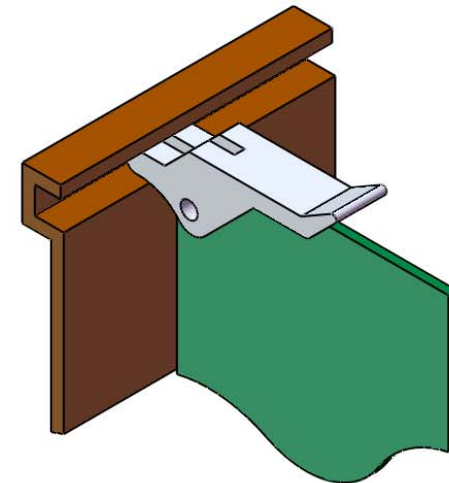
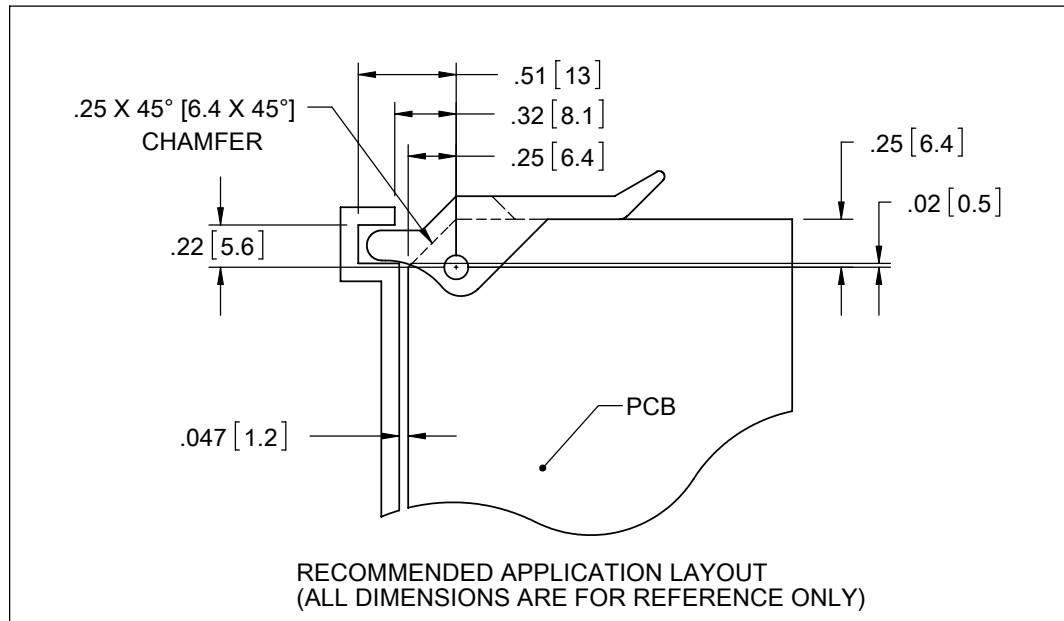


PART NO.	"S"	"PCB" THICKNESS
R1209-062	.075 [1.9]	.062 [1.6]
R1209-093	.100 [2.5]	.093 [2.4]



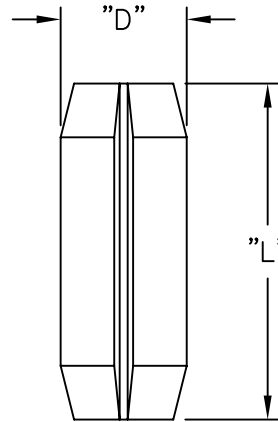
NOTES:

1. MATERIAL: NYLON 6/6 UL 94 V-2 (RMS-48)
2. COLOR: NATURAL

TITLE: INSERT/EXTRACTOR				DWG IN IN [MM]		FINAL		PRINT TYPE	
CREATED USING SOLIDWORKS	FILE #: R1209	DWN: SK	APP: SK						
TOLERANCES UNLESS NOTED XX=±.010 .XXX=±.005 FRAC.=±1/64 ANG.=±1°	SHEET: 1 OF 1	SHEET SIZE: A	DT: 10/24/06	CHKD: SJ	PART #		PRINT TYPE		
	RE: RICHCO, INC.	RICHCO, INC. ENG@RICHCO-INC.COM (773) 539-4060		SEE TABLE		CA			
REV.	DESCRIPTION	ENGR.	DATE						

F	SEE CO 200041 FOR CHANGES	SK	09/28/07
E	REDRAWN, SEE ECN #1237 FOR CHANGES	SK	10/24/06
-	SEE ENG. FOR REV A-D	-	-
REV.	DESCRIPTION	ENGR.	DATE

PART NO.	DIM. "L"	DIM. "D"
RRP-250	1/4 (6.4)	3/32 (2.4)
RRP-312	5/16 (8.0)	3/32 (2.4)
RRP-375	3/8 (9.5)	1/8 (3.2)



ROLL PINS:(RRP) FOR USE WITH THE FOLLOWING  
CARD INSERTERS/EXTRACTORS:

RRP-250	RRP-312	RRP-375
R1001-062	R11073-062	R1209-062
R1002-093	R11073-093	R1209-093
R1003-125	R11073-125	R1209-125
R1107-062	R1107310-062	
R110710-062	R1107310-093	
	R1107310-125	

NOTES:

- MAT'L: PASSIVATED STAINLESS STEEL  
SPRING PINS PER MIL-P-10791 (RMS-224)

TITLE: ROUND ROLL PINS			DWG IN IN (MM)		FINAL		PRINT TYPE	
TOLERANCES UNLESS NOTED .XX=±.010 .XXX=±.005 FRAC=1/64 ANG=1°			FILE # RRP	DWN: P.B.	APP:	PART #		CA
REV			MAT'L: SEE NOTES	DT: 03-10-95	DT:	SEE TABLE		
C	SEE ECN #1289 FOR CHANGES	SK 02.15.07	RE: RICHCO, INC.		RICHCO INC. PO BOX 804238, CHICAGO, 60680 (773) 539-4060			
B	CHANGED FILE NO. AND TITLE BLOCK	SM 05.16.01						
A	GIVEN PART NUMBER	JB 09.05.95						
REV	DESCRIPTION	ENGR DATE						