

## Features

- Maximum operating pressure is 35 bar.
- Operating temperature range -20°C to +100°C.
- Material: Brass Nickel-Plated Finish
- Single Shut Off (One side is with valve)
- Euro Profile DN2.7
- Micro Series
- Flow 165 l/min
- Compatible with:  
TST 059  
PARKER - RECTUS 20, 91  
WALTHER 06 - 003  
HASCO Z80 - 5

## RS PRO Pneumatic Quick Connect Coupling

RS Stock No.: 0325527



RS PRO is the own brand of RS. The RS PRO Seal of Approval is your assurance of professional quality, a guarantee that every part is rigorously tested, inspected, and audited against demanding standards. Making RS PRO the Smart Choice for our customers.

## Product Description

### RS PRO Series 20 Quick Connect Couplings

Pneumatic quick-connect coupling connectors are found across industry in pneumatic systems as diverse as robotic assembly lines and other equipment.

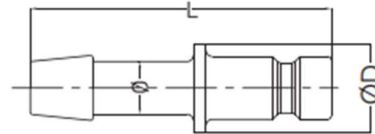
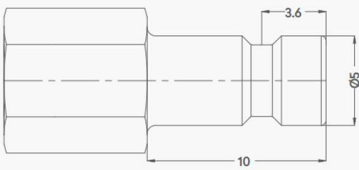
- Maximum operating pressure is 35 bar.
- Operating temperature range -20°C to +100°C.
- Material: Brass Nickel-Plated Finish
- Single Shut Off (One side is with valve)
- Euro Profile DN2.7
- Micro Series
- Flow 165 l/min
- Compatible with:
  - TST 059
  - PARKER - RECTUS 20, 91
  - WALTHER 06 - 003
  - HASCO Z80 - 5

## Specifications

Manufacturer Series	020
Coupling Type	Quick Connect Coupling Plug
Connection Standard	DN 2.7 Euro Profile Micro Series
Connection Standard Compatible With	TST 059, PARKER-RECTUS 20 & 91, WALTHER 06 - 003; HASCO Z80 - 5
Minimum Operating Temperature	-20°C
Maximum Operating Temperature	+100°C
Maximum Operating Pressure	35bar
Flow	165 l/min
Flow Direction & Sealing	Through Type Coupling
Material	Brass
Finish	Nickel Plated
Connection Type	Hose Barb
Thread Size	N/A
Thread Standard	N/A
Thread Gender	N/A
Coupling Gender	Male
Threaded Connection	N/A
Seal material	N/A
Hose Barb Connection	6 mm

## Specifications

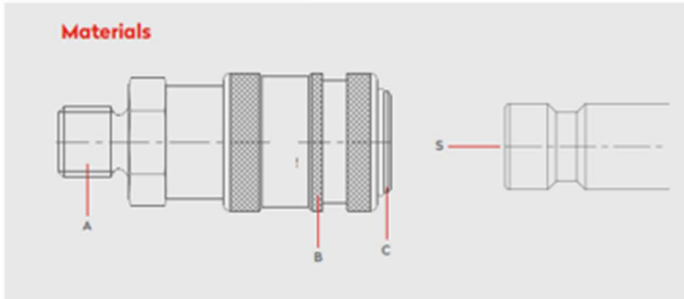
### Plug Profile Serie 020



### Dimensions (mm)

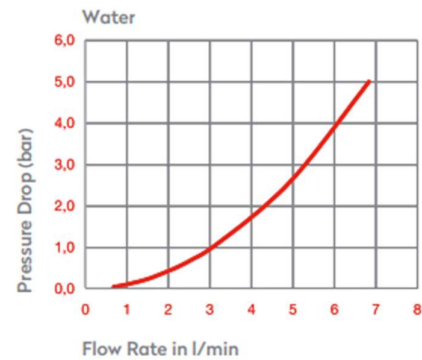
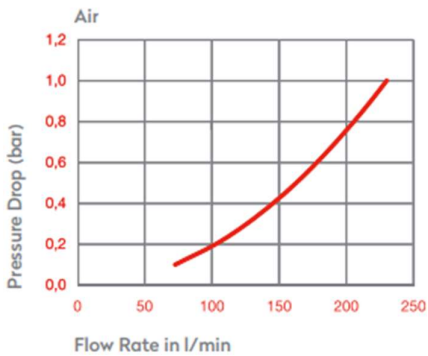
SW	L	ØD
-	24	8

### Materials



### Material Code

A = Brass Nickel Plated  
B = Brass Nickel Plated  
C = Brass Nickel Plated  
S = Brass Nickel Plated



## Series 20 Quick Connect Couplings



0 - 35 bar  
(0-508 PSI)



-20° to +100°C (NBR)  
-4° to +212°F

Shut Off  
Type



OM 100 - 00300  
OM 100 - 00500

**FLOW**

165 lt/min

**DN**

**2.7** mm