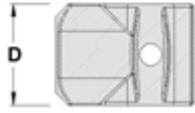
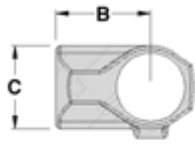


Type L10 - Single Socket Tee



Type	Pipe Reference	Dimension (mm)							Weight (kg)
	A	B	C	D	E	F	G	H	
L10-6	6	52	42.5	56					0.13
L10-7	7	65	53	54					0.20
L10-8	8	74	60	70					0.30
L10-9	9	90	74	82					0.48

Designed to give a 90 degree butt joint between two tubes. Frequently used for the joint between end uprights and the middle rail on guardrailing where the site is straight and level. Also for base ties on racking. This fitting cannot be used where the tubing through the sleeve 'A' is required to be joined within the Kee Lite fitting.