

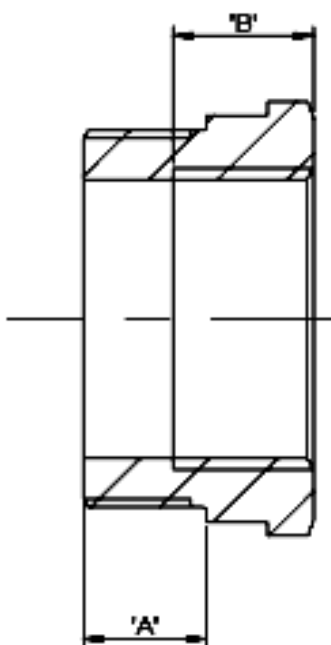


THREAD ADAPTORS

- Description**
- Thread Adaptors/Converters for Metric, PG and NPT threads
Enlargers – E Reducers – R Converters - TC
- Material**
- Manufactured in Brass, Nickel Plated Brass or Stainless Steel 316
EX/* - Brass EXN/* - Nickel Plated Brass EXS/* - Stainless Steel 316
- Intended Use**
- Groups I & II
Exe, Exd and ExtD Zones 1, 2, 21 & 22
Class I Div I ABCD
Class II Div I EFG
UL1203
- Approvals**
- ATEX directive 94/9/EC (ATEX 95) to standards
IEC 60079-0, IEC 60079-7, IEC 60079-1, EN60079-0, EN60079-7, EN60079-1, IEC61241-0, IEC61241-1, EN61241-0, EN61241-1
II 2 GD Exd IIC & Exe II ExtD
CAN/CSA-C22.2 No. 60079-0 March 2007: CAN/CSA-22.2 No 60079-1 March 2007
UL 1203 4th Ed. With revisions through Oct 28, 2009

Certification

- ATEX BASEEFA 07ATEX0247X
- IECEx IECEx BAS07.0090X
- ETL 3176087



Available in Metric, NPT or PG Threads with all forms in male and female.

- Metric M16 to M75 (M16 is not CSA approved)
- NPT 3/8" to 2 1/2" (3/8" is not CSA approved)
- PG PG9 to PG42 (No PG Thread is CSA Approved)

Length 'A' and B for all metric and PG forms is 16mm

Male 'A' Thread Data for NPT threads to give a min 5 full threads engagement								
Size	3/8"	1/2"	3/4"	1"	1 1/4"	1 1/2"	2"	2 1/2"
Min Length	15.2	20.2	20.2	25.0	25.6	26.0	26.9	39.9

Female 'B' Thread Data for NPT threads to give a min 5 full threads engagement								
Size	3/8"	1/2"	3/4"	1"	1 1/4"	1 1/2"	2"	2 1/2"
Min Length	15.9	20.8	19.7	25.8	26.3	26.3	26.7	36.4

- Examples:-
- EX/M20-M32/E M20 Male to Female M32 Brass enlarger
 - EXN/M25-075/TC M25 Male to 3/4" NPT Nickel Plated Converter
 - EXS/M63-M32/R M63 Male to M32 Female Stainless Steel Reducer