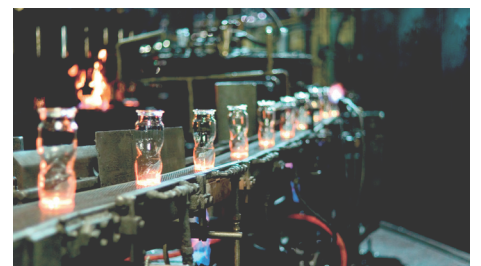


ABB Thyristor power controller DCT880, 20 A to 4160 A



- Ideal to control electro-thermal processes
- 20 A to 4160 A
- 400 V / 525 V / 690 V
- Suitable for resistive and inductive loads as well as for infrared heaters
- Reduces energy costs by means of integrated load management and Multitap
- User-friendly and flexible



Power and productivity
for a better world™



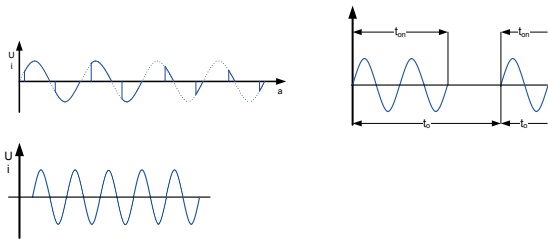
Simplifying your world without limiting your possibilities!

DCT880 the new simplicity

Demanding industrial customers receive a high level of user friendliness using the DCT880. It is equipped with the advantages of the ABB ACS880 drive family, the multilingual plain text control panel, a USB interface and advanced PC tools.

Flexible control

The variety of control methods (phase control, full-wave burst control, half-wave control and I-, U-, P- and I^2 control) ensures that even the most demanding applications with short rise times or a high hot / cold ratio can be controlled dynamically and accurately.



Removable memory unit

Stores all the software and parameter configurations in an easily replaceable and simple-to-install module.



Integrated current measurement

The high-precision 3-phase current measurement ensures a precise calculation of the load resistance. Thus a detailed load circuit monitoring is enabled and the system availability is significantly increased.

Remote monitoring

With a built-in web server, NETA-21 makes worldwide access easy to industrial applications.

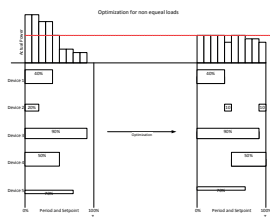


Programming of applications

The DCT880 has three free process controllers. It can be precisely tuned using application programming (IEC61131-3) to the needed requirements. Additionally it can be combined with other components such as ABB PLCs and HMI.

Load optimization

Reduction of peak loads using optimized load balancing in parallel operation of multiple devices which communicate directly with each other (+S552).



Thyristor Power controller DCT880

With the new DCT880 ABB offers its customers a thyristor power controllers for precise control of resistive or inductive heaters and infrared heaters in applications for annealing, drying, melting or heating in glass, plastic or metal industry.



Intuitive human-machine interface

Intuitive, high-contrast and high-resolution display enabling easy navigation in multiple languages (+J404).



Startup and maintenance tool

PC tool for startup, configuration, process tuning and daily use. The PC tool used for the well known ABB ACS880 drives family is connected via Ethernet or USB interface.



Communication with all major automation networks

Fieldbus adapters enable connectivity with all major automation networks.



Extended connectivity

In addition to the standard interfaces, the DCT880 has three built-in slots for additional I/O extension modules.



Tailor made solutions

ABB offers ready to use cabinets solutions with or without integrated transformers. They are tailored according to individual requirements.

ABB Thyristor Power controller DCT880



Size	Rated current	Mains voltage [V _{AC}]										Dimensions
		W03 (3 legs)					W02 (2 legs)					
	I _{AC} [A]	110/230	400/525	690	800	990	110/230	400/525	690	800	990	h*w*d [mm]
T1	20	●	●				●	●				370*270*215
	35	●	●	●			●	●	●			
	55	●	●				●	●				
	80	●	●	●			●	●	●			
	100	●	●	●			●	●	●			
	125	●	●				●	●				
T2	160	●	●	●			●	●	●		370*270*270	
	200	●	●				●	●	●			
	245	●	●				●	●				
T3	325	●	●				●	●			466*270*315	
	360	●	●	●			●	●	●			
	420	●	●				●	●				
T4	550	●	●				●	●			670*270*352	
	630			●					●			
	675	●	●				●	●				
	740	●	●				●	●				
T5	890	●	●	●							750*270*372	
	960						●	●	●			
T6	1300	●	●	●			●	●	●		1200*468*431	
	1750	●	●	●			●	●	●			
T8	2100	●	●	●	●	●	●	●	●	●	1725*990*580	
	2700	●	●	●	●	●	●	●	●	●		
	3200	●	●	●	●	●	●	●	●	●		
	3900			●	●				●	●		
	4200	●	●				●	●				

Load configuration

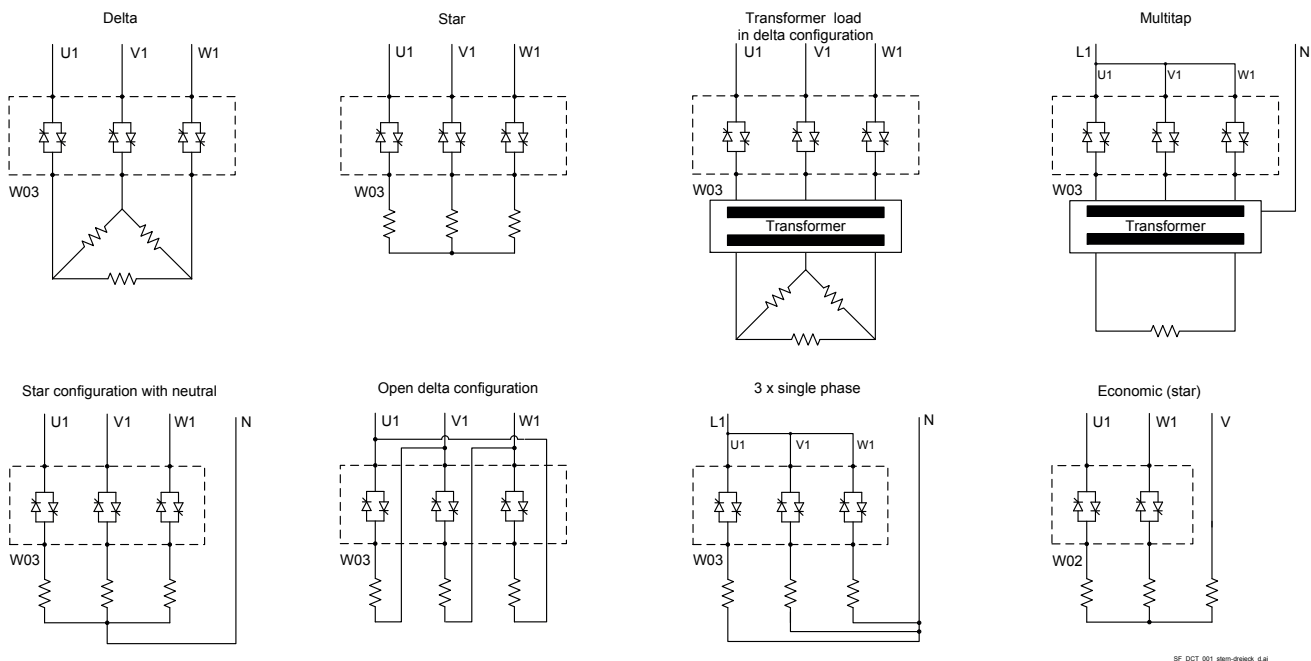


ABB Automation Products GmbH

Motors and Drives

Wallstadter Straße 59

D-68526 Ladenburg

Germany

Telefon: +49 (0) 6203 717 608

Telefax: +49 (0) 6203 717 609

dc-drives@de.abb.com

www.abb.com/dc-drives

© Copyright 2015 ABB. All rights reserved.

Specifications subject to change without notice.

Power and productivity
for a better world™

