

Installation Guide for PCMCIA cards

**In Windows XP, 2000 and 98 using Serial
Solutions 5.1**

Version: 1.0



PM-121 (PCMCIA RS422/485 2-port card) and PM-010 (PCMCIA RS232 2-port card) installations are used as examples for the screenshots in this document. Screenshots of the final installation of all four PCMCIA cards, as shown in Device Manager, are included in Appendix A.

Please ensure that there is currently no Serial Solutions software installed on your PC. If you are unsure, please run the uninstall program "SsUnist.exe" included on the CD before installing the new software, and reboot the machine.

Contents

1. Windows XP	3
1.1. Installation	3
1.2. Changing Properties	7
1.3. Changing the COM labels	8
2. Windows 2000	9
2.1. Installation	9
2.2. Changing Properties	23
2.3. Changing the COM labels	24
3. Windows 98	25
3.1. Installation	25
3.2. Changing Properties	31
3.3. Changing the COM labels	32

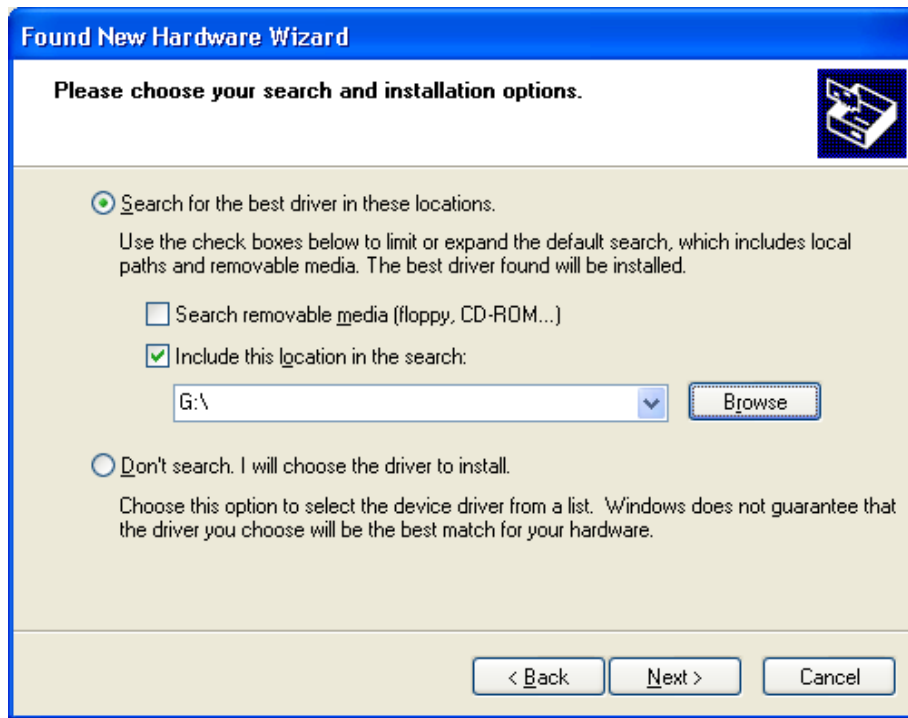
1. Windows XP

1.1. Installation

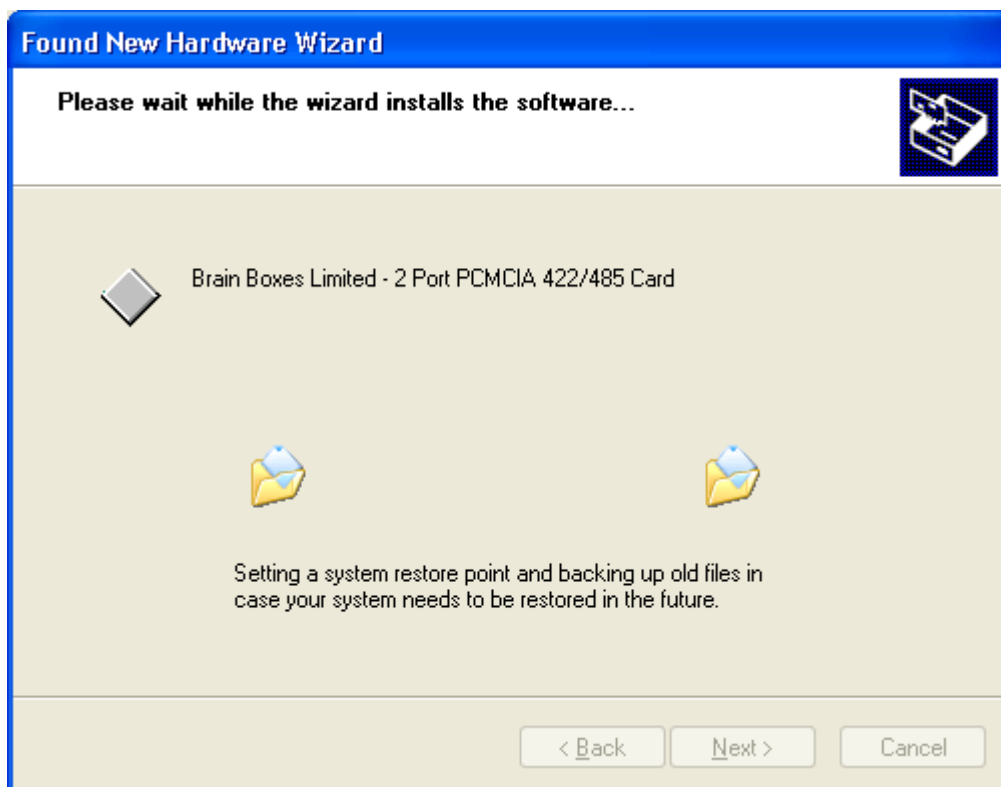
Insert the PCMCIA card into the laptop and choose to 'Install from a list or specific location (Advanced)' when the Found New Hardware wizard appears:



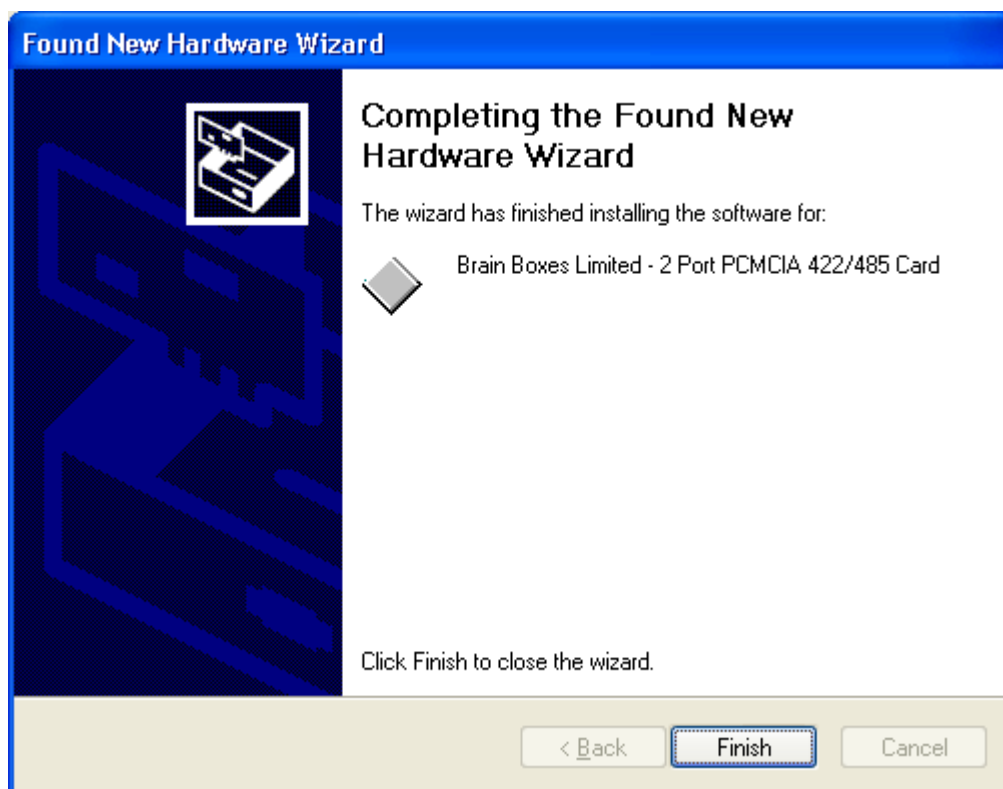
Select the 'Search for the best driver in these locations' radio button and check the 'Include this location in the search:' box. Use the Browse button to browse to the root of the Serial Solutions CD:



The driver files will start to copy across to your PC:

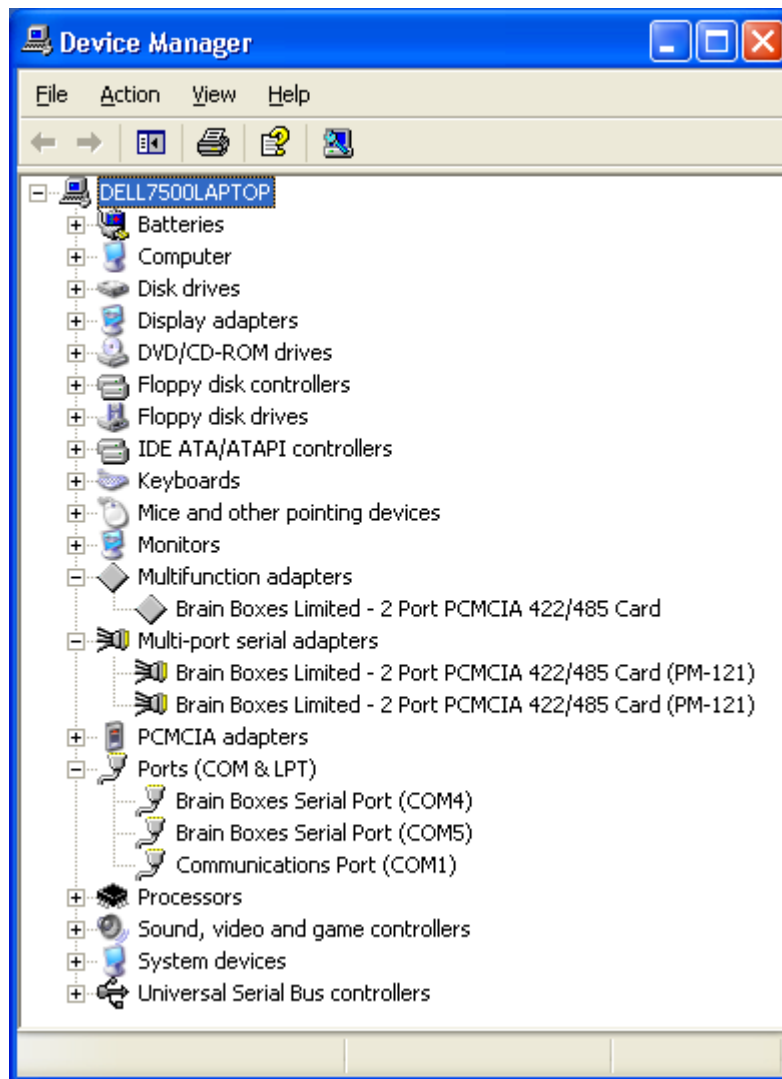


When the files have finished copying across the Found New Hardware Wizard will finish. Press 'Finish':



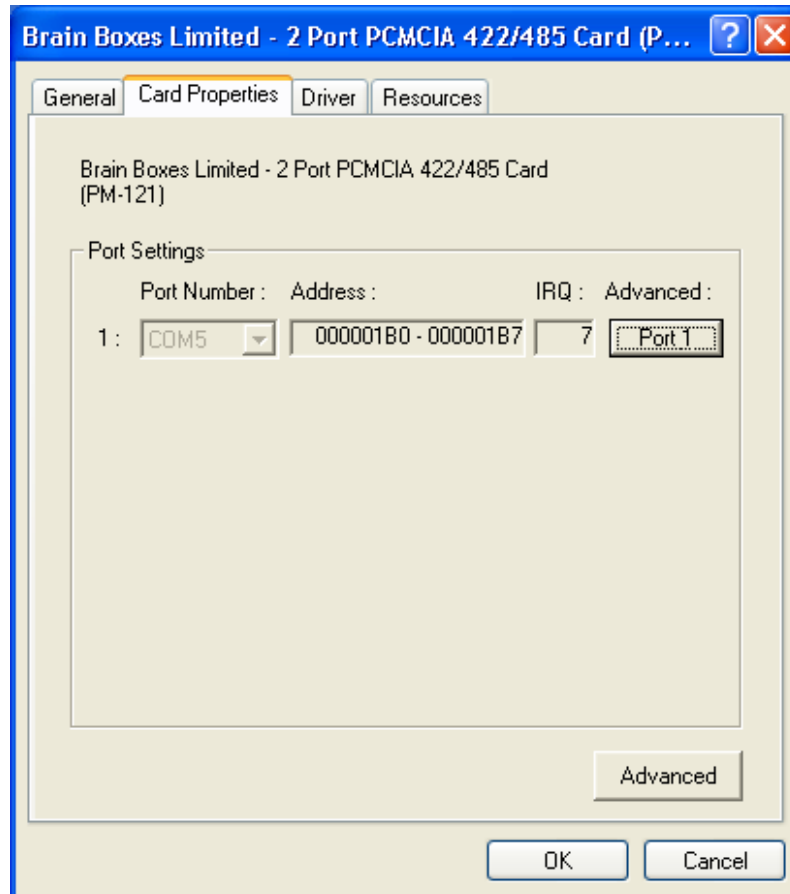
The card and its ports will then continue to install automatically.

Open Device Manager by going to Control Panel, then System and then the Hardware tab. The card is installed under Multifunction Adapters, Multi-port Serial Adapters and Ports:

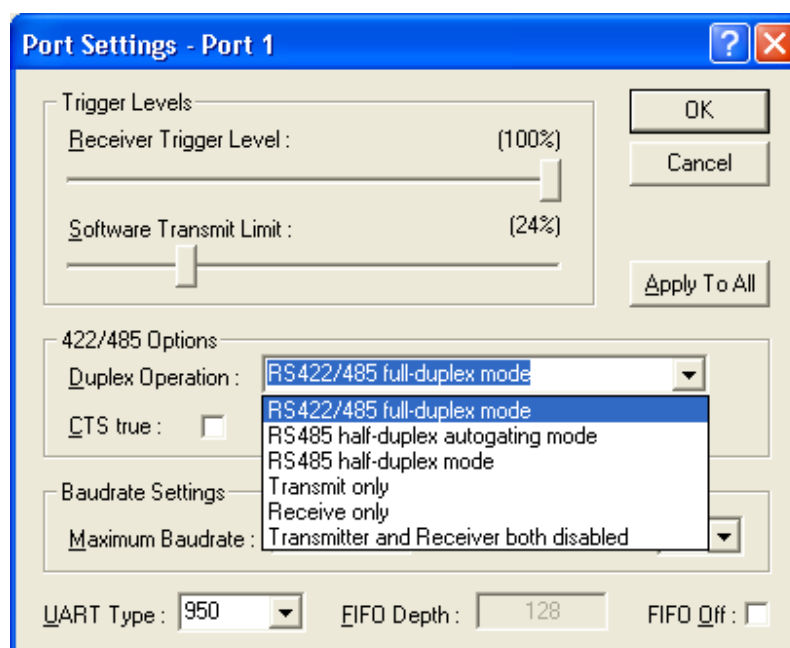


1.2. Changing Properties

To change any of the settings for one of the ports, select the port under Multi-port Serial Adapters in Device Manager (Control Panel/System/Hardware), right click, select Properties and then select the Card Properties tab from the properties window that appears:

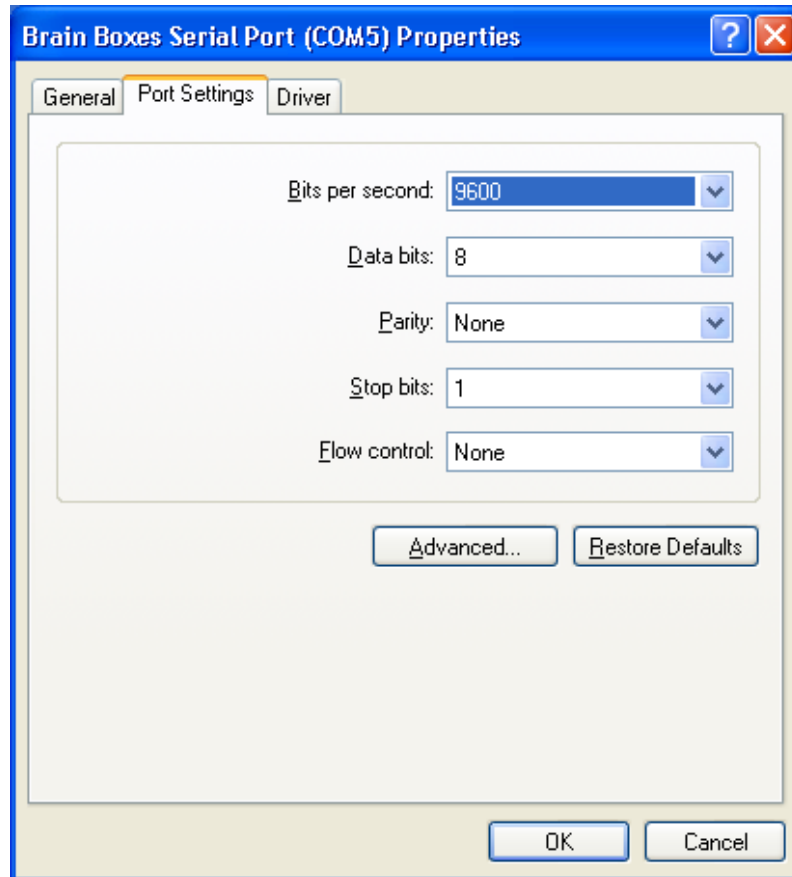


Select the 'Port 1' button under the 'Advanced' title to display the changeable settings. **Please note** that this screen will differ for RS232 cards:

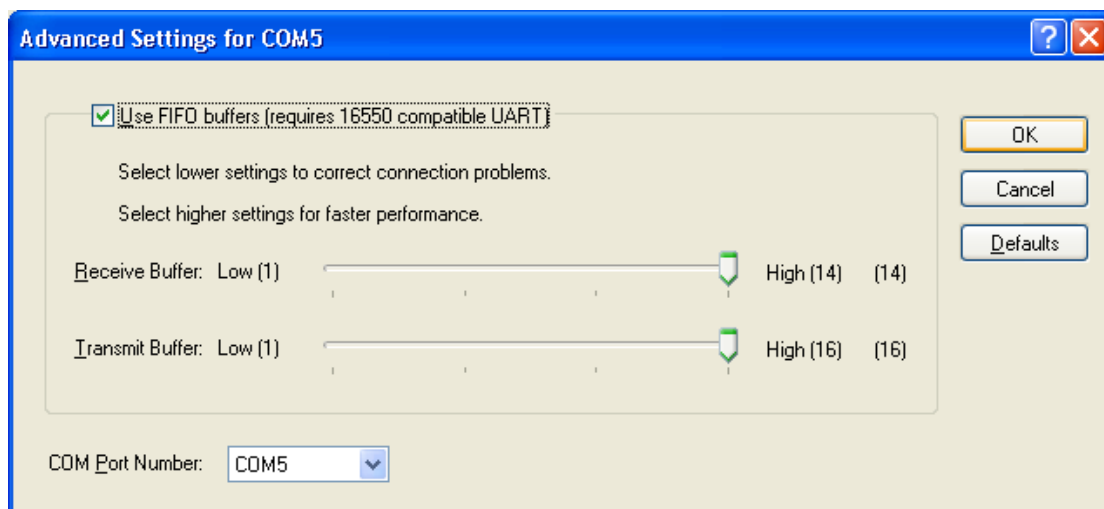


1.3. Changing the COM labels

To change the COM labels that have been assigned to the PCMCIA card, select the port under the Ports section in Device Manager (Control Panel/System/Hardware), right click, select Properties and then select the Port Settings tab from the properties window that appears:



Select the Advanced button to display the advanced settings for the port and the COM label can be changed from the drop down box next to the 'COM Port Number:' section:

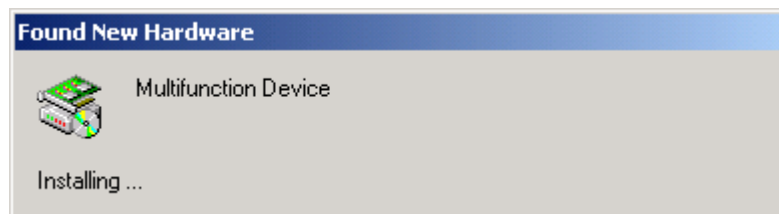


2. Windows 2000

2.1. Installation

The installation of 2-port cards is slightly different to 1-port cards in Windows 2000. 1-port cards are more straightforward than the 2-port card example that follows:

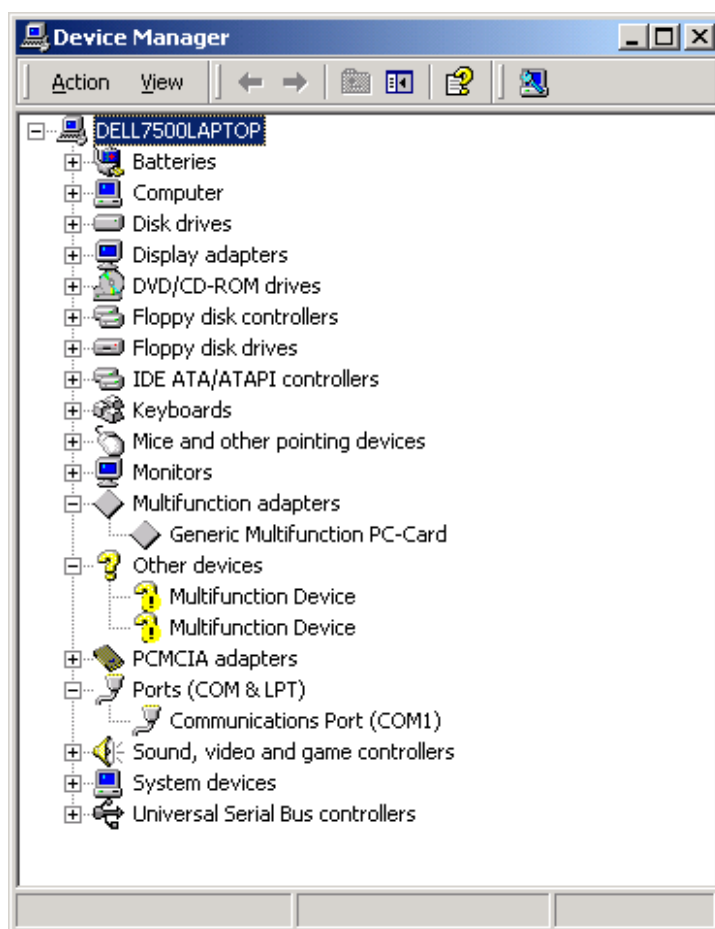
Insert the PCMCIA card into the laptop. Windows will begin to install the card as a Multifunction Device:



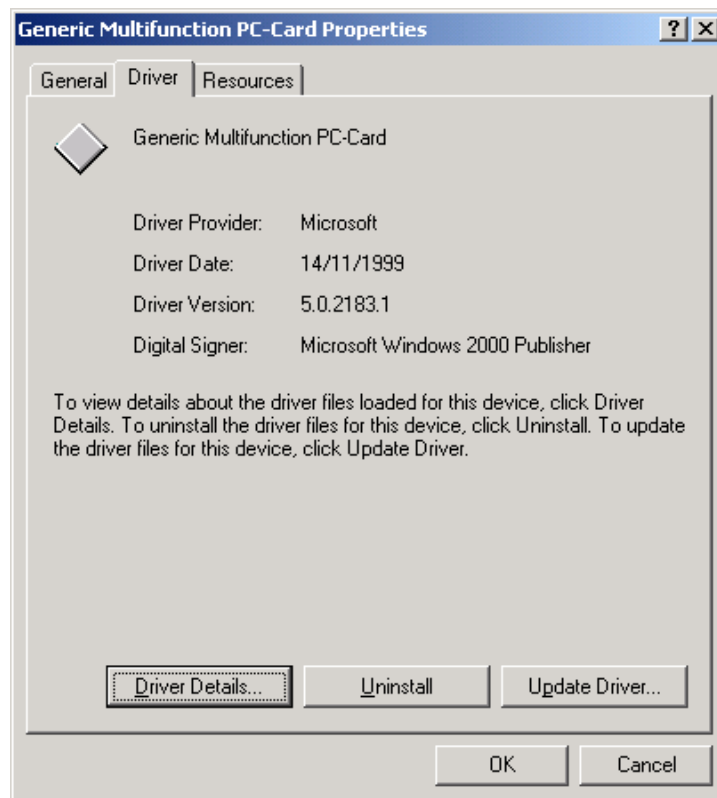
Choose to 'Cancel' when the Found New Hardware wizard appears:



Open Device Manager by going to Control Panel, then System and then the Hardware tab. The card is installed under Multifunction Adapters and Other Devices with exclamation marks:



Select the entry under Multifunction Adapters, right click, select Properties and then select the Driver tab:



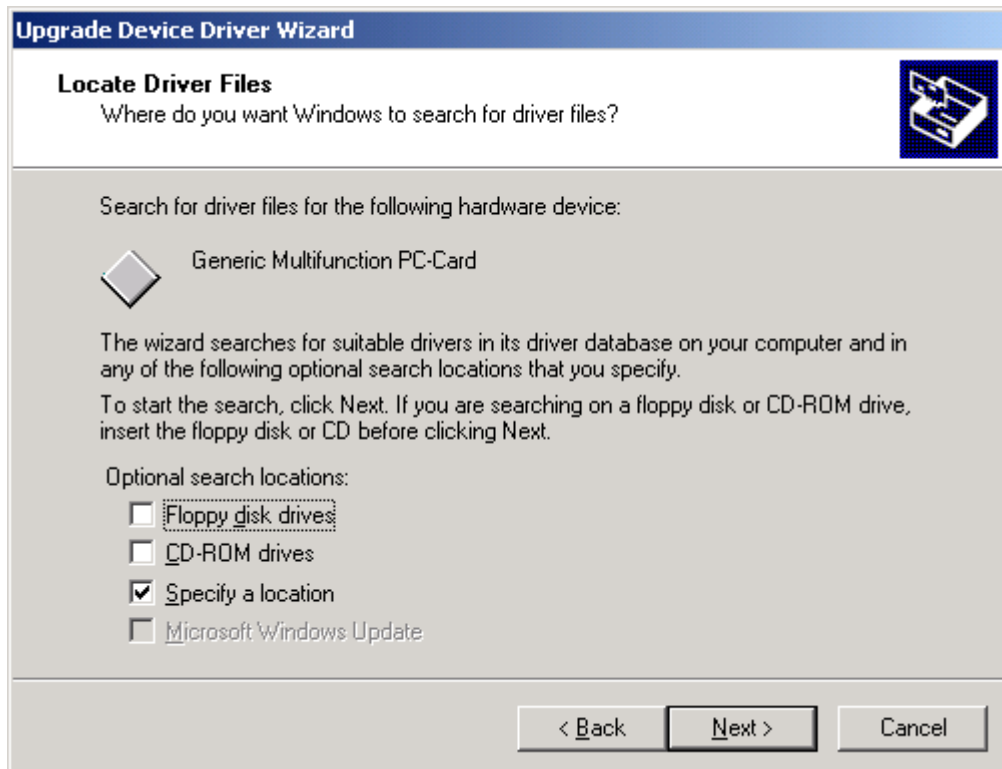
Press the 'Update Driver' button to start the Upgrade Device Driver Wizard. Press 'Next':



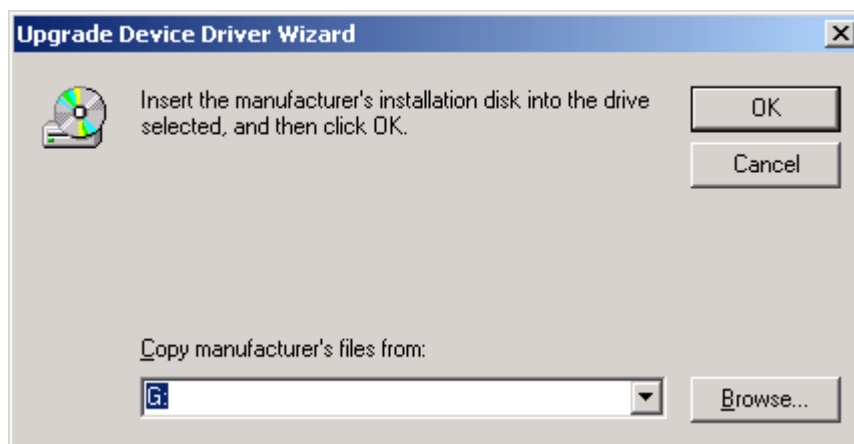
Select the 'Search for a suitable driver for my device (recommended)' radio button:



Select the 'Specify a location' check box:



Use the Browse button to browse to the root of the Serial Solutions CD:



Ensure that the file 'bbmf.inf' is found on the CD drive:



The Upgrade Device Driver Wizard will complete when it has finished copying the files from the CD:



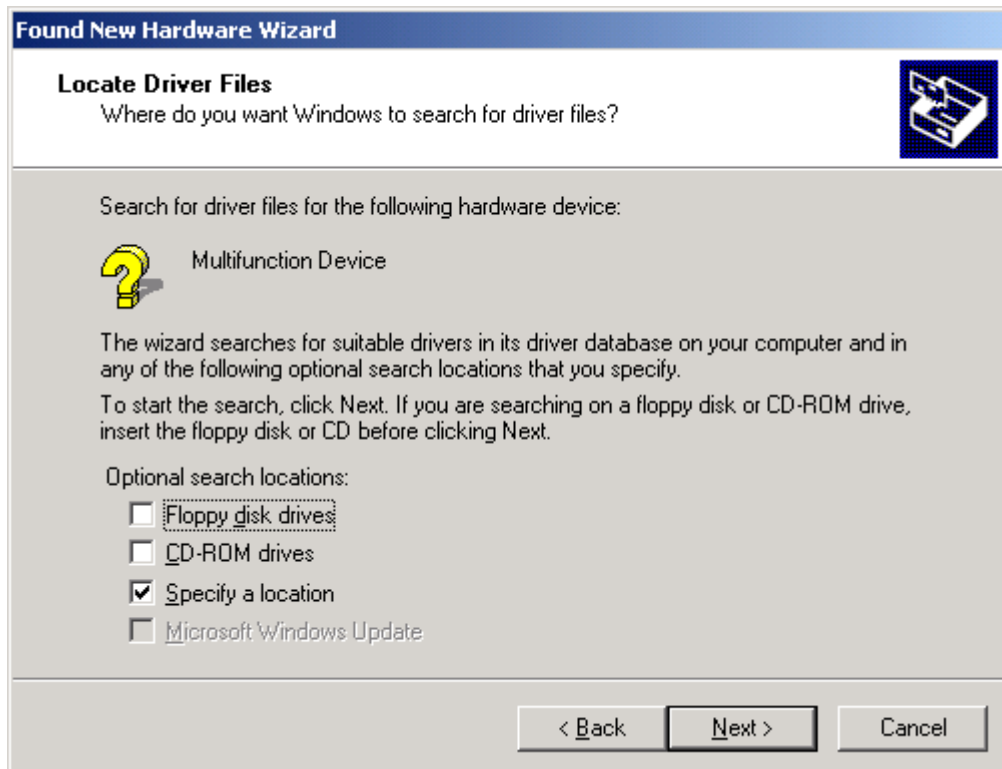
Now the Found New Hardware Wizard will begin to install the two device that previously had exclamation marks against them in Device Manager:



Select the 'Search for a suitable driver for my device (recommended)' radio button:



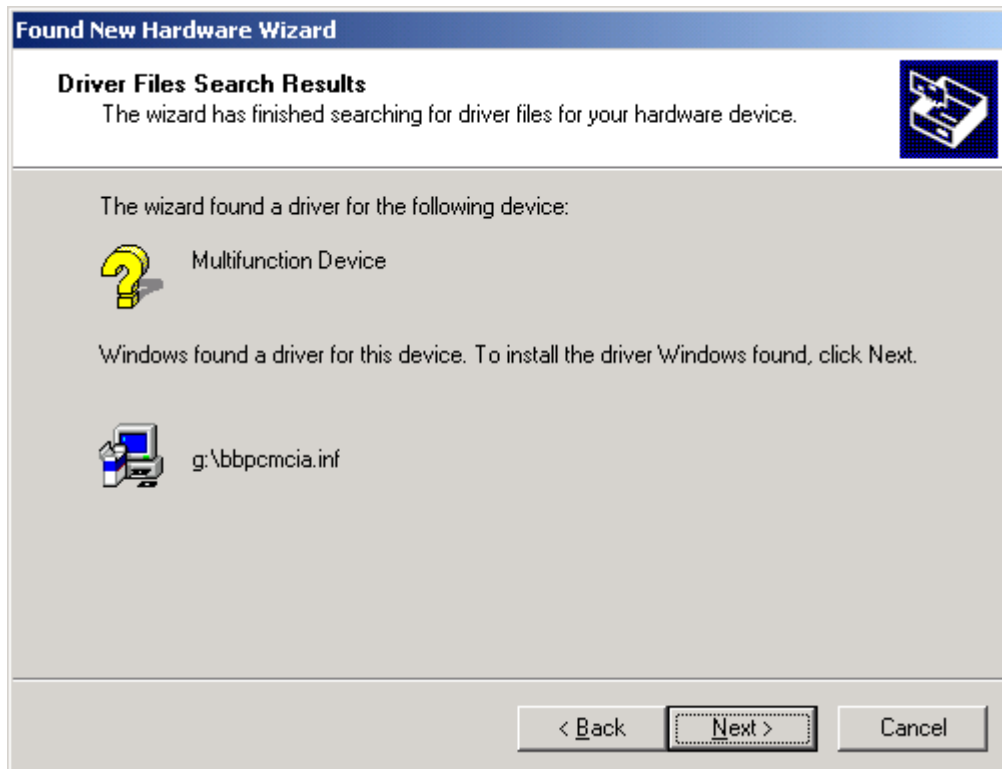
Select the 'Specify a location' check box:



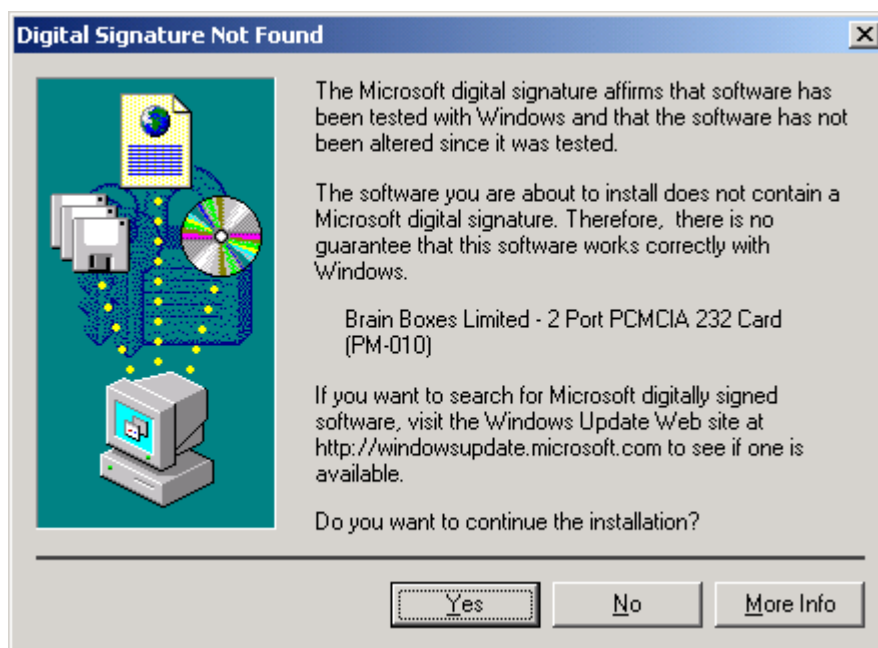
Use the Browse button to browse to the root of the Serial Solutions CD:



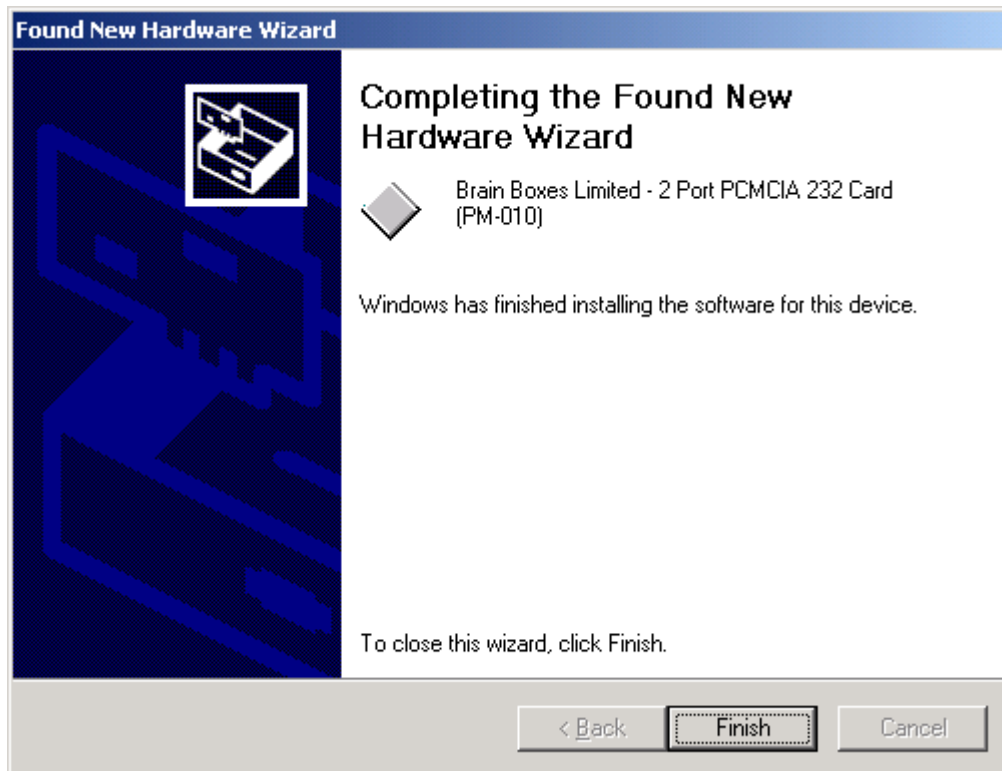
The file 'bbpcmcia.inf' should be found on the CD:



Choose 'Yes' when the following screen regarding Digital Signatures appears:



The wizard will now finish successfully:



The second device that was seen in Device Manager with an exclamation mark against it will now be installed by the operating system automatically.

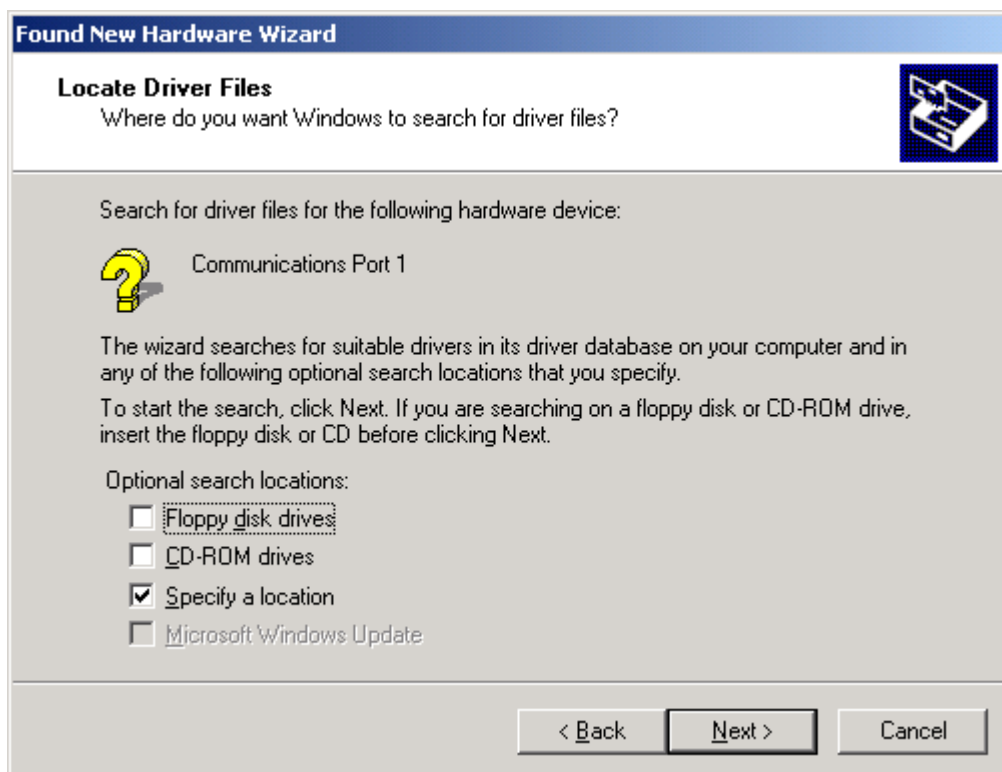
The first of the two communication ports will now be detected and a Found New Hardware Wizard will start:



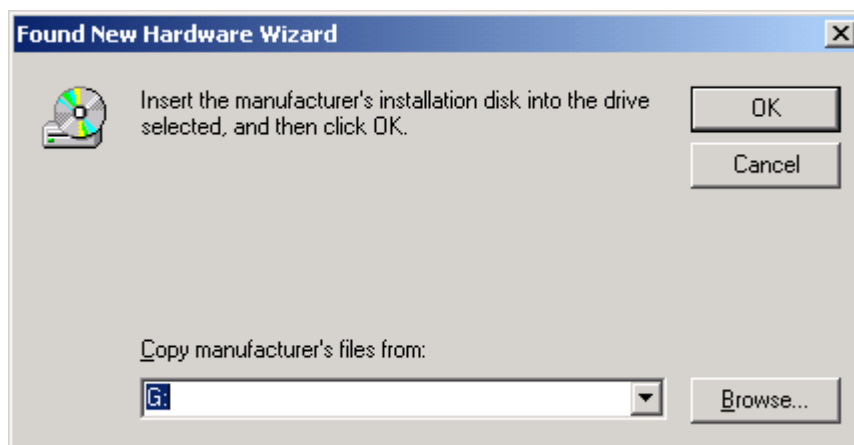
Select the 'Search for a suitable driver for my device (recommended)' radio button:



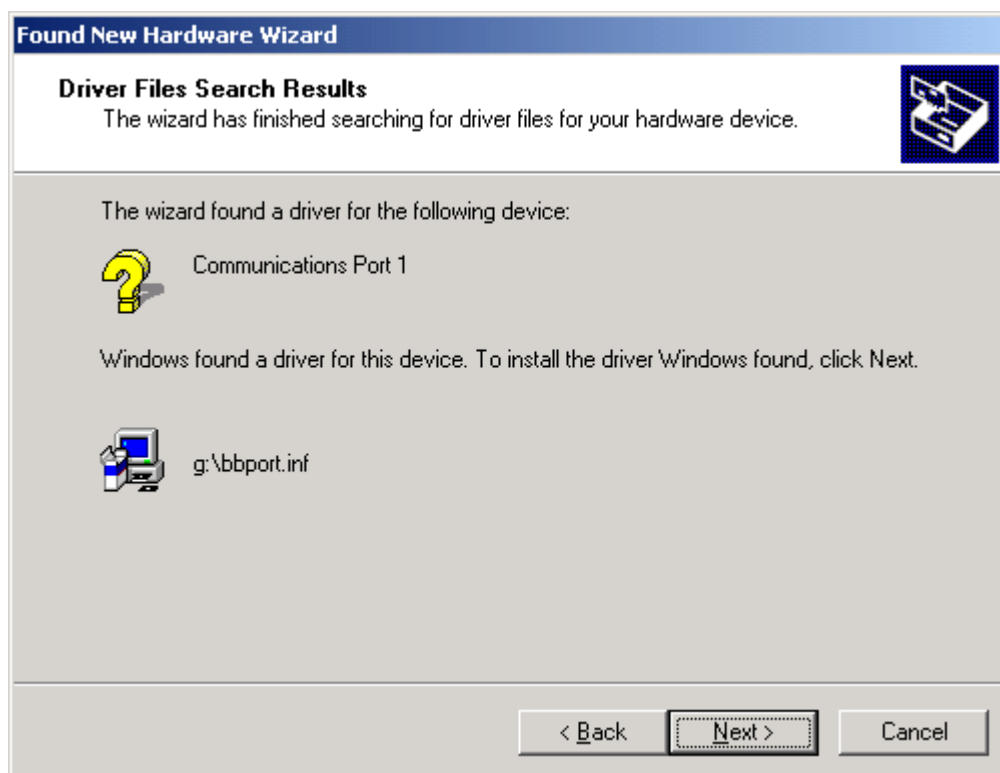
Select the 'Specify a location' check box:



Use the Browse button to browse to the root of the Serial Solutions CD:



The file 'bbport.inf' should be found on the CD:

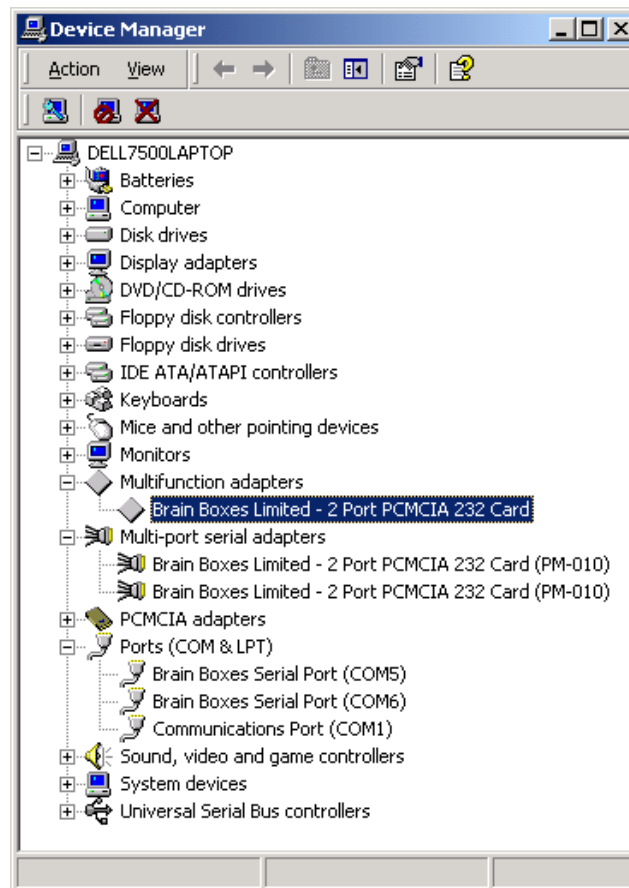


The wizard will now finish successfully:



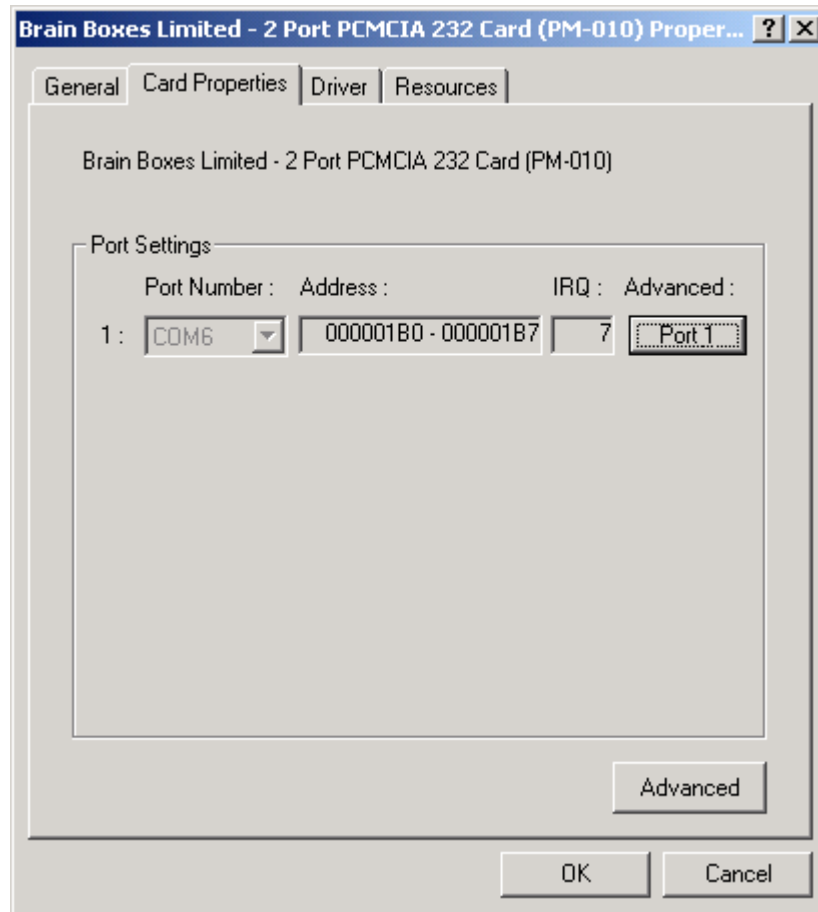
The second port will now be installed by the operating system automatically.

Open Device Manager (Control Panel/System/Hardware). The card is installed under Multifunction Adapters, Multi-port Serial Adapters and Ports:

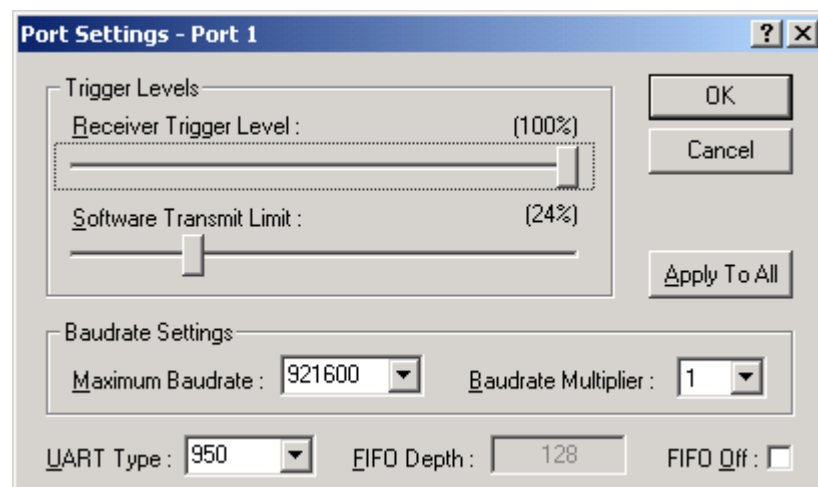


2.2. Changing Properties

To change any of the settings for one of the ports, select the port under Multi-port Serial Adapters in Device Manager (Control Panel/System/Hardware), right click, select Properties and then select the Card Properties tab from the properties window that appears:

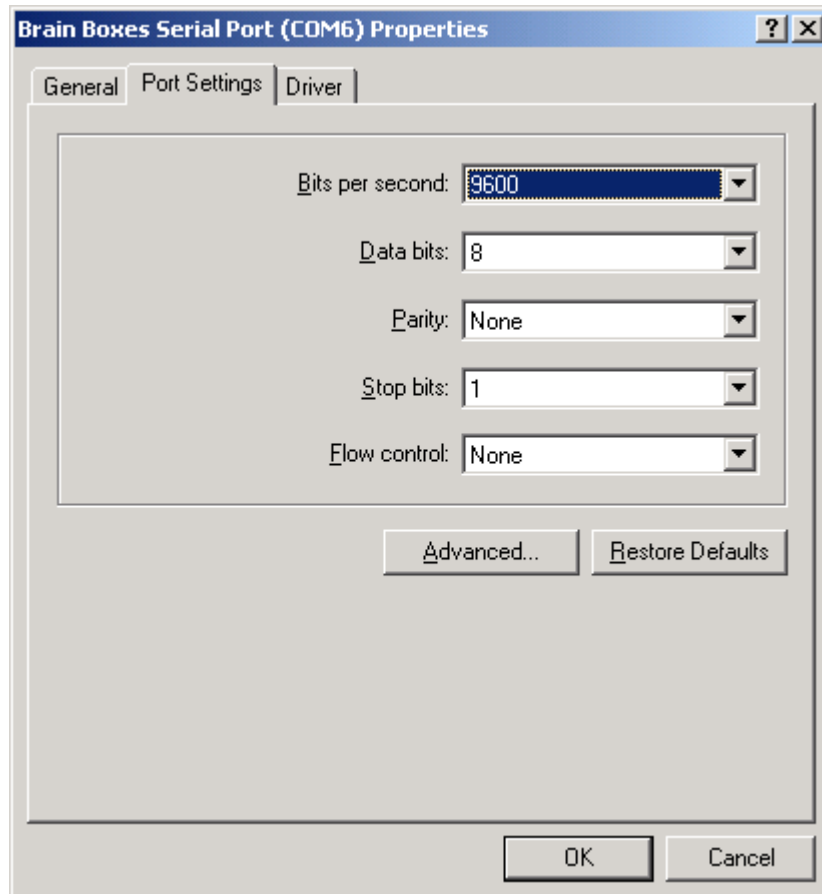


Select the 'Port 1' button under the 'Advanced' title to display the changeable settings. Please note that this screen will differ for RS422/485 cards:

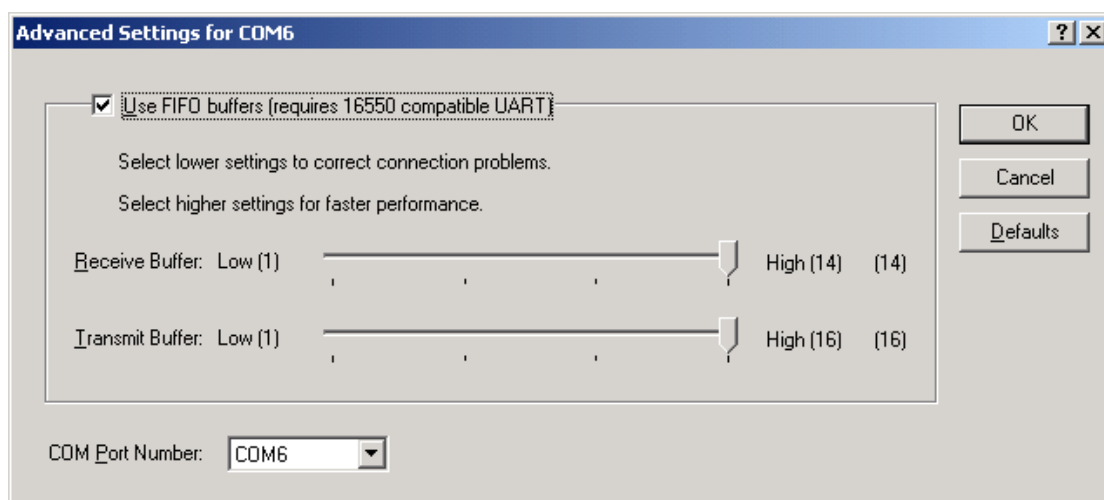


2.3. Changing the COM labels

To change the COM labels that have been assigned to the PCMCIA card, select the port under the Ports section in Device Manager (Control Panel/System/Hardware), right click, select Properties and then select the Port Settings tab from the properties window that appears:



Select the Advanced button to display the advanced settings for the port and the COM label can be changed from the drop down box next to the 'COM Port Number:' section:



3. Windows 98

3.1. Installation

Insert the PCMCIA card into the laptop. Windows will begin the Add New Hardware Wizard:



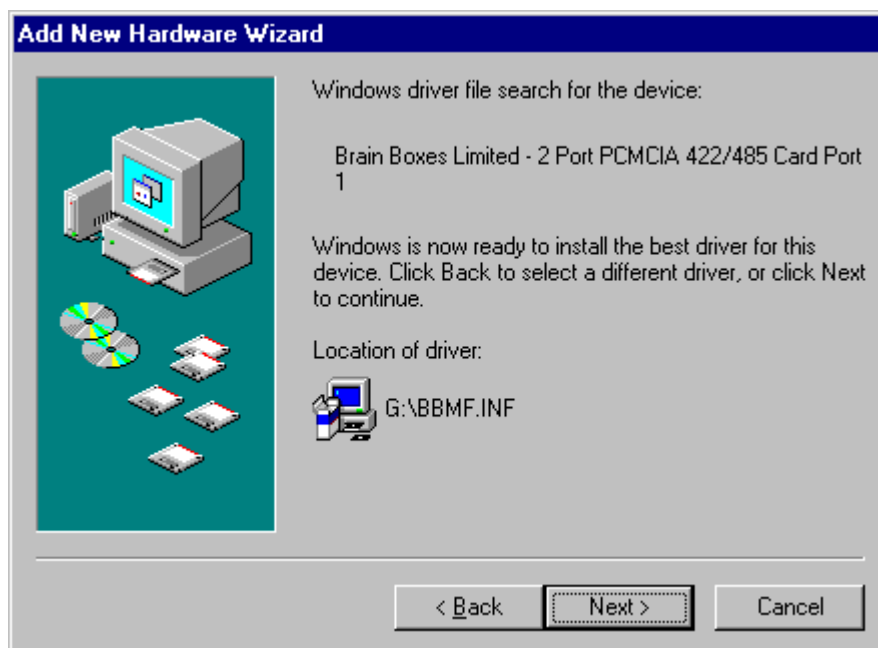
Select the 'Search for the best driver for your device (Recommended)' radio button:



Select the 'Specify a location' check box and use the Browse button to browse to the root of the Serial Solutions CD:



The file 'BBMF.inf' should be found on the CD:



When the files have been copied across the wizard will now finish:



A second Add New Hardware Wizard will start for the installation of the ports:



Select the 'Search for the best driver for your device (Recommended)' radio button:



Select the 'Specify a location' check box and use the Browse button to browse to the root of the Serial Solutions CD:



The file 'BBPORT.inf' should be found on the CD:

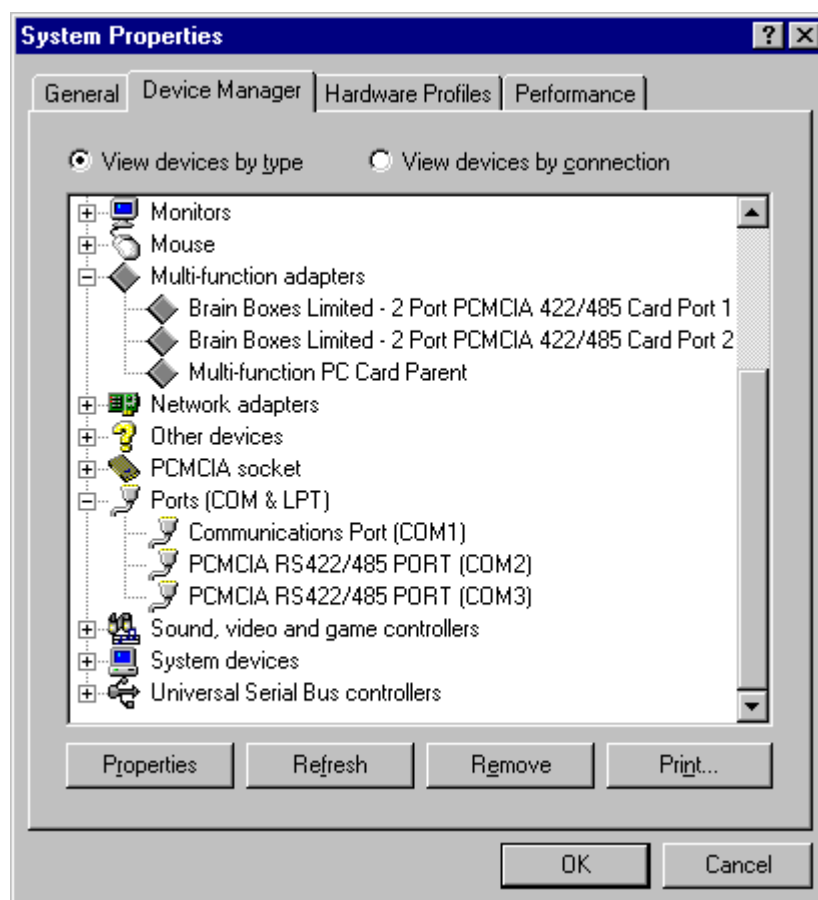


When the files have been copied across the wizard will now finish:



The operating system will continue and install the second port automatically.

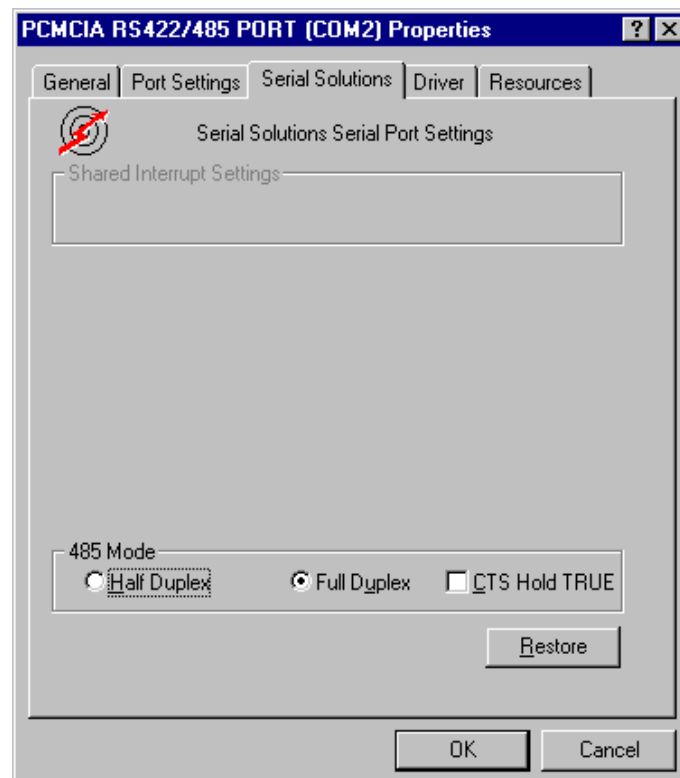
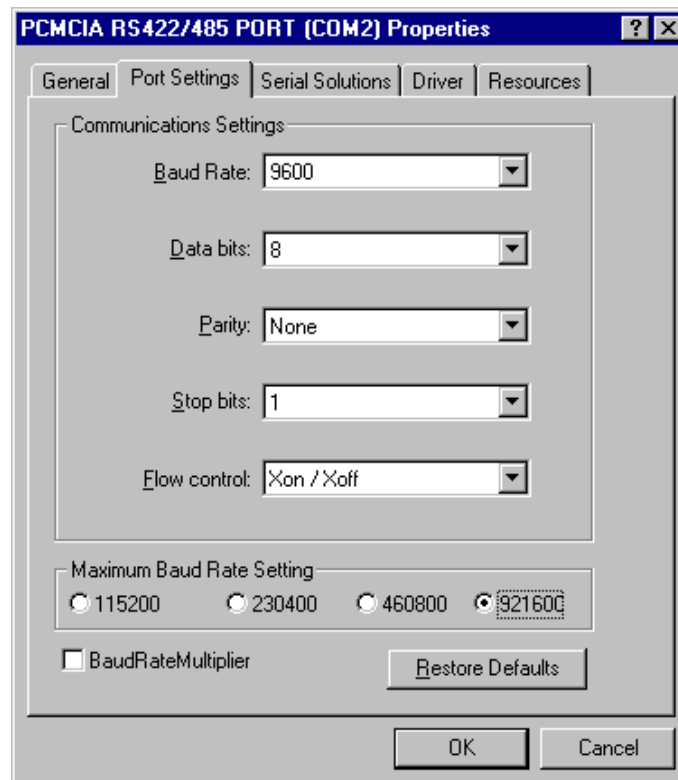
Open Device Manager by going to Control Panel and then System. The card is installed under Multifunction Adapters and Ports:



3.2. Changing Properties

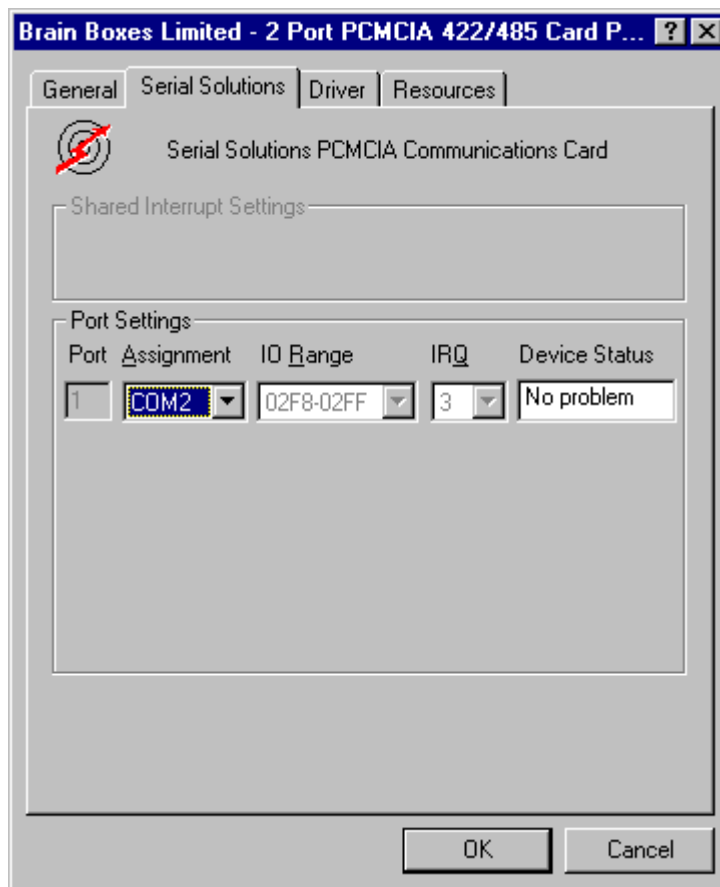
To change any of the settings for one of the ports, select the port under the Ports section in Device Manager (Control Panel/System), right click, select Properties and then select the Port Settings or Serial Solutions tabs from the properties window that appears:

Select the 921600 radio button on the Port Settings screen:



3.3. Changing the COM labels

To change the COM label for one of the ports, select the port under the Multifunction Adapter section in Device Manager (Control Panel/System), right click, select Properties and then select the Serial Solutions tabs from the properties window that appears:

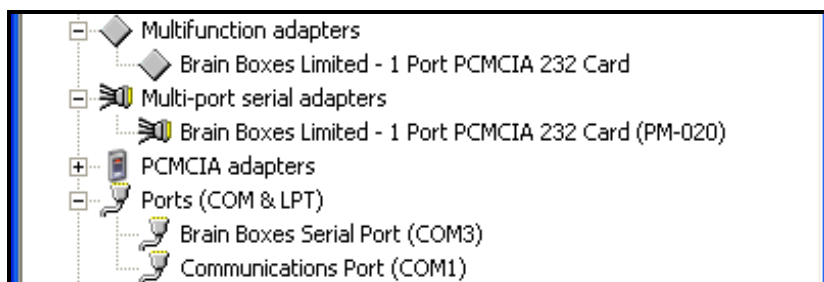


The COM label can be changed from the drop down box underneath the 'Assignment' title.

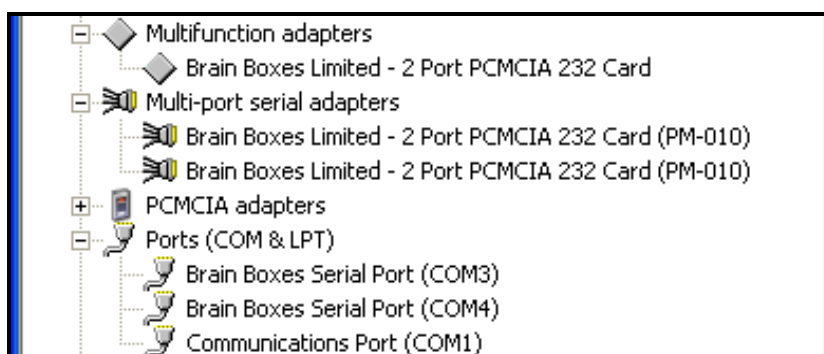
Appendix A

Device Manager in Windows XP

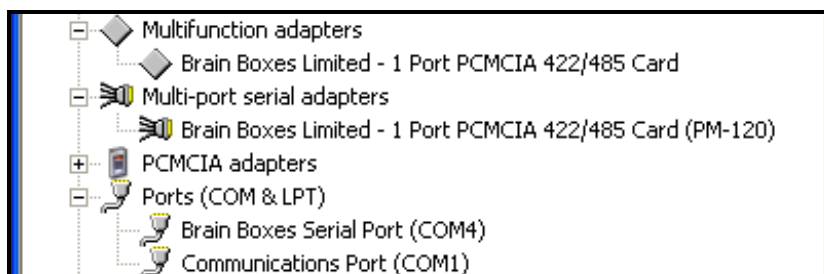
PM-020



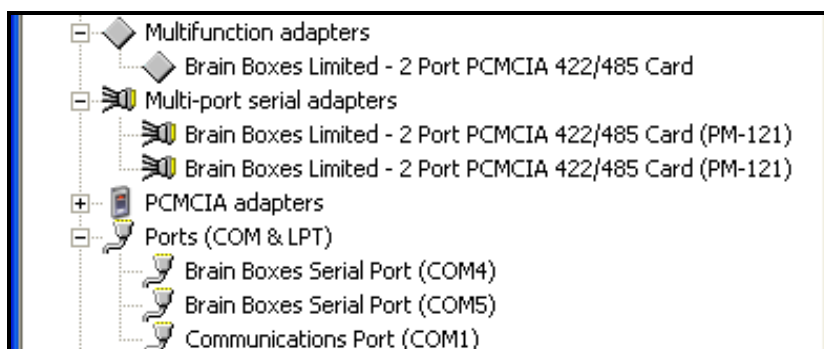
PM-010



PM-120

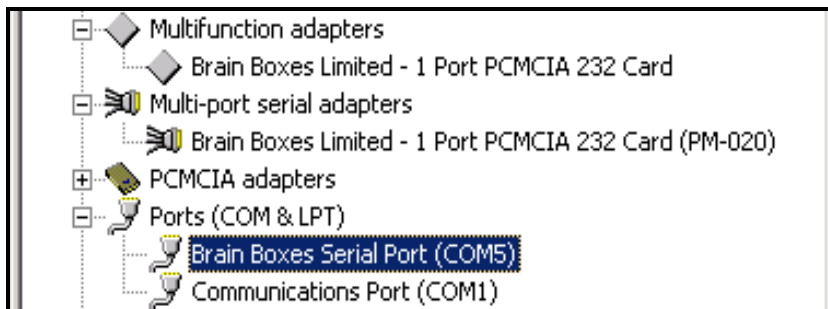


PM-121

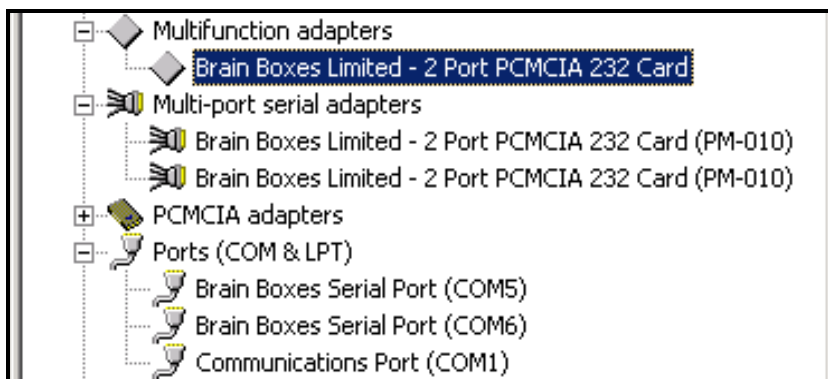


Device Manager in Windows 2000

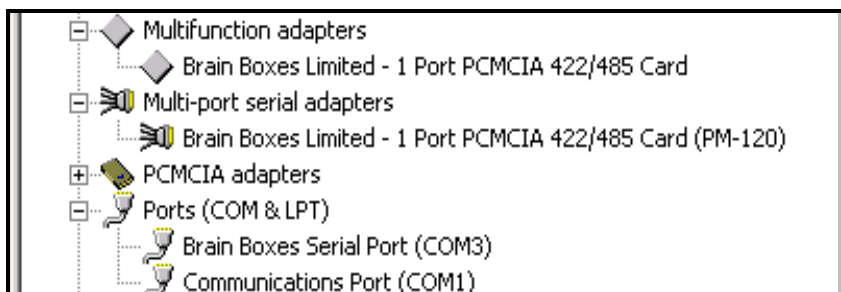
PM-020



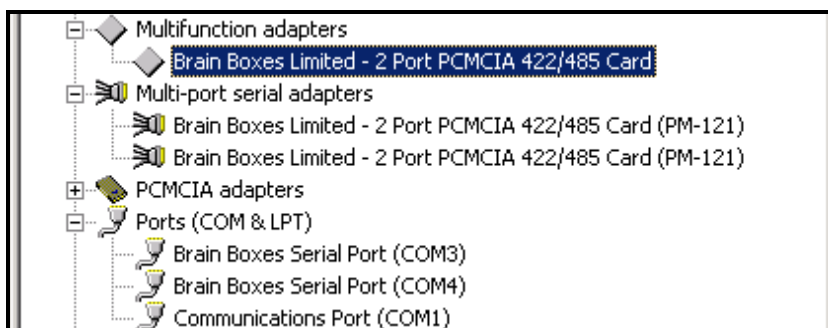
PM-010



PM-120

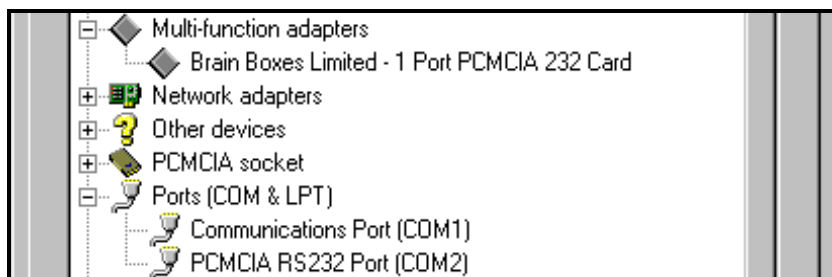


PM-121

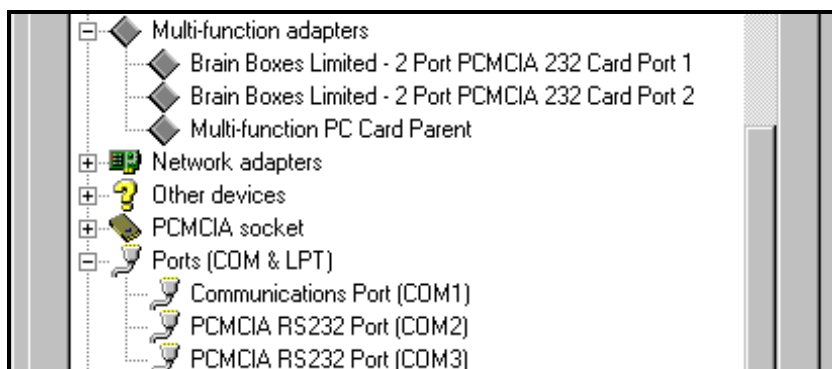


Device Manager in Windows 98

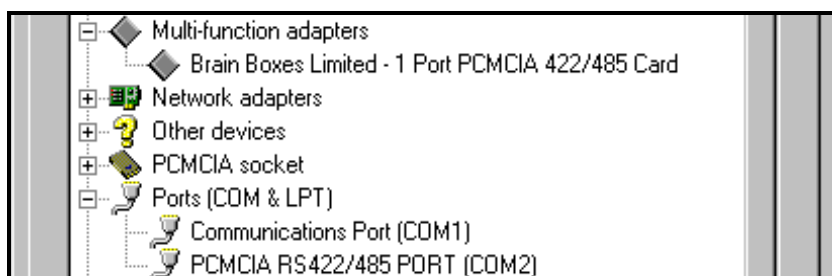
PM-020



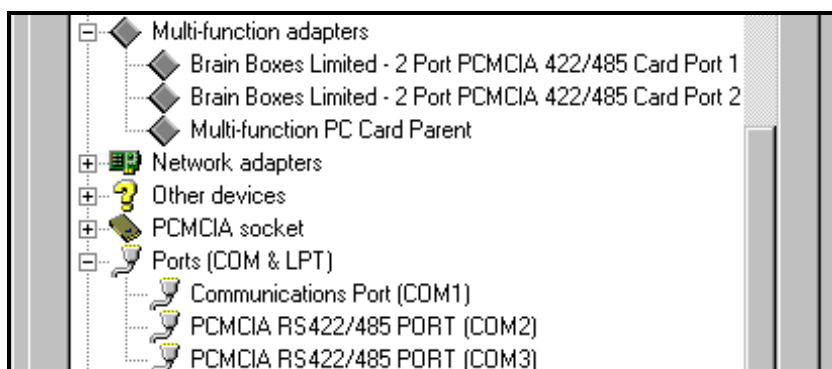
PM-010



PM-120



PM-121



Version History

Version	Date	Author	Checked By	Comments
1.0	24/07/2003	Michelle Roberts		Initial Version