

# Accessories Multimode Relay MT

and similar design: octal / undecal



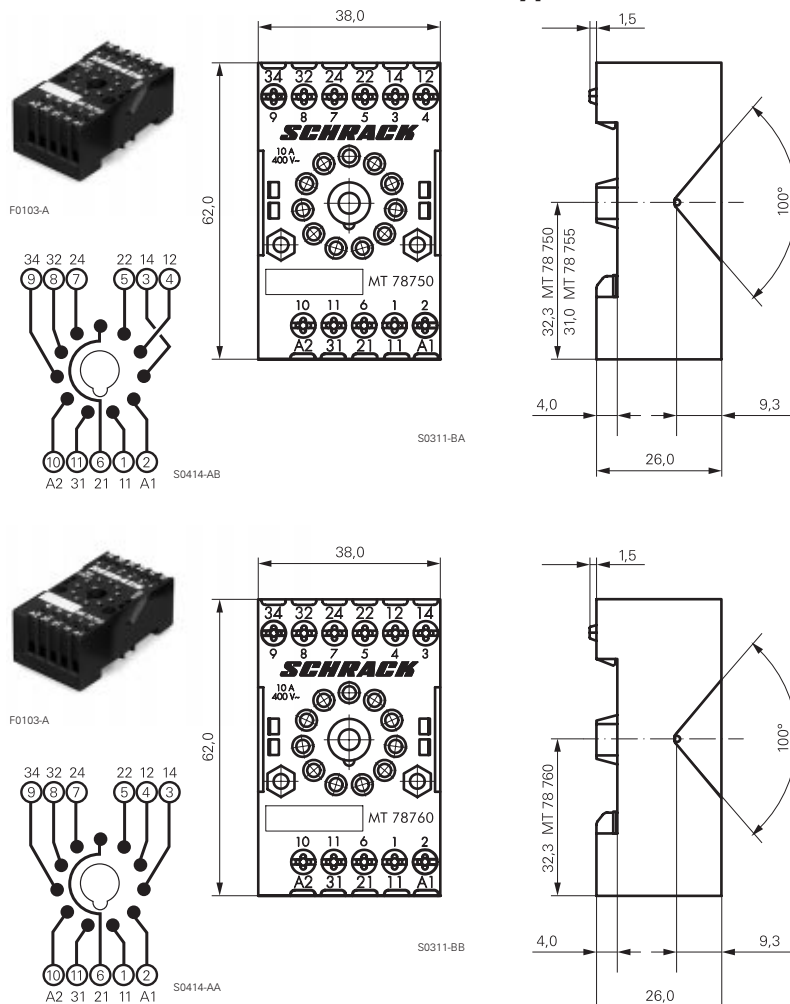
F0235-A

## Features

- Snap-on mounting on DIN-rail
- Screw mounting
- Pozidrive screws with rising clamp terminals
- Logical layout of input/output connections
- White marking area

Dimensions in mm

## MT DIN-rail sockets with screw-type terminals



F0103-A

S0311-BA

S0414-AB

F0103-A

S0311-BB

S0414-AA

**MT 78 750** MT3 DIN-rail socket with screw-type terminals 11 pole

**MT 78 755** MT2 DIN-rail socket with screw-type terminals 8 pole



### Technical data

Rated current	10 A
Rated voltage	400 Vac
Dielectric strength coil/cont.	>3500 V <sub>rms</sub>
Insulation cat. (VDE 0110b)	C / 400 Vac
Tracking resistance	CTI 300
Ambient temperature	+80 °C
Protection category	IP 20
Protection against accidental contact meets	VBG 4
Mounting	DIN 50024 / 22
Wire cross section	2 x 2.5 mm <sup>2</sup>
Terminal torque	0.8 Nm
max.	1.0 Nm
Packaging unit	25 pcs.

**MT 78 760** MT3 DIN-rail socket with screw-type terminals 11 pole



### Technical data

Rated current	10 A
Rated voltage	400 Vac
Dielectric strength coil/cont.	>3500 V <sub>rms</sub>
Insulation cat. (VDE 0110b)	C / 400 Vac
Tracking resistance	CTI 300
Ambient temperature	+80 °C
Protection category	IP 20
Protection against accidental contact meets	VBG 4
Mounting	DIN 50024 / 22
Wire cross section	2 x 2.5 mm <sup>2</sup>
Terminal torque	0.8 Nm
max.	1.0 Nm
Packaging unit	25 pcs.

### DIN-rail sockets with screw-type terminals

Type		Part Number
<b>MT 78 750</b>	MT3 DIN-rail socket with screw-type terminals 11 pole	0-1415035-1
<b>MT 78 755</b>	MT2 DIN-rail socket with screw-type terminals 8 pole	3-1415035-1
<b>MT 78 760</b>	MT3 DIN-rail socket with screw-type terminals 11 pole	8-1415034-1

### Accessories for MT 78 750, MT 78 755, MT 78 760

<b>MT 28 800</b>	Metal retaining clip MT	8-1393163-0
------------------	-------------------------	-------------

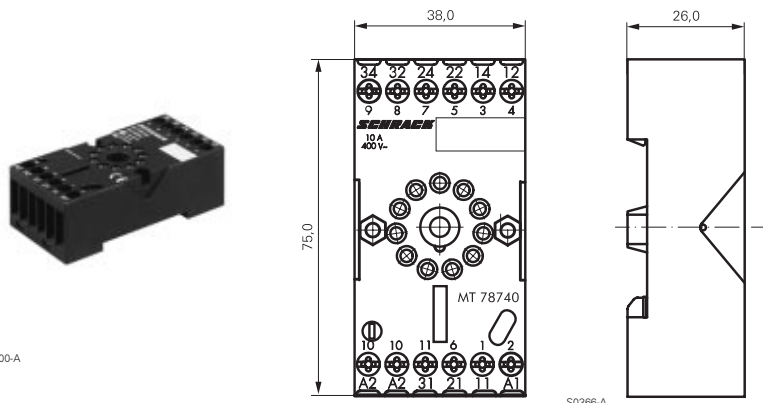
# Accessories Multimode Relay MT

and similar design: octal / undecal

Dimensions in mm

**MT 78 740** MT3 DIN-rail socket with screw-type terminals 11 pole

**MT 78 745** MT2 DIN-rail socket with screw-type terminals 8 pole



## Technical Data

Rated current	10 A
Rated voltage	400 Vac
Dielectric strength coil/cont.	>3000 V <sub>eff</sub>
Ambient temperature	+80 °C
Protection category	IP 20
Protection against accidental contact meets	VBG 4
Mounting/DIN rail	DIN50022
Wire cross section	2 x 2,5mm <sup>2</sup>
Terminal torque	0.8 Nm
Packaging unit	10 Stk.

## DIN-rail socket with screw-type terminals

Type		Part Number
<b>MT78 740</b>	DIN-rail socket with screw-type terminals, 11 pole	8-1393163-3
<b>MT78 745</b>	DIN-rail socket with screw-type terminals, 8 pole	8-1393163-4

## Socket system MT 78 740 and MT 78 745

- 8/11 pin socket for MT2 / MT3
- Double A2 screw for simple further connection of coil supply

## Accessories for MT 78 740, MT 78 745

Type		Part Number
<b>MT 28 800</b>	Metal retaining clip MT	8-1393163-0

## LED and Protection modules for MT 78 740, MT 78 745

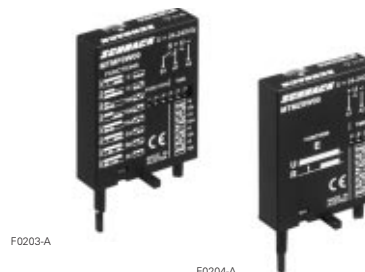
Type		Part Number
<b>MTM T0 0A0</b>	Protection diode 1N4007	7-1393163-6
<b>MTM U0 524</b>	RC-network 6...24 Vac	7-1393163-7
<b>MTM U0 730</b>	RC-network 110...230 Vac	7-1393163-8

## LED

<b>MTM L0 024</b>	red LED 24 Vac / Vdc	7-1393163-4
<b>MTM G0 024</b>	green LED 24 Vac / Vdc	6-1419149-6
<b>MTM L0 730</b>	red LED 110...230 Vac / Vdc	7-1393163-5
<b>MTM G0 730</b>	green LED 110...230 Vac / Vdc	6-1419149-7

## Function modules for MT 78 740, MT 78 745

Type		Part Number
<b>MTM Z0 W00</b>	Delay ON	7-1393163-9
<b>MTM F0 W00</b>	Multifunction	7-1393163-3











## Technical data - Function modules

Nominal voltage	24...240 Vdc / Vac
Mains frequency	48...63 Hz
Precision of time setting	± 0,5 %
Readiness for repetition	≤ 0,5 % or 5 ms
Influence of temperature	≤ 0,1 %/°C
Time range switchable	0,05s...240h in 8 ranges
Ambient temperature	-25...+55 °C

# Accessories Multimode Relay MT

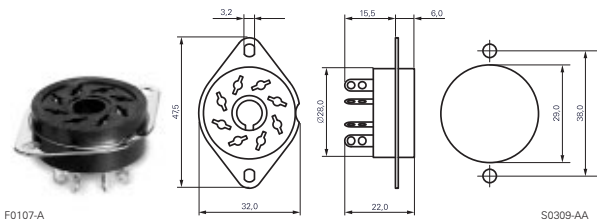
and similar design: octal / undecal

Dimensions in mm  
View on solder pins

Function modules for MT 78 740, MT 78 745	
Function	
Delay ON	U/t 
Delay OFF	U/t 
single shot leading edge	U/t 
single shot trailing edge	U/t 
Delay ON triggered by signal contact	U/t 
single shot	U/t 
flasher starting with pause	U/t 
flasher starting with pulse	U/t 

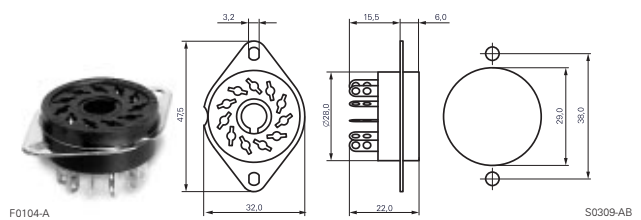
## MT 78 612

Socket 8 pole with solder terminals



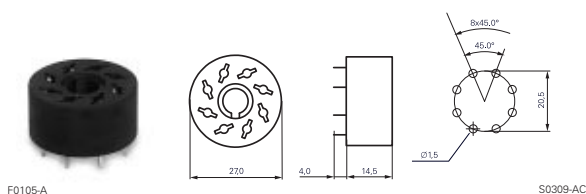
## MT 78 613

Socket 11 pole with solder terminals



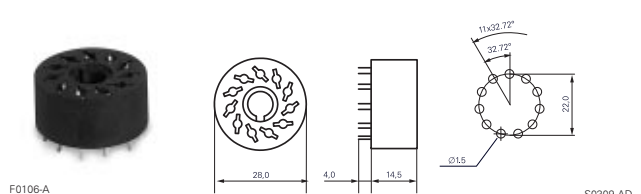
## MT 78 602

Socket 8 pole with PCB terminals



## MT 78 603

Socket 11 pole with PCB terminals



### Sockets with solder and PCB terminals

Type	Part Number
<b>MT 78 612</b> Socket 8 pole with solder terminals	7-1415043-1
<b>MT 78 613</b> Socket 11 pole with solder terminals	8-1415043-1
<b>MT 78 602</b> Socket 8 pole with PCB terminals	9-1415043-1
<b>MT 78 603</b> Socket 11 pole with PCB terminals	0-1415044-1

### Technical data MT78602...MT78613

Rated current 10 A	
Rated voltage	250 Vac
Dielectric strength coil/cont.	>2500 V <sub>rms</sub>
Ambient temperature	-40...+70 °C
Packaging unit	25 pcs