

Features

- Cartridge cylinder with threaded rod
- Several usage possibility: with angular bracket or directly integrated into the machine
- Max operating pressure 8 bar
- Working temperature 0 °C ÷ +80 °C
- No-threaded piston rod

RS PRO Pneumatic Piston Rod Cylinder

RS PRO CA series



RS PRO is the own brand of RS. The RS PRO Seal of Approval is your assurance of professional quality, a guarantee that every part is rigorously tested, inspected, and audited against demanding standards. Making RS PRO the Smart Choice for our customers.

Product Description

- * Cartridge cylinders have extremely reduced dimensions
- * Thanks to the threaded body it can be installed in any part of the machine
- * The air sealing between threaded hole and cylinder is done through the usage of an o-ring.

General Specifications

Manufacturer Series	RS PRO CA
Action	Single acting

Mechanical Specifications

Stroke	5mm
Bore	6mm
Length	27.5mm
Piston Rod Thread Gender	Male
Maximum Operating Pressure	8 bar
Working Pressure Range	2-7 bar
Working Temperature	0 °C ÷ +80 °C
Absolute Maximum Pressure	8 bar
Cushioning Type	Elastomer
Pneumatic Connection	M5
Diameter	6mm
Port Connection	M5
Width	10mm
Height	10mm

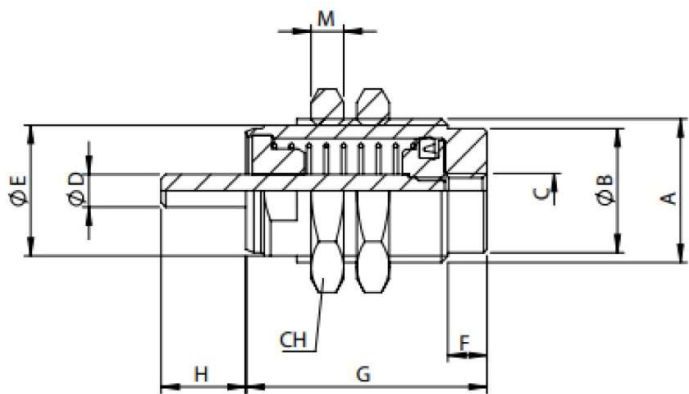
Dimensions	See table below for more details
------------	----------------------------------

Approvals

Declarations	MFR Declaration of Conformity
--------------	-------------------------------

Products within this series

Stock No.	Bore (mm)	Stroke (mm)	Length (mm)	Height (mm)	Width (mm)	Diameter (mm)	Pneumatic Connect. (Port Connection)
0360773	6	5	27,5	10	10	6	M5



Stock No.	ø	A	B	C	D	øE	F	G (stroke)			H	M	CH
								5	10	15			
0360773	6	M10x1	8,5	M5	3	9	5	19,5	26,5	33,5	8	3	14