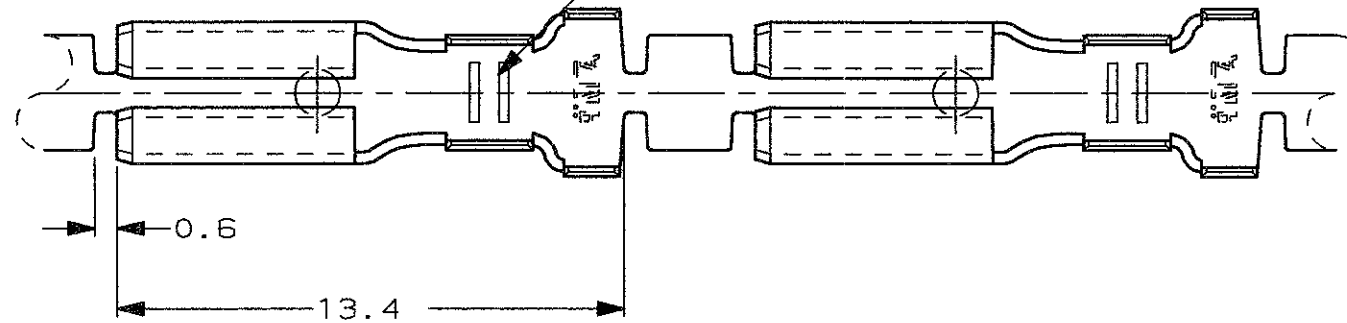


SCALA NON IMPEGNATIVA
(DO NOT SCALE)
DIMENSIONI IN mm
(DIMENSIONS IN mm)

METRIC

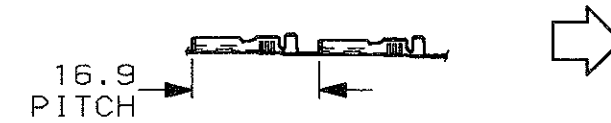
THIRD ANGLE
PROJECTION

115-11-6, 2 SERRATIONS
TOOLMARKS BESIDES SERRATIONS PERMISSIBLE.



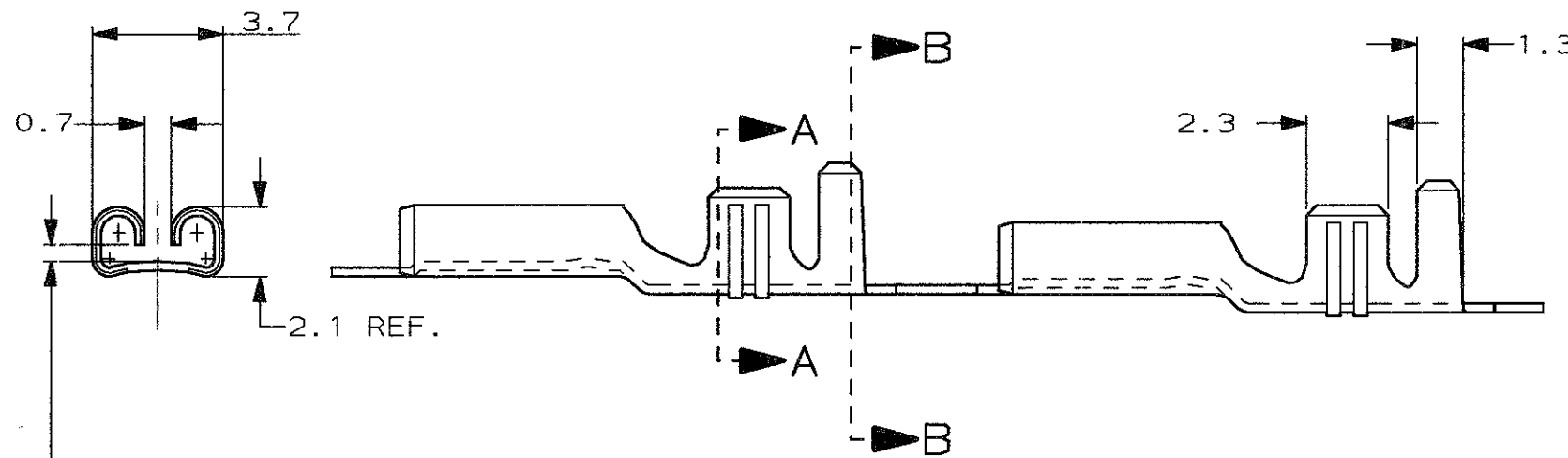
1) STATO DI FORNITURA - SCALA 1:1
(SUPPLY CONDITION - SCALE 1:1)

SENSO DI USCITA
DEL TERMINALE
DALLA BOBINA
(DIRECTION OFF
TOP OF REEL)



2) SPECIFICA DI PRODOTTO 108-20019
(PRODUCT SPEC. 108-20019)

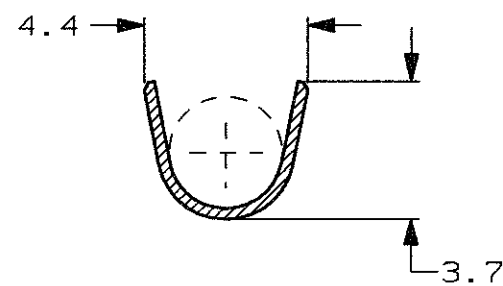
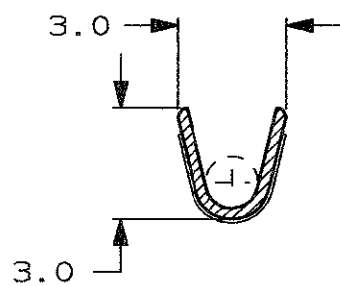
3) PER LE VERSIONI IN PEZZI SCIOLTI
VEDERE DISEGNO 180441
(FOR LOOSE PIECE VERSION SEE DRAWING 180441).



ADATTO PER LINGUETTA
DI 0.5 mm.
(TO FIT TAB 0.5 mm.)

SEZIONE A-A
(SECTION A-A)

SEZIONE B-B
(SECTION B-B)



	PRE-STAGNATO (PRE-TIN PLATED)	OTTONE (BRASS)	180437-2	AG
	NUDO (UNPLATED)	OTTONE (BRASS)	180437-1	AE
NOTE	FINITURA / COLORE (FINISH / COLOUR)	MATERIALE (MATERIAL)	NUMERO (CAMP P/N)	REV.

CUSTOMER DWG. FOR REFERENCE ONLY DISEGNO PER CLIENTE SOLO PER RIFERIMENTO

THIS DRAWING IS UNPUBLISHED RELEASE FOR PUBLICATION 19

© COPYRIGHT 19 BY AMP INCORPORATED, HARRISBURG, PA. ALL INTERNATIONAL RIGHT RESERVED. AMP PRODUCTS MAY BE COVERED BY U.S. AND FOREIGN PATENT AND/OR PATENT PENDING

TOLLERANZE, SE NON DIVERSAMENTE SPECIFICATO (TOLERANCES, UNLESS OTHERWISE SPECIFIED)	DIAM. ISOLANTE (INS. DIA. RANGE)	RANGO FILO (WIRE RANGE) mm ²	SCALA (SCALE)
± 0.4	1.5-2.8	0.5-1.5	5:1

ANGOLI (ANGLES) ± 2°

AMP AMP ITALIA S.p.A.
Corso F.lli Cervi, 15
COLLEGNO (TORINO)

DIS. H. YAALI (DR.) 18 DEC 2000

DESCRIZIONE (DESCRIPTION) FASTON® Connector
.110" sr. REC. CONTACT

AG	REVISED ECR05-8370	AV	22 MAY 2006	CONT. C. TARTARI (CHKO)	LOC.	SIZE	NUMERO (DWG NO)	REV.	FOGLIO (SHEET)
AE	REVISED & REDRAWN ET00-0004-01	H. Y.	08 JAN 01	APP.	I	A3	C-180437	AG	1 DI (OF) 1
REV. (REV. LTR.)	REVISIONI (REVISION RECORD)	DIS. (DR)	DATA (DATE)	APP. (APP.)					

DISTRIBUZIONE (PRINT/DIST.)