

Features

- Built in compliance with the construction and safety S1 specifications of standard EN 837-2
- Are designed for chemical and petrochemical industries and conventional power plants.
- Dial size 100 mm
- IP55
- Bottom connection
- Stainless Steel Case
- AISI 316L st.st. socket and bourdon tube
- Safety glass window
- 1/2" BSP-Male
- Range -1/3 bar

RS PRO Bourdon tube pressure gauges all stainless-steel construction

RS Stock No.: 0180007



RS PRO is the own brand of RS. The RS PRO Seal of Approval is your assurance of professional quality, a guarantee that every part is rigorously tested, inspected, and audited against demanding standards. Making RS PRO the Smart Choice for our customers.

Product Description

Buy this product from www.rspro.com

Page 1 of 3

These instruments are built in compliance with the construction and safety S1 specifications of standard EN 837-2. They are designed for chemical and petrochemical industries and conventional power plants. They are built to resist the most severe conditions created by the process medium and the environment and operate with highly viscous and non-crystallizable fluids. The quality of the materials used to build the sensing element makes them suitable when the process involves high-frequency pulsating pressures. Case filled with a damping fluid offers several advantages, including reduced pointer fluctuation and reduced wear on the rotating parts of the movement during pulsing vibrations and pulsations. Additionally, it prevents condensation and corrosive atmospheres from affecting the case and damaging the internal components of the instrument. TIG welding between the case and the process socket strengthens the instrument and ensures better containment of the damping fluid

General Specifications

Mounting Type	Bottom Entry
Display type	Analogue
Series	RS 1.18.1
Case Material	Stainless Steel
Socket material	AISI 316L
Bourdon tube material	AISI 316L
Window Material	Safety glass window
Ring Material	Stainless steel
Protection Degree	IP55

Mechanical Specifications

Pressure Range	-1 → 3 bar
Working Pressure	100% of FSV for static pressure; 90% of FSV for pulsating pressure
Maximum Pressure Measurement	3 bar
Minimum Pressure Measurement	-1 bar
Connection Size	1/2" BSP Male
Gauge Outside Diameter	100 mm
Over pressure limit (12 hours max)	30% of FSV
Accuracy Class	1 as per EN 837-1
Minimum Operating Temperature	-40°C

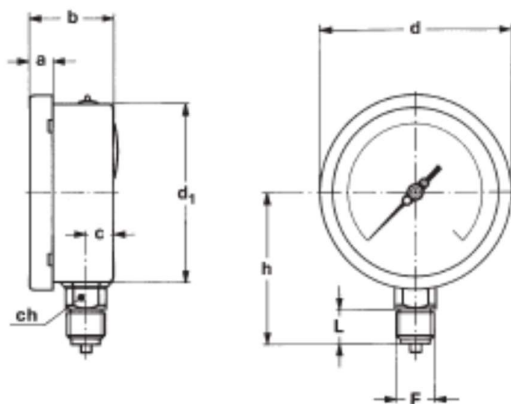
Maximum Operating Temperature	+150°C
Calibrated	No

Approvals

Declarations	Directive 2014/68/EU - Pressure Equipment Directive (PED)
Standards Met	EN 837-1

Technical Specifications and Drawings

Filled Model – Bottom Connection



F	a	b	c	d	d1	h	L	Weight
G ½ A	13	48,5	15	110,5	101	86	20	0,53 kg

Dimensions: mm