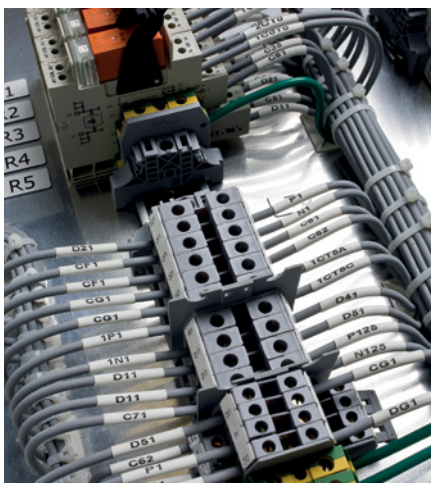


# BBP™12 Label Printer



The BBP™12 Label Printer is an entry level benchtop label printer for cable, component, product and laboratory sample identification that offers great value for money. The **compact** BBP12 offers a high print speed of **100 mm/second** and can handle a **wide range** of highly durable and specialised Brady **identification labels**.

## Printer

Article No.	Order Reference
195569	BBP12-EU+U+LM Pro
195566	BBP12-EU+Unwinder
195570	BBP12-UK+U+LM Pro
195567	BBP12-UK+Unwinder
195571	BBP12-US+U+LM Pro
195568	BBP12-US+Unwinder

## Accessory

Article No.	Order Reference
361064	BBP12/BBP11 Peel & Present

## Printer kits

Article No.	Order Reference
195812	BBP12-LAB Kit-EU
195813	BBP12-LAB Kit-UK
195814	BBP12-LAB Kit-US
195815	BBP12-ELEC Kit-EU
195816	BBP12-ELEC Kit-UK
195817	BBP12-ELEC Kit-US
195818	BBP12-DATA Kit-EU
195819	BBP12-DATA Kit-UK
195820	BBP12-DATA Kit-US

## There are a dozen good reasons to choose the compact benchtop entry level BBP™12 Label Printer:

1. Compact in size, fits on every desk
2. Default Ethernet Connectivity, allowing you to work in a network
3. Connect any universal keyboard via USB 2.0 to work in stand-alone mode
4. Full colour LCD Display and intuitive software interface are simple to use, so no extensive training is required
5. Simple calibration menu with easy 1-2-3 step printing
6. Prints a wide range of identification labels from 10 mm up to 112 mm wide
7. Standard 300 dpi print quality allowing accurate image & barcode positioning on small labels
8. With its powerful 32 bit processor and its extended memory it can print up to 100 mm / sec
9. The printer supports the industry-standard Zebra® and Eltron® programming languages
10. Print time and date on to your labels via the "Real time clock feature"
11. Best price/quality in the market for low volume printing
12. Comes with a free unwinder accessory to print larger label rolls

PRINTER	
Weight	2.50 kg
Dimensions	Size - Depth: 258 mm Size - Height: 173 mm Size - Width: 202 mm
Max. Print Width (mm)	105.60 mm
Mode of operation	Stand-Alone with external keyboard & Peripheral

DISPLAY	
Display Type	Full colour LCD display
Display Resolution	300 dpi

MATERIALS SUPPORTED	
Materials	Nylon Cloth, Paper, Polyester, Polyethylene, Polyimide, Polyolefin (Sleeves), Polypropylene, Thermoplastic polyetherpolyurethane, Vinyl, Vinyl Cloth, Outdoor Vinyl, Self-laminating Vinyl

BARCODES	
Barcode Type	2D and 1D (Linear)

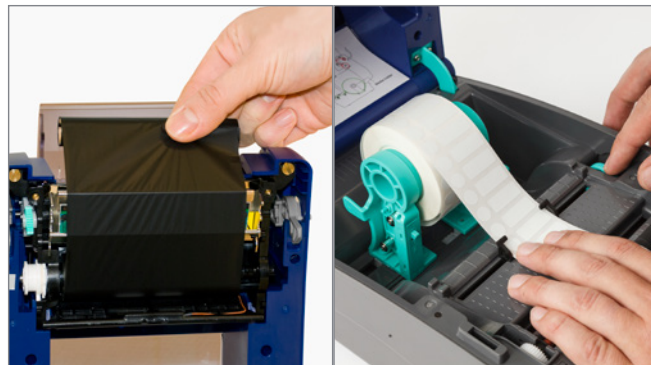
SOFTWARE & CONNECTIVITY	
Connectivity	Serial, USB 2.0, Ethernet
Software Compatibility	LabelMark, CodeSoft, Windows® based driver for 3rd party software

COMPLIANCE	
Approval/Compliance	UL; cUL; CE; RoHS; EAC

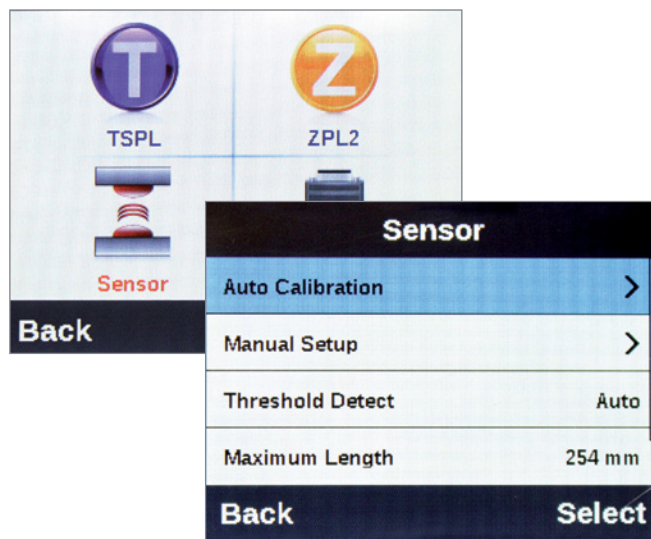


Consult the video of the BBP12 Label Printer on [www.bradyeurope.com/BBP12](http://www.bradyeurope.com/BBP12)

## Ready to print in 1-2-3



Step 1: Insert media



Step 2: Calibrate via Full Colour LCD Display



Step 3: Print

### Brady EMEA Locations

Africa	+27 11 704 3295	Middle East	+971 4881 2524
Benelux	+32 (0) 52 45 78 11	Norway	+47 21 99 97 76
Central & Eastern Europe	+421 2 3300 4800	Romania	+40 21 202 3032
Denmark	+45 66 14 44 00	Russia	+7 495 225 93 62
France	+33 (0) 3 20 76 94 48	Spain & Portugal	+34 900 902 993
Germany	+49 (0) 6103 7598 660	Sweden	+46 (0)8 505 988 31
Hungary	+36 23 500 275	Turkey	+90 212 264 02 20
Italy	+39 02 26 00 00 22	UK & Ireland	+44 (0) 1295 228 288

### Your Brady Distributor

