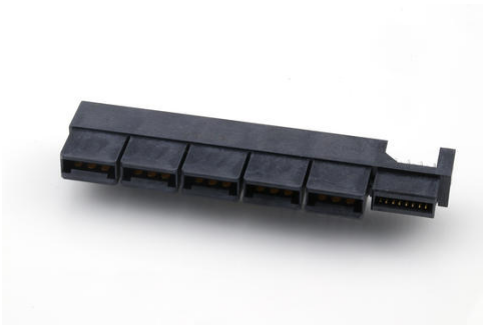




**Part Number :** [459840007](#)  
**Product Description :** EXTreme LPHPower  
Receptacle Header Reverse Orientation, Right-Angle,  
10 Power, 16 Signal Contacts, Select Gold (Au) Plating,  
for 2.36mm Thick PC Board  
**Series Number :** 45984  
**Status :** Active  
**Product Category :** Board-to-Board Connectors



## Documents & Resources

### Drawings

[459840007 sd.pdf](#)

### 3D Models and Design Files

[STEP AP242](#)

[SOLIDWORKS](#)

[Creo](#)

[Symbol and Footprint \(Multi-Format\)](#)


[SYM-45984-0007-001.zip](#)

### Specifications

[PS-45984-001-001.pdf](#)

## Product Environment Compliance

### Compliance

GADSL/IMDS	Compliant with Exemption 44; 34; 33
China RoHS	 per SJ/T 11365-2006
EU ELV	Not Relevant
Low-Halogen Status	Low-Halogen per IEC 61249-2-21
REACH SVHC	Not Contained per D(2025)4165-DC (25 June 2025)
EU RoHS	Compliant per EU 2015/863

## Compliance Statements

- EU RoHS
- REACH SVHC
- Low-Halogen

## Industry Documents

- IPC 1752A Class C
- IPC 1752A Class D
- Molex Product Compliance Declaration
- IEC-62474
- chemSHERPA (xml)

## Substances of Interest

- PFAS

## EU RoHS Certificate of Compliance

## Additional Product Compliance Information

---

## Part Details

### General

Status	Active
Category	Board-to-Board Connectors
Series	45984
Description	EXTreme LPHPower Receptacle Header Reverse Orientation, Right-Angle, 10 Power, 16 Signal Contacts, Select Gold (Au) Plating, for 2.36mm Thick PC Board
Application	Board-to-Board, Power, Signal
Component Type	PCB Receptacle
Product Name	EXTreme LPHPower
UPC	884982166134

### Agency

CSA	LR19980
UL	E29179

### Electrical

Current - Maximum per Contact	1.0A
Grounding to PCB	No
Voltage - Maximum	250V AC (RMS)/DC (Power), 30V DC

	(Signal)
--	----------

## Physical

Circuits (Loaded)	26
Circuits (maximum)	26
Color - Resin	Black
Durability (mating cycles max)	250
Flammability	94V-0
Glow-Wire Capable	No
Guide to Mating Part	No
Keying to Mating Part	None
Lock to Mating Part	None
Material - Metal	High Performance Alloy (HPA)
Material - Plating Mating	Gold
Material - Plating Termination	Tin
Material - Resin	High Temperature Thermoplastic
Net Weight	13.969/g
Number of Rows	2
Orientation	Right Angle
Packaging Type	Tray
PCB Locator	No
PCB Retention	None
PCB Thickness - Recommended	2.36mm
PC Tail Length	3.60mm
Pitch - Mating Interface	12.00mm, 1.27mm
Pitch - Termination Interface	2.00mm, 2.50mm, 1.27mm
Plating min - Mating	0.762µm
Plating min - Termination	3.810µm
Polarized to Mating Part	Yes
Polarized to PCB	Yes
(p)ower-(s)ignal Configuration	10p - 16s
Stackable	No
Temperature Range - Operating	-40° to +105°C
Termination Interface Style	Through Hole

**Solder Process Data**

Max-Duration	20
Lead-Free Process Capability	WAVE
Max-Cycle	3
Max-Temp	260

---

**Mates With / Use With**

**Mates with Part(s)**

Description	Part Number
EXTreme LPHPower Right-Angle Plugs	<u>45985</u>
Mates With	1.57mm Card Edge