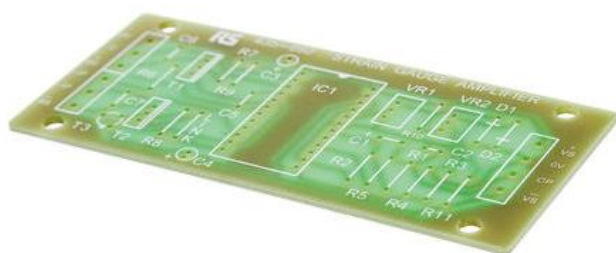


## Datasheet

Stock No: 435-692

# RS Pro Strain gauge amplifier PCB, 46x98mm



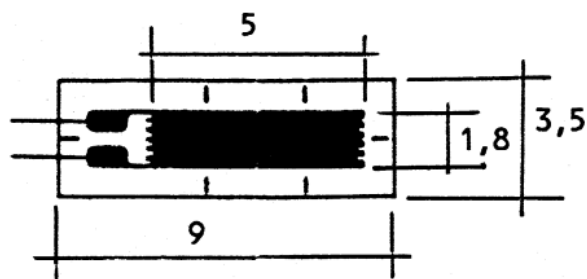
## Product Details

### Strain Gauge Amp PCB

A single side glass fibre solder masked PCB for use with the RS strain gauge amplifier  
Supplied with component overlay and instructions with full parts list and circuit details

### Note

Electronic circuit experience required to setup and use. Designed for prototype applications.



## Specifications: