

## FEATURES

- Energy saving compact design
- Energy Efficiency Level VI compliant
- Regulated output
- Approved to cETLus, TUV-GS, RCM (C-Tick), CB, FCC, CE, RoHS & REACH Standards
- IEC C14 input connector

## RS PRO 36V dc CCTV Power Supply, 0 → 4.16A, 3-Pin IEC Connector

RS Stock No.: 144-0994



RS Professionally Approved Products bring to you professional quality parts across all product categories. Our product range has been tested by engineers and provides a comparable quality to the leading brands without paying a premium price.

## Product Description

From the trusted brand RS PRO, comes a high-quality 36V power supply. This switch mode power supply has a wide input voltage range of 85 to 264V AC and an efficiency of up to 80% that is suitable for many power applications. As part of our RS Pro line of DC desktop power supplies, you are ensured a reliable & robust power supply solution. This DC unit comes equipped with over voltage, over current & short circuit protection.

## General Specifications

<b>Input Connector</b>	IEC C14
<b>Input Plug Type</b>	3-Pin IEC
<b>Output Connection Type</b>	2.1 x 5.5 mm Connector
<b>Number of Outputs</b>	1
<b>Energy Efficiency Level</b>	VI
<b>MTBF</b>	50,000hours at 25°C
<b>Cable Length</b>	1500mm
<b>Applications</b>	Commercial IT equipment, Networking and peripherals, Gaming machines, CCTV cameras

## Electrical Specifications

Input Specifications	
<b>Rated Input Voltage</b>	100V to 240V ac
<b>Full Input Voltage Range</b>	90V to 264V ac
<b>Rated Frequency</b>	50Hz to 60Hz
<b>Full Frequency Range</b>	47Hz to 63Hz
<b>Efficiency</b>	88%
<b>Input Current (RMS Max.)</b>	2.5A
<b>Inrush Current</b>	80A at 100-240Vac
<b>Leakage Current (max.)</b>	3.5mAmax. at 264Vac

Output Specification	
Line Regulation	±3.0%
Load Regulation	±5.0%
No Load Power Consumption	<0.21W
Hold Up Time (Typ.)	5ms @ 115V ac at full load
Overload Protection	Hiccup mode, recovers automatically after fault condition is removed
Over Voltage Protection	Shut down o/p voltage, re-power on to recover
Short Circuit Protection	Yes

### Mechanical Specifications

Overall Dimensions	173mm x 71mm x 37mm
Overall Length	173mm
Overall Depth	71mm
Overall Width	71mm

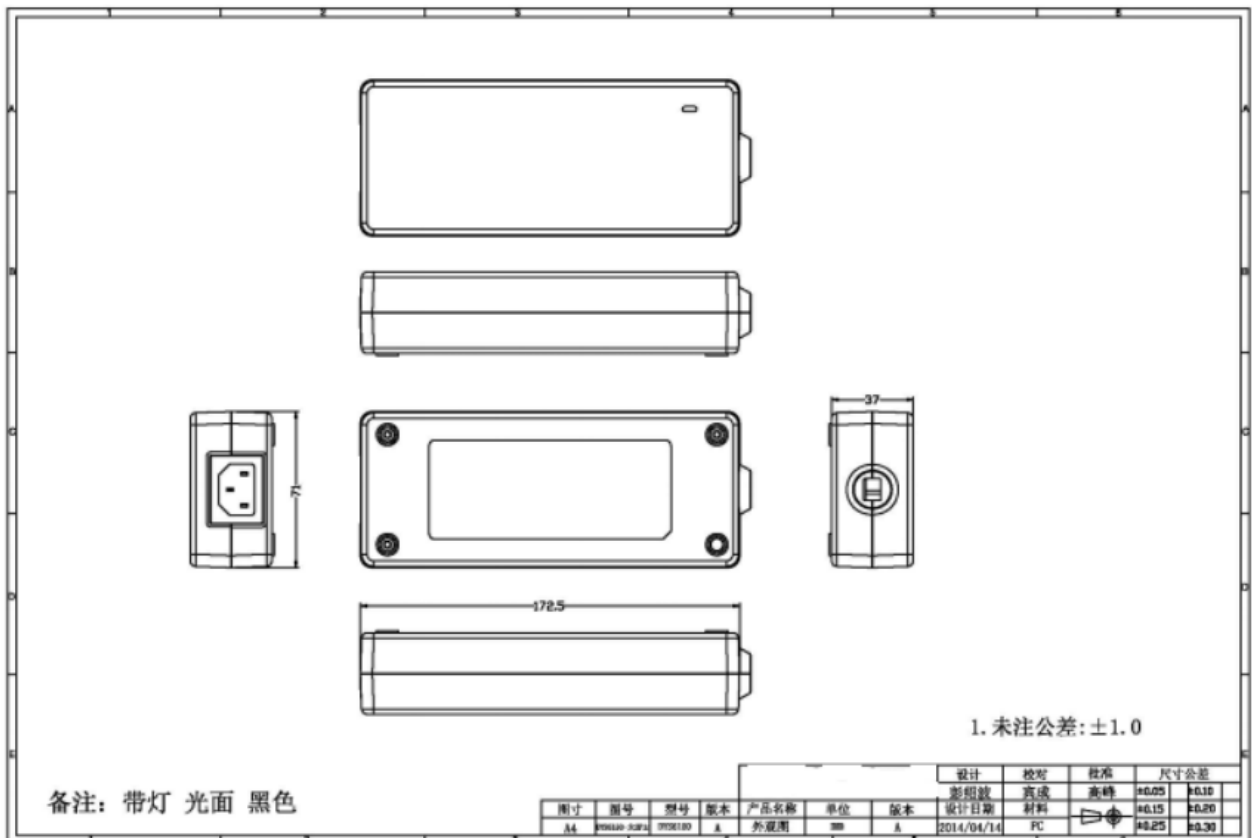
### Operation Environment Specifications

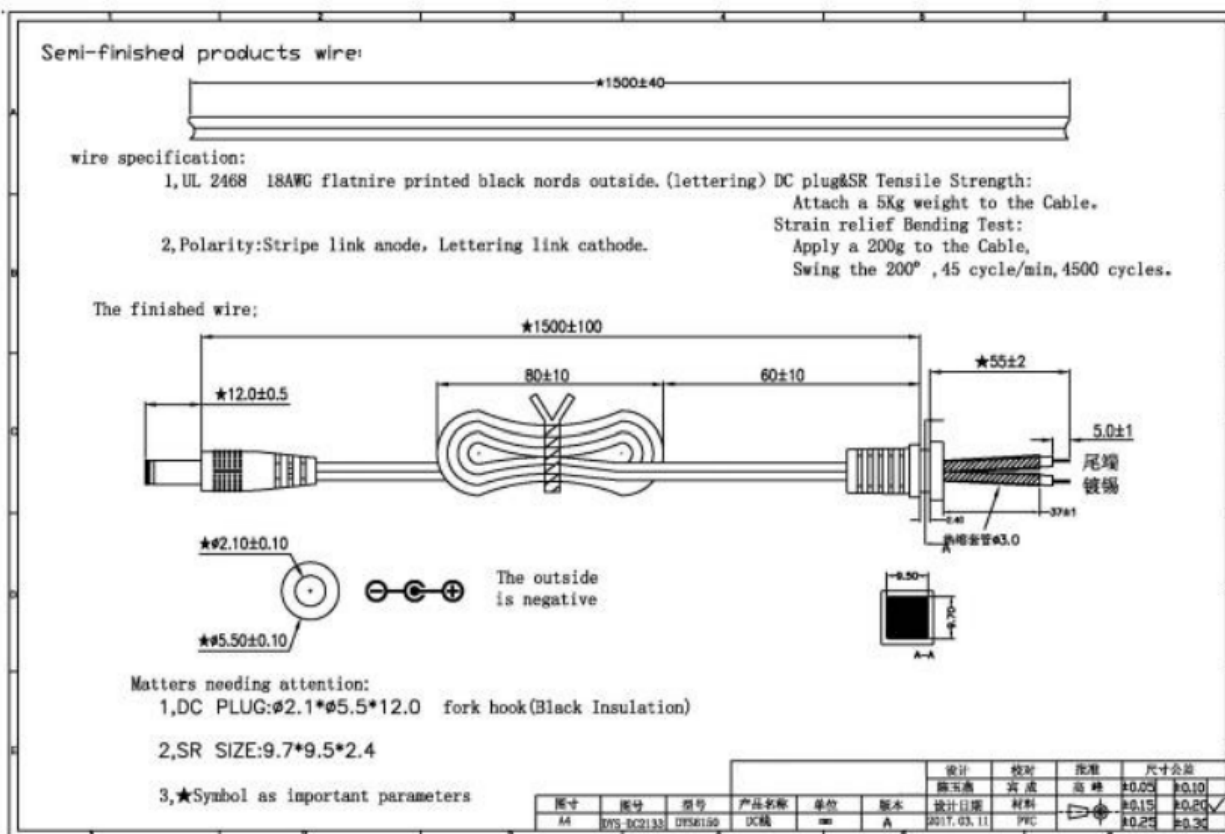
Operating Humidity	10% to 90% RH non-condensing
Operating Temperature Range	0°C to 45°C
Storage Temperature Range	-20°C to 80°C
Vibration Resistance	10 to 300Hz sweep at a constant acceleration of 1.0G(Breadth: 3.5mm) for 1Hour for each of the perpendicular axes X, Y, Z

### Approvals

Safety Standard	UL60950-1, CSA C22.2 NO.60950-1, IEC60950-1, EN60950-1, AS/NZS 60950.1
-----------------	--

# Desktop Power Supplies





RS stock No.: 144-0994  
P/N: DYS6150-3600416-17520  
MODEL: DYS6150-3600416P  
INPUT: 100-240V ~ 50/60Hz 2.5A MAX  
OUTPUT: 36.0V = 4.16A

Dongguan Dongsong Electronic Co., Ltd  
MADE IN CHINA

## SWITCHING MODE POWER SUPPLY

EFFICIENCY LEVEL: VI

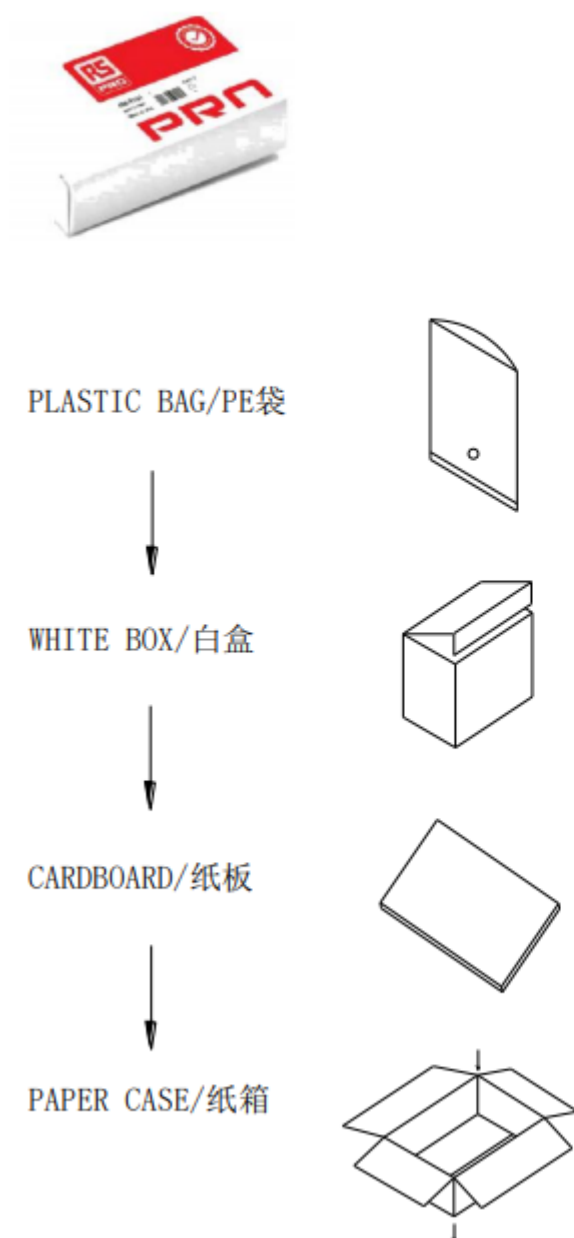
**CAUTION**  
RISK OF ELECTRIC SHOCK  
DO NOT OPEN

AVIS: RISQUE DE CHOC ÉLECTRIQUE-NE PAS OUVRIR

Intertek  
4002961  
CONFORMS TO  
UL STD. 60950-1  
CERTIFIED TO  
CSA STD.  
C22.2 No. 60950-1

3317

## Package Drawing/包装示意图:



## MECHANICAL DIMENSION:

	L(mm)	W(mm)	H(mm)
PLASTIC BAG	330	150	
WHITE BOX	230	130	55
CARDBOARD	470	285	
PAPER CASE	480	295	300

## PACKING METHOD:

PACKING METHOD	5PCS/LAYER *4LAYERS
QTY	20PCS
N.G	7.8Kg
G.W	9.5Kg