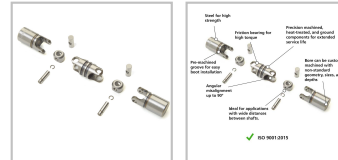
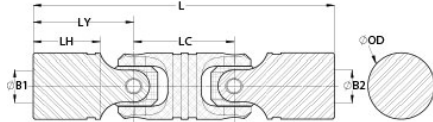




## UD24-XX-XX-F-KIT

Ruland UD24-XX-XX-F-KIT, Machinable Bore Double Universal Joint Kit, Friction Bearing, Steel, 1.495" (38.0mm) OD, 6.563" (166.7mm) Length




### Description

Ruland UD24-XX-XX-F-KIT is a double cardan friction bearing universal joint kit that can be machined with a bore size and geometry of the user's choice. It has a 1.495" (38.0mm) OD and 6.563" (166.7mm) length. UD24-XX-XX-F-KIT is ideal for applications with wide distances between shafts and can accommodate all forms of misalignment. This plain bearing double universal joint is comprised of pins and blocks that are precision machined, selectively heat treated, and ground for high strength, accuracy, and wear resistance. The combination of these components with precision ground and hardened yoke ears allow for a longer lifespan, increased performance in demanding applications, and greater angular misalignment of up to 90° when compared to commodity style double universal joints. UD24-XX-XX-F-KIT is made from high grade alloy steel for durability and high strength. It can be combined with boot UBOOT24/38-NI-KIT to protect the joints from unwanted contaminants such as dust or water and self lubricate reducing maintenance time. This double cardan universal joint is manufactured in the USA by Belden Universal for strict control of processes.

### Product Specifications

<b>Bore (B1)</b>	No Bore	<b>Small Bore (B2)</b>	No Bore
<b>B1 Max Shaft Penetration</b>	1.400 in (35.6 mm)	<b>B2 Max Shaft Penetration</b>	1.400 in (35.6 mm)
<b>Joint Outer Diameter (OD)</b>	1.495 in (38.0 mm)	<b>Length (L)</b>	6.563 in (166.7 mm)
<b>Center Yoke Length (LC)</b>	2.313 in (58.8 mm)	<b>Yoke Length (LY)</b>	2.125 in (54.0 mm)
<b>Hub Depth (LH)</b>	1.400 in (35.6 mm)	<b>Max Round Bore (Inch)</b>	0.875 in
<b>Max Round Bore (Metric)</b>	22 mm	<b>Max Hex or Square Bore (Inch)</b>	0.7500 in
<b>Max Hex or Square Bore (Metric)</b>	20 mm	<b>Max Blind Bore (Inch)</b>	1.2500 in
<b>Max Blind Bore (Metric)</b>	31 mm	<b>Max Round Bore w/ Key (Inch)</b>	7/8" Bore, 3/16" Keyway
<b>Max Round Bore w/ Key (Metric)</b>	22mm Bore, 6mm Keyway	<b>Peak Torque</b>	9000 in-lb (1016.9 Nm)
<b>Rated Torque</b>	1,800 in-lb (203.4 Nm)	<b>Max Operating Angle</b>	90°
<b>Material Specification</b>	Alloy Steel	<b>Manufacturer</b>	Belden Universal
<b>Country of Origin</b>	USA	<b>Weight (lbs)</b>	2.681000
<b>Recommended Lubricant</b>	LUBRIPLATE No. 1200-2	<b>Matching Boot Cover</b>	<a href="#">UBOOT24/38-NI-KIT</a>
<b>UPC</b>	634529288597	<b>Tariff Code</b>	8483.60.4000
<b>UNSPC</b>	25173810		

**Note 1** Performance ratings are for guidance only. The user must determine suitability for a particular application.

**Prop 65**  **WARNING** This product can expose you to the chemical Ethylene Thiourea, known to the State of California to cause cancer and birth defects or other reproductive harm. For more information go to [www.P65Warnings.ca.gov](http://www.P65Warnings.ca.gov).