

# OLYMPUS

THE VISIBLE DIFFERENCE

## CAMEDIA

C-2100 Ultra Zoom  
Digital Compact Zoom Camera

NEW

**POWERFUL 10X OPTICAL ZOOM WITH 2.1 MEGAPIXELS**



### Super-Fine 2.1 Megapixel CCD

The super-fine 2.1 megapixel CCD offers superior image quality. Image sizes can be selected as you require, from the highest TIFF (1600x1200 pixels) to SQ (640x480 pixels).

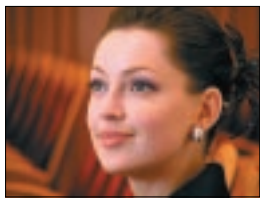


Image Taken with the CAMEDIA C-2100 Ultra Zoom (1600x1200 Pixels/TIFF)

### Light Metering Systems

Digital ESP (Electro-Selective Pattern) light metering sets the appropriate exposure even under difficult lighting conditions. Centre-weighted average light metering, and Spot light metering allowing up to 8 different multi-spot readings, are also available.

### S-Program & a Variety of Other Exposure Modes

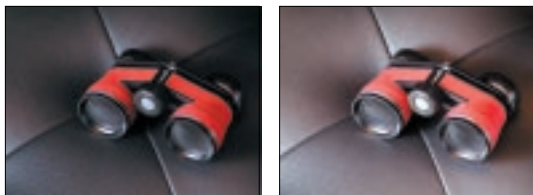


S-Program Mode (Portrait)

The S-Program (Scene-Program) modes set the optimum aperture and shutter speeds for situations such as Portrait, Sports, Landscape, or Night Scene. Moreover, Aperture-Priority AE, Shutter-Priority AE, Program AE, and manual exposure are available, as well as AE lock.

### Exposure Compensation & Auto Bracketting

$\pm 2$  compensation in  $1/3$  stops is possible. With Auto Exposure Bracketting, images can be taken sequentially with 3 or 5 different exposures in  $\pm 1/3$ ,  $\pm 2/3$  or  $\pm 1$  stops within  $\pm 2$ . You can then select frames to store or erase.



With Exposure Compensation (-1)

Without Exposure Compensation

### Auto & Preset White Balance Settings

iESP (Intelligent Electro-Selective Pattern) Auto White Balance Setting enables shooting with appropriate white balance. In addition, the white balance can be set manually for daylight, overcast, tungsten, and fluorescent light.

### Auto & Preset Sensitivity Settings

Sensitivity can be set to Auto, as well as approx. ISO100, 200, or 400. ISO400 is appropriate when shooting in low light without a flash or when using a high-speed shutter.

All the sample shots in this catalogue were taken with the CAMEDIA C-2100 Ultra Zoom.

### Sharpness Settings

You can select Normal, Soft, or Hard sharpness. The soft setting is ideal for processing images on a computer.

### Motion JPEG Image & Sound\* Recording

With an optional 16MB SmartMedia card, Motion JPEG Image & Sound recording for up to 42 seconds in HQ mode (320x240 pixels) or 158 seconds in SQ mode (160x120 pixels) is possible.

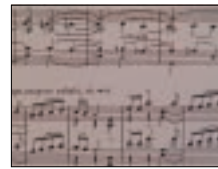
\* Sound is recorded in Wave format.

### Picture Effects

Black & White, Sepia, White Board, or Black Board can be selected, giving you greater control over image style. With White Board and Black Board modes, pictures of letters can be taken extra-clearly.



White Board Mode



Normal Shooting

### Ultra-Slim SmartMedia Cards

Images are saved to up to 64MB SmartMedia cards\*, which are convenient to carry and store. With a provided 8MB card, you can also record up to 82 images in SQ-Normal mode.

\* Optional

### Slide-Show Mode

You can display multiple images one after another on the LCD monitor or on a TV monitor. In addition, you can turn an image 90° clockwise or counter-clockwise, making full displays of vertical images possible.

### Microphone Terminal

With the built-in microphone, you can record up to 4 seconds of sound per still image. In addition, a microphone terminal is available, so you can connect an optional external microphone to the camera.

### Image Transfer to a PC

The CAMEDIA C-2100 Ultra Zoom has a USB terminal for faster image data transfer to a PC equipped with a USB port using the provided software\*. Images can be transferred using the optional USB SmartMedia Reader/Writer, FlashPath, or PC Card Adapter. \* A serial connection is also possible.

### Audio & Video Output

Both image and sound can be output on a TV monitor using the provided AV cable.

### Remote Control Unit

The RM-1 remote control unit is included as standard.





25mm (135mm)



37mm (200mm)



70mm (380mm)



70mm with 2.7X Digital Zoom (1026mm)



# THE CAMEDIA C-2100 Ultra Zoom

## GET 10X CLOSER AND FEEL THE PULSE OF LIFE

Olympus' expertise in optics combined with the maximum force of digital has given birth to a digital camera with an amazingly-powerful 10X optical zoom—the CAMEDIA C-2100 Ultra Zoom.

Strikingly beautiful super-telephoto shots are now ready to be yours.

Thanks to the optical image stabiliser, the influences of camera shaking are reduced to a minimum. It also features a super-fine 2.1 megapixel CCD for overseeing image quality and Scene-Program for fine adjustment to different shooting conditions.

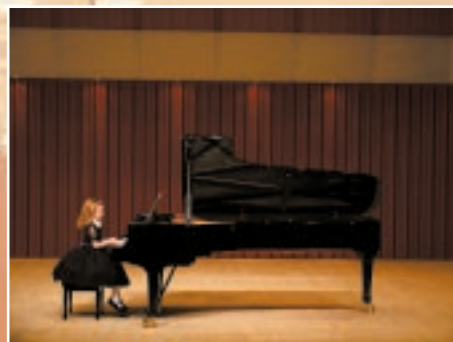
The CAMEDIA C-2100 Ultra Zoom—Get 10X Closer and Feel the Pulse of Life.



7mm (38mm)



9mm (50mm)



16mm (85mm)



25mm



\* The numbers in the brackets show the focal length of a 35mm camera.

## 10X Optical Zoom & Image Stabiliser



Lens Construction

The CAMELIA C-2100 Ultra Zoom features an incredibly sharp and bright F2.8~3.5 10X optical zoom lens with a focal range of 7~70mm\*. Because its zoom system is optical, even during super-telephoto shooting, the quality of images remains crystal-clear. Also, with 2.7X Digital Zoom mode, an astonishing 27X super-telephoto shooting\*\* is possible. With everything powerfully supported by the Olympus exclusive image stabilisation algorithm to minimise the influences of camera shaking, you can take your joy of wide-angle and super-telephoto shooting to the max.

\* Equivalent to 38~380mm on a 35mm camera.

\*\* Equivalent to 1026mm on a 35mm camera. Available in SQ/HQ modes. Images may be grainy in Digital Zoom.

## Accurate Focusing Systems

The Olympus original TTL iESP (Intelligent Electro-Selective Pattern) autofocus system allows quick accurate focusing. In addition, spot autofocus to focus on the centre of the viewfinder and manual focus are available.

## Dynamic Close-Ups

With the Macro mode, you can get as close to the subject as 10cm in Wide or 1m in Tele for dynamic close-ups.

## Various Flash Modes

The Intelligent Variable-Power Flash is built-in, with Auto, Red-Eye Reducing, Fill-In, and Flash Off modes. Slow-Synchronisation is also possible, solely or in combination with the Red-Eye Reducing mode. The optional FL-40 External Flash can be connected as well\*.

\* Requires the FL-BK01 Flash Bracket and FL-CB01 Flash Cable for connection.

## Non-Parallax LCD Viewfinder & Monitor

Whatever you see through the viewfinder is captured almost identically. You can check the focus through the viewfinder. Also, images can be viewed on the monitor immediately after they are shot.



70mm with 2.7X Digital Zoom (1026mm)



25mm (135mm)



37mm (200mm)



70mm (380mm)



## CAMERA C-2100 Ultra Zoom Digital Camera Specifications

Recording system	Still image : TIFF/JPEG with DCF (Design rule for Camera File system) and DPOF (Digital Print Order Format) support Motion JPEG image : QuickTime Motion JPEG support Audio : Wave format support
Memory	3V (3.3V) SmartMedia 2MB, 4MB, 8MB, 16MB, 32MB, 64MB
Approx. no. of storable still pictures without sound (When using an 8MB SmartMedia)	1 ~ 8 shots (TIFF mode) 5 shots (Super High Quality mode) 16 shots (High Quality mode) 8 ~ 32 shots (Standard Quality mode-High) 24 ~ 82 shots (Standard Quality mode-NORMAL)
Image pickup element	1/2 inch CCD, 2,110,000 pixels (total), 2,020,000 pixels (effective)
Recording image	1600 x 1200 pixels (TIFF/S HQ/HQ), 1280 x 960 pixels (TIFF/SQ), 1024 x 768 pixels (TIFF/SQ), 640 x 480 pixels (TIFF/SQ)
Lens	Olympus lens 7.0 ~ 70.0mm, F2.8 ~ F3.5, 13 elements in 10 groups (equivalent to 38 ~ 380mm lens on 35mm camera)
Digital Zoom mode	2.7X (Up to 27X with 10X optical zoom)
Photometric system	Digital ESP light metering, Center-weighted average light metering, Spot light metering
Sensitivity	Auto, and settings equivalent to approx. ISO100, 200, 400
Exposure control	Programmed auto, Scene-Program auto, Aperture-priority auto, and Shutter-priority auto exposure modes Aperture-priority : Wide ; F2.8 ~ 8.0, Tele ; F3.5 ~ 8.0 Shutter-priority : 1/2 ~ 1/800 sec. (used with mechanical shutter) Manual exposure mode : 1/6 ~ 1/800 sec. Motion JPEG Image mode : 1/30 ~ 1/10,000 sec.
Focusing	TTL iESP autofocus, Spot autofocus, Manual focus Contrast detection system Working range: Wide: 0.6m ~ ∞, Tele: 2.0m ~ ∞(Standard mode) Wide: 0.1m ~ 0.6m, Tele: 1.0m ~ 2.0m (Macro mode) AF illuminator effective distance : approx. 0.3m ~ 3.0m
White balance	iESP full auto TTL, Preset (daylight, overcast, tungsten, fluorescent light)
Picture effects	Black & White, Sepia, White Board, Black Board
Sequence mode	Up to 5 shots at 1.5 shots per sec. (SHQ) Up to 16 shots at 1.8 shots per sec. (HQ) Up to 86 shots at 2 shots per sec. (SQ) (excluding TIFF modes).
Viewfinder	0.55 inch colour TFT LCD, approx. 114,000 pixels
LCD monitor	4.5cm wide-angle colour TFT LCD display, approx. 114,000 pixels
Charging time for flash	Approx. 6 sec. (at normal temperature with new batteries)
Flash working range	Wide : Approx. 0.3 ~ 4m / Tele : Approx. 1.0 ~ 3.2m (ISO100)
Flash modes	Auto (automatic flash activation in low light and backlight), Red-Eye Reducing, Off (no flash), Fill-In (forced activation), Slow Synchronisation, Extension Flash
Selftimer	Electronic Selftimer with 12-sec. delay
Outer connectors	DC-IN jack, Exclusive USB connector, Serial connector, A/V out jack, External microphone jack, 5-pin external flash socket, Tripod socket
Calendar system	Up to 2030, recorded with picture data simultaneously
Operating environment	Temperature : 0 ~ 40°C (operation), -20 ~ 60°C (storage) Humidity : 30 ~ 90% (operation), 10 ~ 90% (storage)
Power supply	Two 3V lithium battery packs / LB-01E (CR-V3) or four AA nickel metal-hydrate batteries, AA lithium batteries, AA alkaline-manganese batteries* or AA NiCd batteries (Do not use Zinc-Carbon batteries.) Exclusive AC adaptor (optional)
Dimensions	112.5 (W) x 77.5 (H) x 141 (D) mm (excluding protruding parts.)
Weight (without batteries/card)	540g

\* The lifetime of AA alkaline-manganese batteries may vary, depending on conditions. It is recommended that you use optional rechargeable B-01 4PE NiMH Batteries or LB-01E 3V Lithium Battery Packs.

Personal computers used with the C-2100 Ultra Zoom must conform to the following minimum standards.

### IBM PC/AT compatible

CPU/Drive	Pentium or later/CD-ROM drive
Operating system	Windows 98/98 Second Edition/2000 Professional (USB connection) Windows 95/98/98 Second Edition/2000 Professional/ NT 4.0 SP3 or later (Serial connection)
Minimum hard disk free space	100MB
Minimum RAM	32MB
Connectors	USB port or standard RS-232C interface (D-SUB 9-pin)
Monitor	Minimum 32,000 colours, minimum 800 x 600 pixels

### Apple Macintosh

CPU/Drive	PowerPC/CD-ROM drive
Operating system	Mac OS 8.6 ~ 9 (USB connection), Mac OS 7.6.1 ~ 9 (Serial connection)
Minimum hard disk free space	100MB
Minimum RAM	32MB
Connectors	USB port or serial port (Mini DIN 8-pin)
Monitor	Minimum 32,000 colours, minimum 800 x 600 pixels

When used with a Macintosh with a serial port, the optional transfer connector for Macintosh is required.

## CAMERA P-330NE Digital Colour Printer Specifications

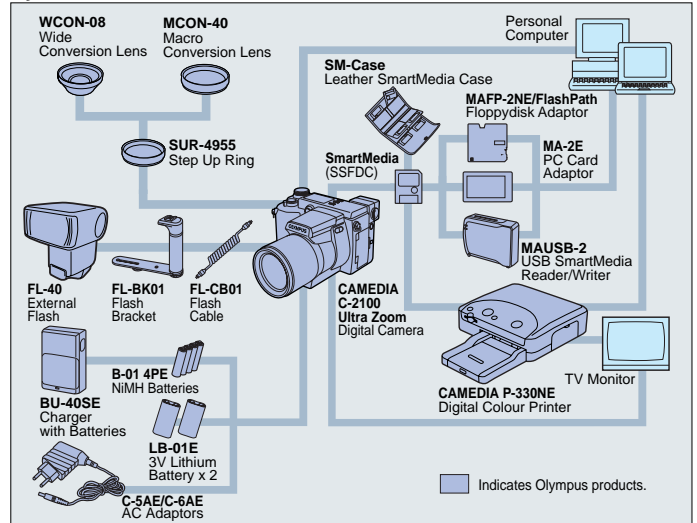
Printing system	Sublimation dye transfer printing (Yellow/Magenta/Cyan 3-pass)
Effective pixels	1024 (V) x 1376 (H) dots
Printing size	85 (V) x 114 (H) mm (maximum)
Gradations	256 levels (8 bits), approx. 16,770,000 colours
Printing time	Approx. 100 seconds per sheet (excluding data transmission time)
Input/output connectors	VIDEO IN, S-VIDEO IN, VIDEO OUT, Centronics Parallel Interface, Mini DIN 8-pin Serial Interface port
Power requirements	220 ~ 240V AC, 50/60Hz, 0.6A
Dimensions	Approx. 274 (W) x 83 (H) x 362 (D) mm (excluding protruding parts)
Weight	Approx. 2.7kg

www.olympus-europa.com

Windows® is a registered trademark of Microsoft Corporation. Macintosh™ is a trademark of Apple Computer Inc. QuickTime is a registered trademark of Apple Computer Inc. All other company and product names are registered trademarks and/or trademarks of their respective owners. The pictures of the LCD monitors (shown in this catalogue) are simulated photographs. Specifications and appearances are subject to change without any notice or obligation on the part of the manufacturer.

Photo locations courtesy of TOPPAN HALL

## System Chart



## Optional Accessories

**3V (3.3V) SmartMedia/Standard Card**  
Compact and removable memory card for storage convenience that also lets you make panorama pictures with the provided utility software. 8MB (M-8PE), 16MB (M-16PIE), 32MB (M-32PIE), 64MB (M-64PIE)



Panorama Function



**MAFP-2NE/FlashPath Floppydisk Adaptor**  
For easy reading of data in a SmartMedia on a computer with a 3.5" FDD.



**FL-40 External Flash**  
High-power flash with GN 40 for TELE, 26 for WIDE. Requires FL-CB01 and FL-BK01 for connection.



**MA-2E PC Card Adaptor**  
For quick reading of data in a SmartMedia on a computer with a PC card slot.



**FL-CB01 Flash Cable**  
For connecting the FL-BK01 Flash Bracket to the camera.



**MAUSB-2 USB SmartMedia Reader/Writer**  
For quick reading of data in a SmartMedia on a computer with a USB port.



**FL-BK01 Flash Bracket**  
For connecting the FL-40 External Flash to the camera.



**C-5AE/C-6AE AC Adaptors**  
For extended use of the camera.



**WCON-08\* Wide Conversion Lens**  
Shortens the focal length by 0.8 times. Requires SUR-4955 for attachment.



**B-01 4PE NiMH Batteries**  
4 rechargeable nickel metal-hydrate batteries.



**MCON-40\* Macro Conversion Lens**  
Enables close-ups of an area as small as approx. 30x23mm. Requires SUR-4955 for attachment.



**BU-40SE Charger with Batteries**  
Battery charger with 4 rechargeable nickel metal-hydrate batteries.



**SM-Case Leather Case**  
Holds 8 SmartMedia cards.



**LB-01E 3V Lithium Battery**  
Powerful, long-life battery for taking an extended number of shots.



**P-330NE Digital Colour Printer**  
Sublimation dye transfer printer with a SmartMedia Slot.



**Premium Glossy Inkjet Photo Media**  
Printing paper for inkjet printers that features minimum colour bleeding and is quick-drying. A4/10 sheets (MP-10U4E) A3/10 sheets (MP-10U3E)



**Paper Sets for P-330NE (60 sheets, 100x140mm)**  
Standard Paper (P-60NE) Laminated Paper (P-60NOCE) Label Set (P-60NS1E) Label Set (16 labels per sheet) (P-60NS16E)



\* With a conversion lens attached, the image stabiliser, built-in flash, and AF illuminator cannot be used.

**OLYMPUS**  
OLYMPUS OPTICAL CO., LTD. Tokyo, New York, Hamburg, London, Paris