

ENCLOSURE FOR 4-POSITION SELECTOR SWITCH, ID KEY SWITCH AND COORDINATE SWITCH 22MM, ROUND, ENCLOSURE MATERIAL PLASTIC, ENCLOSURE TOP PART GRAY, 1 COMMAND POINT PLASTIC, UNEQUIPPED



Figure similar

product brand name	SIRIUS ACT
Product designation	Commanding and signaling devices

Enclosure:

Design of the housing	Command point in center
Shape of the enclosure front	Square
Material of the enclosure	plastic
Number of command points	1
Product component	
• protective collar	No
Color	
• of top part of the enclosure	grey
Mounting type of the enclosure	Vertical / horizontal

General technical data:

Protection class IP	IP66, IP67, IP69(IP69K)
Degree of protection NEMA rating	NEMA 1, 2, 3, 3R, 4, 4X, 12
Shock resistance	
• for railway applications acc. to DIN EN 61373	Category 1, Class B
Vibration resistance	

• for railway applications acc. to DIN EN 61373

Category 1, Class B

Installation/ mounting/ dimensions:

Height	85 mm
Width	85 mm
Depth	64 mm
Mounting diameter	22.3 mm

Certificates/approvals

General Product Approval	For use in hazardous locations	Declaration of Conformity
--------------------------	--------------------------------	---------------------------



[Herstellereklärung](#)



other

[Bestätigungen](#)

Further information

Information- and Downloadcenter (Catalogs, Brochures,...)

<http://www.siemens.com/industrial-controls/catalogs>

Industry Mall (Online ordering system)

<https://mall.industry.siemens.com/mall/en/en/Catalog/product?mlfb=3SU18011AA001AA1>

Cax online generator

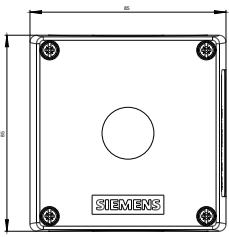
<http://support.automation.siemens.com/WW/CAXorder/default.aspx?lang=en&mlfb=3SU18011AA001AA1>

Service&Support (Manuals, Certificates, Characteristics, FAQs,...)

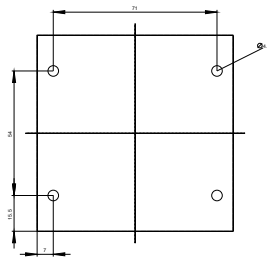
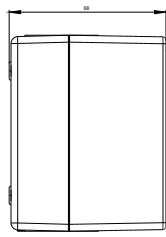
<https://support.industry.siemens.com/cs/ww/en/ps/3SU18011AA001AA1>

Image database (product images, 2D dimension drawings, 3D models, device circuit diagrams, EPLAN macros, ...)

http://www.automation.siemens.com/bilddb/cax_de.aspx?mlfb=3SU18011AA001AA1&lang=en



last modified:



29.02.2016