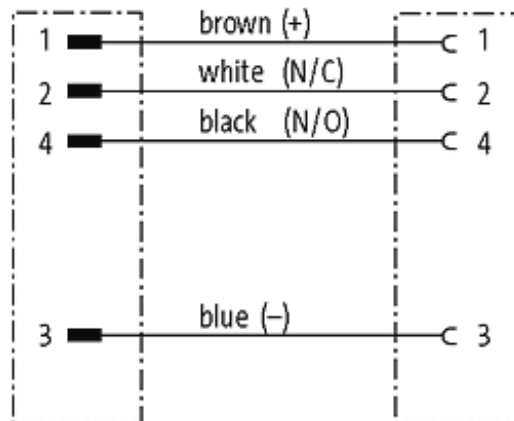


**M12 STEEL MALE 0° /M12 STEEL FEMALE 0°**

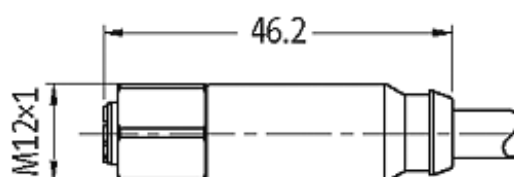
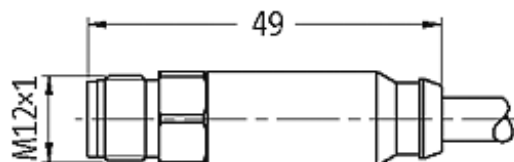
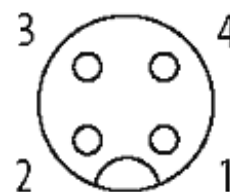
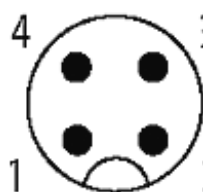
PVC 4X0.34 GRAY, 2m

Male straight to female straight  
M12 - M12, 4-pole

**Link to Product****Illustration**

Male

Female



Product may differ from Image

### Approvals



### Form

Form 40021

### Technical Data

Operating voltage	max. 32 V AC/DC
Operating current per contact	max. 4 A
Locking of ports	Screw thread M12 × 1 mm (recommended torque 0.6 Nm) self-securing
Protection	IP65, IP66K, IP67, IP68, IP69K inserted and tightened (EN 60529)
Locking material	Stainless Steel 1.4404 (V4A)

### Cables

Cable number	214
No./diameter of wires	4 × 0.34 mm <sup>2</sup>
Wire isolation	PVC (br, wh, bl, bk)
Jacket Color	gray
Shore hardness outer jacket	85 ± 5A
Material (jacket)	PVC (UL/CSA)
Outer Ø	approx. 5.0 mm
Bend radius (fixed)	5 × outer Ø
Bend radius (moving)	10 × outer Ø
Temperature range (fixed)	-30...+80 °C
Temperature range (mobile)	-5...+80 °C

### General data

Temperature range -40...+85 °C

### Commercial data

country of origin	CZ
customs tariff number	85444290
minimum order quantity	1