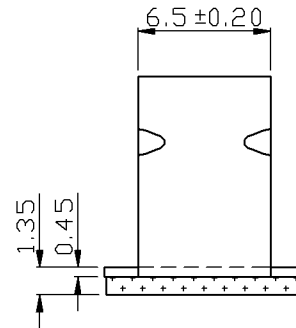
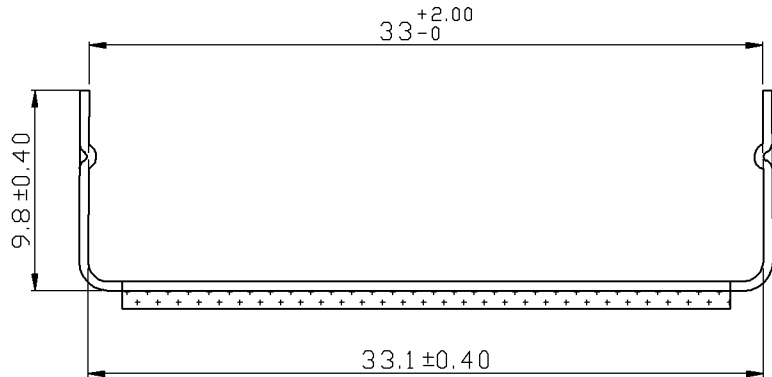
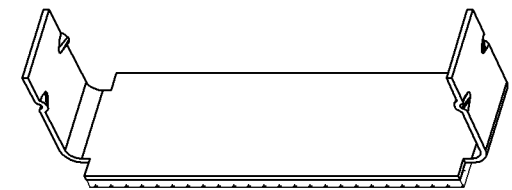
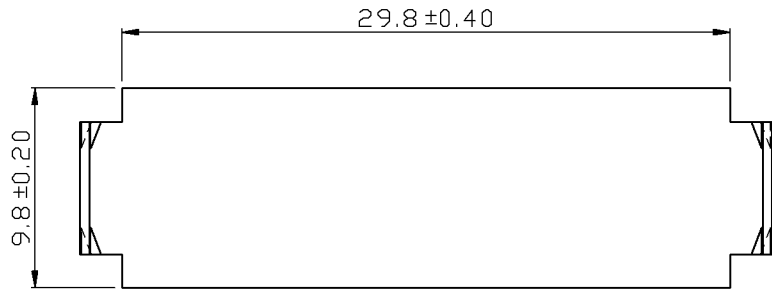
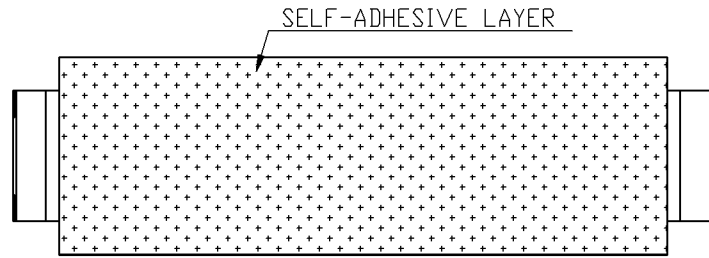


REV	DESCRIPTION	DATE
△ A	RDK-97186	張馨尹 2008/11/10
△ B	RDE-99018	陳文祥 2010/01/29
△ C	RDC-100002	張馨尹 2011/01/07



- NOTE :
1. CLIP MATL: ALUMINUM
 2. BASE MATL : POLYETHYLENE PAD-SELF ADHESIVE.
 - △3. ADHESIVE BASE : ACRYLIC
 - △4. HOLDING POWER (hr/kg*25mm²) : 80°/0.5kg/24h ↑; 25°/1kg*24h ↑
 - △5. TEMPERATURE RANGE : -10°C~90°C
 - △6. 180° PEEL ADHESION (kg/25mm) : 25kg ↑



Tolerance Unless Otherwise Specified	
0 > 6 mm ± 0.20	ANGLE
6 > 18 mm ± 0.30	0° ° REF ±
18 > 30 mm ± 0.40	° ° ±
30 > 75 mm ± 0.50	° ° ±

NAME	OPEN ARM CLIPS				UNIT	mm	
PART NO.	ALACA-04	MATERIAL	AL	APPROVE			
NUMBER	KA-961301-C	SCALE	SHEET	PAGE	CHECKED		
DATE	2007/11/27	3/1	1-3	10F1	DRAWN	曹 苒 賢	

