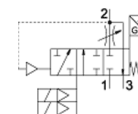
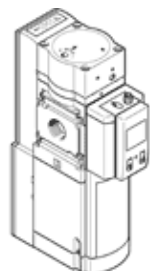


# soft-start/quick exhaust valve MS6-SV-1/2-E-10V24-AD1

Part number: 562580

FESTO

Pressure sensor with indicator, PNP, M8, 3-pin



## Data sheet

Feature	Value
Series	MS
Size	6
Grid dimension	62 mm
Safety function	Exhausting Prevention of unexpected start-up (pressurisation)
Safety Integrity Level (SIL)	Exhausting / SIL 3 Prevention of unexpected start-up (pressurisation)/SIL 3
Performance level (PL)	Vent/up to Category 4, PL e Prevention of unexpected start-up (pressurisation)/up to category 4, Performance Level e
Note on forced dynamisation	Switching frequency min. 1/month
Design structure	Piston seat
Freedom from overlap	No
Type of actuation	electrical
Pilot air supply	Internal
Sealing principle	soft
Exhaust-air function	not throttleable
Position sensing principle	Solenoid actuator principle
Conforms to standard	DIN EN ISO 13849-1
Manual override	None
Type of reset	mechanical spring
Type of piloting	Piloted
Valve function	3/2 closed, monostable Pressure build-up function
Operating pressure	3.5 ... 10 bar
Pressure gauge	with pressure sensor
C value	19.3 l/sbar
b value	0.21
Standard nominal flow rate	4,300 l/min
Standard flow rate for exhaust 6->0 bar	9,000 l/min
Max. switching frequency	1 Hz
Switching time off	40 ms
Switching time on	130 ms
Duty cycle	100 %
Signal status display	LED Floating contact
Nominal operating voltage DC	24 V
Permissible voltage fluctuation	+/- 10 %
Operating medium	Compressed air in accordance with ISO8573-1:2010 [7:4:4]
Note on operating and pilot medium	Lubricated operation possible (subsequently required for further operation)
Corrosion resistance classification CRC	2 - Moderate corrosion stress
Materials note	Conforms to RoHS
Protection class	IP65

<b>Feature</b>	<b>Value</b>
	with plug socket
Medium temperature	0 ... 50 °C
Ambient temperature	0 ... 50 °C
Storage temperature	0 ... 50 °C
Shock resistance	Shock test with severity level 2 in accordance with FN 942017-5 and EN 60068-2-27
Vibration resistance	Transport application test at severity level 2 in accordance with FN 942017-4 and EN 60068-2-6
Authorisation	RCM Mark
KC mark	KC-EMV
CE mark (see declaration of conformity)	to EU directive for EMC to EU directive for machinery
Certificate issuing department	IFA 1001180
Food-safe	See Supplementary material information
Mounting type	Optional Line installation with accessories
Assembly position	Any
Product weight	2,200 g
Pneumatic connection, port 1	G1/2
Pneumatic connection, port 2	G1/2
Pneumatic connection, port 3	G1
Electrical connection	Sub-D 9-pin
Material housing	Aluminium die cast
Material seals	NBR
Material piston rod	High alloy steel, non-corrosive