



Connectors > Automotive Connectors > Automotive Housings > 48V ready 1.2mm Connectors



Number of Positions: 3

Connector & Housing Type: **Housing for Male Terminals**

Mating Tab Width: 1.2 mm [.04 in]

Connector System: **Wire-to-Wire**

Centerline (Pitch): 4 mm [.15 in]

[All 48V ready 1.2mm Connectors \(62\)](#)

Features

Product Type Features

Mixed & Hybrid Connector	No
Connector Shape	Rectangular
Connector & Housing Type	Housing for Male Terminals
Connector System	Wire-to-Wire
Sealable	Yes
Primary Locking Feature	Integrated in Housing
Connector & Contact Terminates To	Wire & Cable

Configuration Features

Number of Positions	3
Number of Rows	1

Electrical Characteristics

Operating Voltage	14 VDC
-------------------	--------

Body Features

Cable Exit Angle	180°
Primary Product Color	Gray
Connector & Keying Code	B

Contact Features

--	--



Contact Size	1.2mm
Contact Type	Tab
Mating Tab Width	1.2 mm[.04 in]

Mechanical Attachment

Strain Relief	Without
Terminal Position Assurance	Yes
Mating Alignment Type	Keyed
Mating Alignment	With
Connector Mounting Type	Cable Mount (Free-Hanging)

Housing Features

Housing Material	PBT GF
Centerline (Pitch)	4 mm[.15 in]

Dimensions

Product Width	44 mm[1.732 in]
Product Length	18.8 mm[.74 in]
Connector Height	14.95 mm[.589 in]

Usage Conditions

Operating Temperature (Max)	125 °C[257 °F]
Operating Temperature Range	-40 – 125 °C[-40 – 257 °F]

Packaging Features

Packaging Quantity	1400
Packaging Method	Box

Other

Serviceable	Yes
Connector Position Assurance Capable	No

Product Compliance

For compliance documentation, visit the product page on TE.com>

EU RoHS Directive 2011/65/EU	Compliant
EU ELV Directive 2000/53/EC	Compliant
China RoHS 2 Directive MIIT Order No 32, 2016	No Restricted Materials Above Threshold
EU REACH Regulation (EC) No. 1907/2006	




Current ECHA Candidate List: JAN 2025  
(247)  
Candidate List Declared Against: JAN 2025  
(247)  
Does not contain REACH SVHC

Halogen Content	BFR/CFR/PVC Free, but Br/Cl >900 ppm in other sources.
Solder Process Capability	Not reviewed for solder process capability

Product Compliance Disclaimer

This information is provided based on reasonable inquiry of our suppliers and represents our current actual knowledge based on the information they provided. This information is subject to change. The part numbers that TE has identified as EU RoHS compliant have a maximum concentration of 0.1% by weight in homogenous materials for lead, hexavalent chromium, mercury, PBB, PBDE, DBP, BBP, DEHP, DIBP, and 0.01% for cadmium, or qualify for an exemption to these limits as defined in the Annexes of Directive 2011/65/EU (RoHS2). Finished electrical and electronic equipment products will be CE marked as required by Directive 2011/65/EU. Components may not be CE marked. Additionally, the part numbers that TE has identified as EU ELV compliant have a maximum concentration of 0.1% by weight in homogenous materials for lead, hexavalent chromium, and mercury, and 0.01% for cadmium, or qualify for an exemption to these limits as defined in the Annexes of Directive 2000/53/EC (ELV). Regarding the REACH Regulation, the information TE provides on SVHC in articles for this part number is based on the latest European Chemicals Agency (ECHA) 'Guidance on requirements for substances in articles' posted at this URL: <https://echa.europa.eu/guidance-documents/guidance-on-reach>

Compatible Parts




TE Part # 2-2378603-1  
3POS,NEXTGEN, MCON 1.2 LL REC, SLD,COD B



TE Part # 2-1718644-1  
3POS, MCON 1.2 LL REC SEALED



TE Part # CAT-N13-MSLRTT12  
MCON 1.2 Locking Lance Receptacle and Tab Terminals




TE Part # 2-1703496-1  
3POS,TAB 1.2X0.6,TAB HSG,CODE B



TE Part # CAT-NC1-MVA1248  
MCON 1.2 48 Volt Accessories



TE Part # 2-1670917-1  
3POS, MCON 1.2 LL REC SEALED



TE Part # 3-1579028-8  
EXTRACTION TOOL

Also in the Series | MCON 1.2mm



Automotive Connector Caps & Covers  
(15)



Automotive Connector Locks &  
Position Assurance(10)



Automotive Housings(335)



Automotive Terminals(93)



Connector Seals & Cavity Plugs(10)

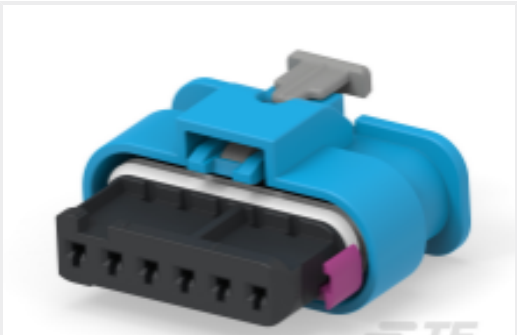


Insertion & Extraction Tools(5)



Other Automotive Connector  
Accessories(10)

Customers Also Bought



TE Part #CAT-N14-RC4812  
48V ready 1.2mm Connectors



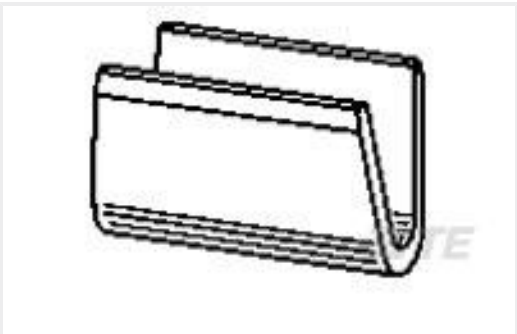
TE Part #3-1447221-5  
S/S REC CONTACT ASSY, AU, 0.3



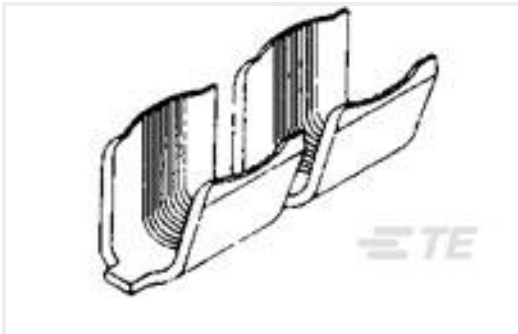
TE Part #1718760-1  
MCON 1.2 LL TAB SWS SN



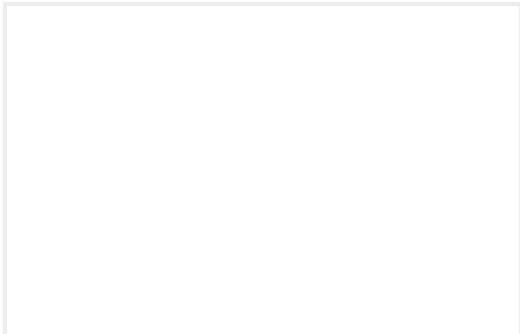
TE Part #5-534998-3  
06 MODIV VRT DR CE 100/125



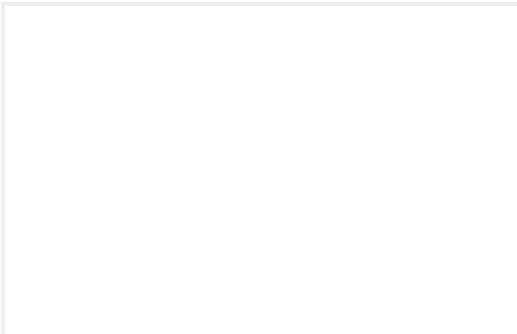
TE Part #160660-2  
SPLICE 22-18 AWG .013 TPBR



TE Part #42779-2  
SPLICE AMPLIVAR 3000-7000



TE Part #1-2434392-2  
3POS,MCON 1.2,TAB HSG ASSY,SLD,  
COD A



TE Part #2-2434392-2  
3POS,1.2X0.6,TAB HSG ASSY,SLD,  
COD B



TE Part #936613-1  
2.8MM MCP-E TAB CONT

Documents



Product Drawings

3POS, MCON 1.2 LL TAB SEALED COD B

English

CAD Files

3D PDF

3D

Customer View Model

ENG\_CVM\_CVM\_2-1703494-1\_B.2d\_dxf.zip

English

Customer View Model

ENG\_CVM\_CVM\_2-1703494-1\_B.3d\_igs.zip

English

Customer View Model

ENG\_CVM\_CVM\_2-1703494-1\_B.3d\_stp.zip

English

By downloading the CAD file I accept and agree to the [Terms and Conditions](#) of use.

Product Specifications

Application Specification

English