

# LET-303-24V 240V DC

## Standards/Approvals

VDE and VDE-EMV pending  
Transformer meets all CE standards  
RoHS compliant

## Available Version

901303240-24 – Standard version

## Mechanical and Thermal

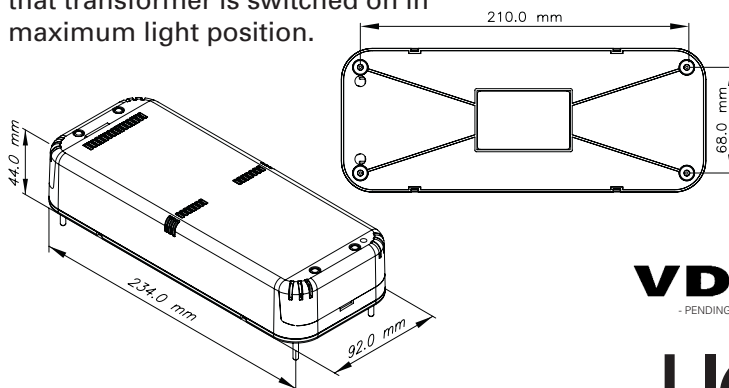
Dimensions (mm) 234 x 92 x 44  
Weight 750 grams  
Tc 80°C  
Ta 45°C

## Electrical

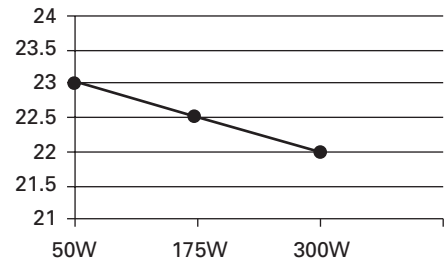
Maximum load 300w  
Minimum load without dimmer 50w  
Minimum load with dimmer 75w  
Input 230-240V 50/60Hz  
Output at max load 22V DC  
Input current at max. load 1.25-1.3A  
Output current at max. load 12.5A  
Power factor 0.999  
Max. harmonic distortion at full load 4%  
Dimmable with leading and trailing edge dimmers  
EMC up to 12m as per EN55015  
Safety as per EN 61046

## Dimming

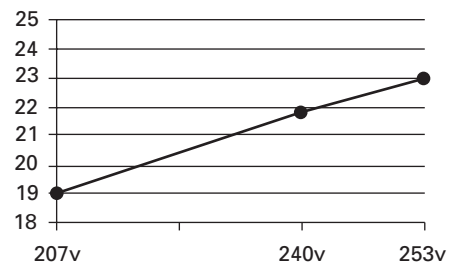
Transformer is virtually noiseless when operating with most types of dimmers. Transformer furthermore does not create any noise in filaments during dimming when operating with most types of dimmers down to 20% of maximum light output. We recommend that transformer is switched on in maximum light position.



## Output Voltage vs. Load at 240V



## Output vs. Input at Max. Load



## Protection

### Short Circuit Protection:

Highly sensitive manually resettable electronic short circuit protection to meet standards for open conducted systems. Detection time below 1 msec. Will shut off short circuit caused by 34AWG wire @ min load @ 12m.

### Overload Protection:

The overload starts at 12.5A and regulates output current to 12.5A for any overload condition above 300W.

### Thermal Protection:

Self dimming if ambient temperature next to transistors moves above 85°C.

See reverse side for more information →



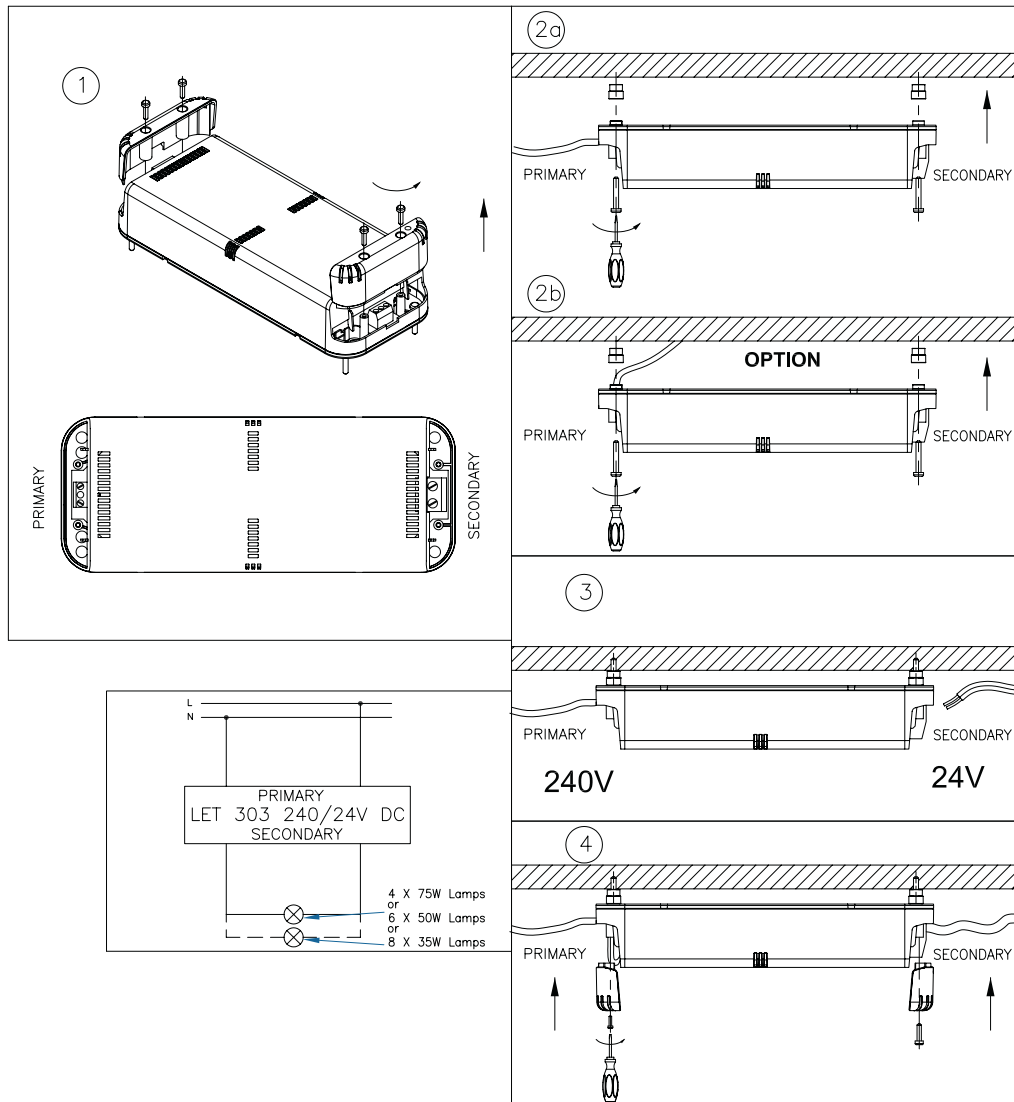
**LIGHTTECH**™

WWW.LIGHTTECHINC.COM

www.lighttechinc.com

# LET-303-24V 240V DC

## Mounting Instructions



## Safety Instructions:

1. Please note national installation regulations.
2. The measurement of secondary voltage can only be done with suitable measuring instruments.
3. Wires diameter:  
Primary – 0.75mm<sup>2</sup>  
Secondary – 3.3mm<sup>2</sup>.