

Data sheet

Commercial Art.No.: 46.032.5055.7

device connector RST16I3 S S1 M02 GN

RST® MINI device connector, standard, straight, M16, number of poles 3, model male, connection type screw connection, rated voltage 250 V / 400 V, rated current 16 A, color of coding/ contact carrier leaves green



Commercial Art.No.	46.032.5055.7
EAN	4049088279874
Order Unit	1

certificates / approvals



Technical data

general

rated current	16 A
rated voltage	250 V / 400 V
pollution degree	3
rated impulse voltage	4 kV
continuity resistor	0.75 mOhm
lockable	self-locking (unlocking by hand)
color of coding/ contact carrier	leaves green
marking of poles	1, 2, PE

connection data

connection cross section solid mm² max.	2.5 mm²
connection cross section solid mm² min.	0.25 mm²
connection cross section fine stranded mm² max.	2.5 mm²
connection cross section fine stranded mm² min.	0.25 mm²
terminations per pole	1
wire strip length	8 mm
connection cross section stranded mm² min.	0.25 mm²
connection cross section stranded mm² max.	1.5 mm²

technical data UL

rated voltage UL	600 V
rated current UL	16 A
connection cross section solid AWG min.	24 AWG

connection cross section solid AWG max.	14 AWG
connection cross section stranded AWG min.	24 AWG
connection cross section stranded AWG max.	14 AWG
degree of protection (NEMA)	4, 4x

model

model	male
connection type	screw connection
connecting thread metric	M16
angle of plug	straight
degree of protection (IP)	IP66/68 (3m;2h) /IP69
thickness of housings (electrical device)	0.5 mm
thickness of housings (electrical device)	5 mm

material

housing material	polyamide
halogen free	yes
contact material	CuZn
fire load	0.043 kWh/St
insulation components continuous temperature	100 °C
surface finish	silver-plated

dimensions

length	35.2 mm
width	19 mm
height	19 mm

note

note	RST® terminals with screw clamping allow the connection of conductors without special preparation (without ferrules) according to EN 60999-1.; positioning realised with flattened thread
------	---

classification

ECLASS 11	
ECLASS 8.1	27440602
ETIM 9.0	EC002566
ETIM 8.0	EC002566
ETIM 7.0	EC002566
ETIM 6.0	EC002566
ETIM 5.0	EC002566
ETIM 4.0	EC002566

product compliance

ROHS conformity status	compliant
REACH-SVHC conformity status	compliant

Accessories

Commercial Art.No.:	Article-type description:	Description:
------------------------	---------------------------	--------------

06.563.8853.1	cover for male connector SW	RST16i3/2 cover piece, for covering unused male connectors, color black
06.563.8953.1	cover for male connector SW	RST16i3/2 cover piece, for covering unused male connectors, with fastening belt, color black

Fits with

Commercial Art.No.:	Article-type description:	Description:
46.031.4555.7	connector RST16i3 S B1 ZT4S GN	RST® MINI connector, straight, number of poles 3, female, connection type screw connection, rated voltage 250 V / 400 V, rated current 16 A, cable diameter 5 - 10.6 mm, color of coding/ contact carrier leaves green
46.031.4455.7	connector RST16i3 S B1 ZT3S GN	RST® MINI connector, straight, number of poles 3, female, connection type screw connection, rated voltage 250 V / 400 V, rated current 16 A, cable diameter 7.1 - 13 mm, color of coding/ contact carrier leaves green

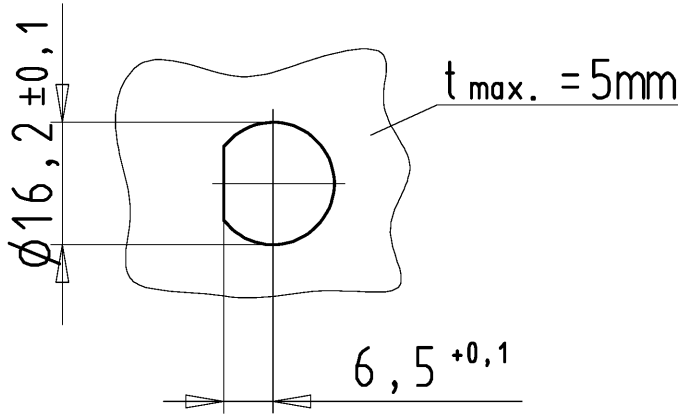
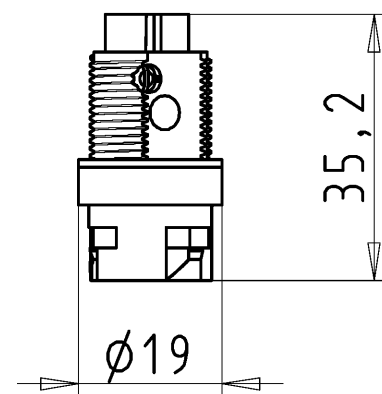
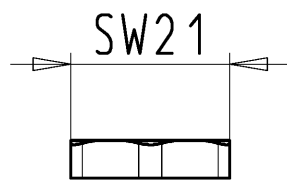
A
These dimensions will be especially checked at delivery
Only inspection dimensions
With /E marked dimensions are only valid for internal use

C
Diese Maße werden bei Abnahme besonders geprüft
Ausschließlich Prüfmaße
Mit /E gekennzeichnete Maße sind nur für interne Zwecke gültig

D

E

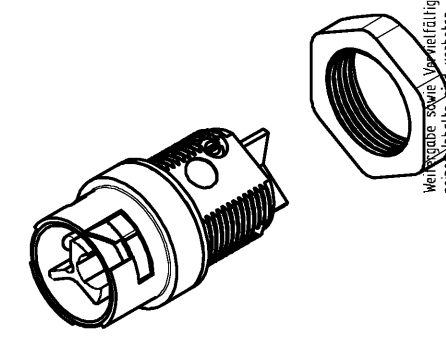
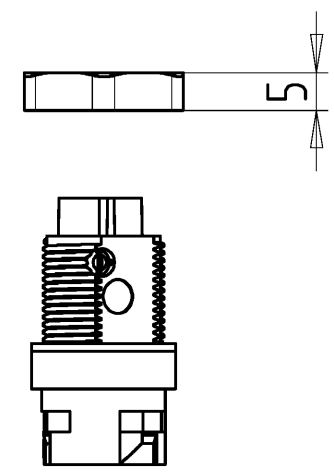
F



- Kodierung
/coding
- C1
 - C2
 - C3
 - C4
 - C5

Gehäuseausschnitt/
section of housing

Auslieferungszustand
delivery status



Wiedergabe sowie Vervielfältigung dieses Dokuments, Verwertung und Mitteilung seines Inhalts sind verboten, soweit nicht ausdrücklich gestattet. Die Reproduktion, Distribution und Nutzung dieses Dokuments sowie die Kommunikation der Inhalte ohne schriftliche Genehmigung ist untersagt.

46.032.5053.9	RST16i3 S S1 M02 H BL	C4	lichtblau /lightblue
46.032.5055.7	RST16i3 S S1 M02 GN	C2	laubgrün /leafgreen
46.032.5050.6	RST16i3 S S1 M02 TB	C5	türkisblau /turquoiseblue
46.032.5050.4	RST16i3 S S1 M02 L BR	C3	signalbraun /signalbrown
46.032.5053.1	RST16i3 S S1 M02 SW	C1	schwarz /black
46.032.5053.0	RST16i3 S S1 M02 GL	C1	lichtgrau /lightgrey
Bestellnummer /Order number	Typ /Type	Kodierung /coding	Farbe /colour
Weitere Daten siehe KATALOG oder eKatalog. Additional data see CATALOG or eCatalog.		www.wieland-electric.com eshop.wieland-electric.com	

Tolerierung Size ISO 14405(®)/Tolerance system Size ISO 14405(®). (This ISO-standard describes the envelope principle. According to the envelope principle the deviations of form and parallelism are limited by the size tolerances).				ja/yes <input checked="" type="checkbox"/> Stoffverbots- und Deklarationsliste nach UU-TQM-05/03 ist einzuhalten. Conformity with Wieland document UU-TQM-05/03 (list of prohibited / deklarable hazardous substances) to be declared!			
Freitoleranz nach General tolerance		CAD - Zeichnung, keine manuellen Änderungen CAD - drawing, no manual modifications allowed		1.Verwendung: - First Use:		Blatt: 1 von 1 Sheet: of 1	
		Werkstoff/Material		2014	Tag/Date	Name	
				gezeichnet drawn	07.07.	Dütsch T.	
				geprüft checked	-	-	
				Normgepr. Stand. check	-	-	
		Vol. mm³		Ofl./Surf. mm²		Ersatz für/Replacement for: -	
				Type		Benennung/Title	
a		06.10.2014/ Datum / Blatt Date / Sheet		www.wieland www.wieland-electric.com		RST16i3 ...	
Index						STECKERTEIL Geräteanschluss, 3 polig male connector, device connection, 3 polig	
Änderung/Revision							