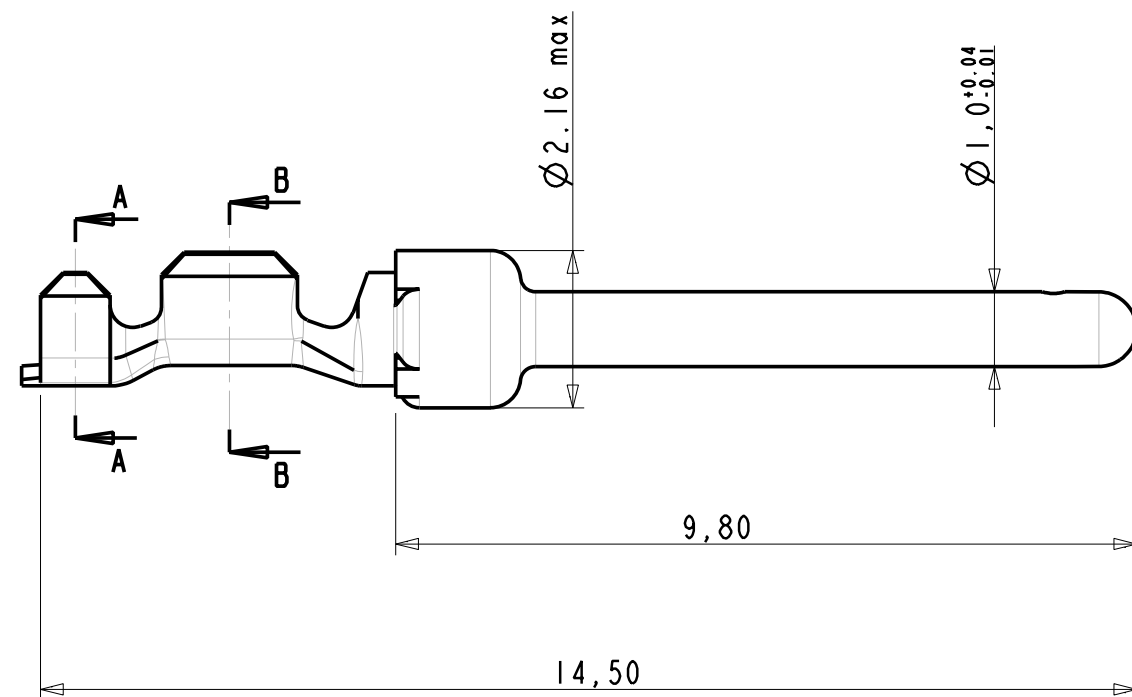
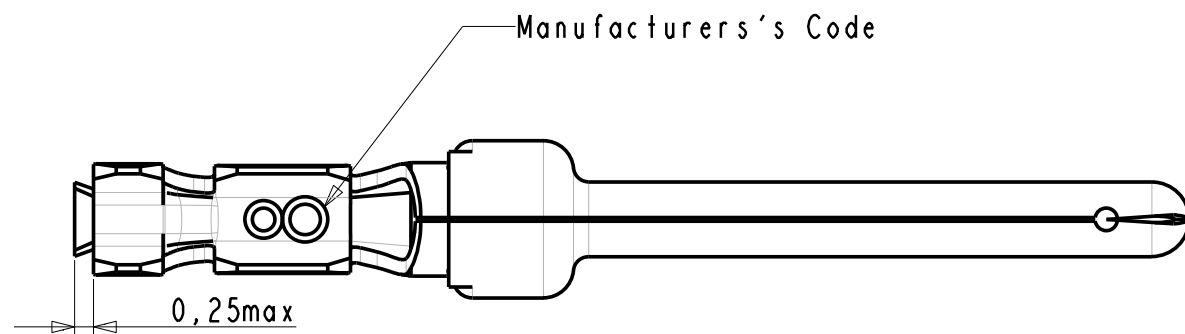


A

B

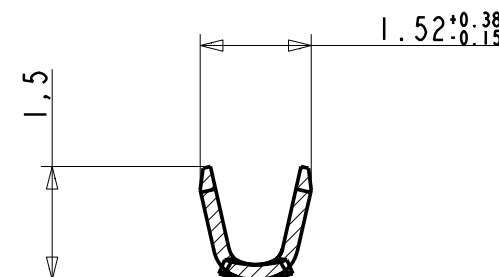
C

D

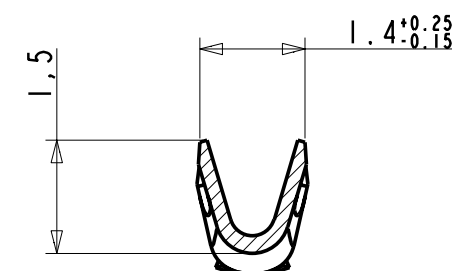


PART NUMBER	Plating
8656350067LF	0.4µ Au
8656350067	0.4µ Au
8656350065LF	0.76 µ Au
86563050065	0.76µ Au
8656350064LF	flash Au
8656350064	flash Au

NOTES:
1-Material: Phosphor bronze,thickness 0.20
socket :Phosphor bronze
2-Finish on contact area: see table
finish on termination:bright tin lead over nickel
3-Wire range:20 to 28 AW
4-Max outer dia of wire insulator:
-1.73 mm for contact #20-24
-1.02 mm for contact #24-28
5-Current carrying capacity per contact:
5.Amps max when crimped to #20 AWG
5 Amps max when crimped to #22 AWG
3 Amps max when crimped to #24 AWG
2 Amps max when crimped to #26 AWG
1 Amps max when crimped to #28 AWG
6-After 5 insertions into connector,
contact retention must be 5 pounds axial load min
7-When contact is crimped to 20 AWG,the insulation
support crimped height must be 1.78 mm max to ensure
a proper insertion into housing
6-Packaging:Reel



SECTION A-A



SECTION B-B

CROSS SECTIONS
FOR CT #24-28

NOTE : ROHS INFORMATION
The LF products meet European union directives and other
country regulations as described in GS-22-008
Terminations plating spec : 2um Nickel min + 2um Sn min
Packaging Spec : see GS-14-930

rev	ecn no	dr	date
C	LS06-196	MPE	27/11/2006
-	-	-	-
-	-	-	-
-	-	-	-
-	-	-	-
-	-	-	-
-	-	-	-

www.fciconnect.com		surface - <input checked="" type="checkbox"/> ISO 1302	tolerance std ISO 406 ISO 1101	projection	mm
		TOLERANCES UNLESS OTHERWISE SPECIFIED			
Dr	-	18/04/03	ANGULAR	0.X	±0.3
Eng	-	-	LINEAR	0.XX	±0.1
Chr	-	-	0° ±2°	0.XXX	±0.05
Appr	-	-	Product family	-	Spec ref
FCI		title CRIMP PIN			Rev.
		#Wire 24-28 Ø1.02			C
		catalog no	dwg no	C01-8656-1506	
		PDM-Rev:C			sheet 1 of 1
		STATUS-Released			Printed: Nov 29, 2006