



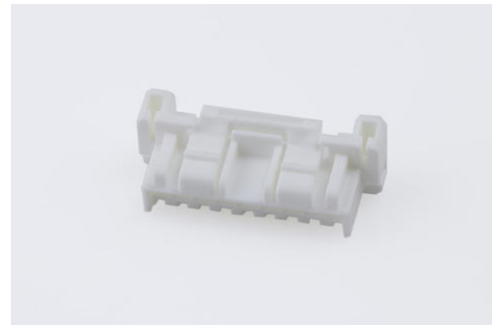
**Part Number :** [5024390900](#)

**Product Description :** CLIK-Mate Plug Housing, 2.00mm Pitch, Single Row, Positive Lock, 9 Circuits, White

**Series Number :** 502439

**Status :** Active

**Product Category :** Connector Housings



---

## Documents & Resources

### Drawings

[5024390900\\_sd.pdf](#)

### 3D Models and Design Files

[STEP AP242](#)

[SOLIDWORKS](#)

[Creo](#)

### Specifications

[AS-502439-001-001.pdf](#)

[AS-502439-002-001.pdf](#)

[5024399200-200.pdf](#)

[5024431570-000.pdf](#)

---

## Product Environment Compliance

### Compliance

GADSL/IMDS	Not Relevant
China RoHS	per SJ/T 11365-2006 
EU ELV	Not Relevant
Low-Halogen Status	Not Low-Halogen per IEC 61249-2-21
REACH SVHC	Not Contained per D(2025)4165-DC (25 June 2025)
EU RoHS	Compliant per EU 2015/863

## Compliance Statements

- EU RoHS
- REACH SVHC
- Low-Halogen

## Industry Documents

- IPC 1752A Class C
- IPC 1752A Class D
- Molex Product Compliance Declaration
- IEC-62474
- chemSHERPA (xml)

## Substances of Interest

- PFAS

## EU RoHS Certificate of Compliance

## Additional Product Compliance Information

---

## Part Details

### General

Status	Active
Category	Connector Housings
Series	502439
Description	CLIK-Mate Plug Housing, 2.00mm Pitch, Single Row, Positive Lock, 9 Circuits, White
Application	Signal, Wire-to-Board
Comments	See Product Specification for maximum current rating by circuit size and wire AWG
Product Name	CLIK-Mate
UPC	822350915878

### Agency

UL	E29179
----	--------

### Physical

Breakaway	No
Circuits (maximum)	9
Color - Resin	White
Gender	Plug

Glow-Wire Capable	No
Keying to Mating Part	Yes
Lock to Mating Part	Yes
Material - Resin	PBT
Number of Rows	1
Packaging Type	Bag
Panel Mount	No
Pitch - Mating Interface	2.00mm
Polarized to Mating Part	Yes
Stackable	No
Temperature Range - Operating	-40° to +105°C

---

## Mates With / Use With

### Mates with Part(s)

Description	Part Number
2.00mm Pitch CLIK-Mate Vertical Single Row PCB Receptacles	<a href="#"><u>502443</u></a>
2.00mm Pitch CLIK-Mate Right-Angle Single Row PCB Receptacles	<a href="#"><u>502494</u></a>

### Use with Part(s)

Description	Part Number
Pre-Crimped Lead CLIK-Mate 2.00mm Male-to-CLIK-Mate 2.00mm Male, Tin (Sn) Plating, 150.00mm Length, 24 AWG, Black	<a href="#"><u>797581014</u></a>
Pre-Crimped Lead CLIK-Mate 2.00mm Male-to-CLIK-Mate 2.00mm Male, Tin (Sn) Plating, 300.00mm Length, 24 AWG, Black	<a href="#"><u>797581015</u></a>
2.00mm Pitch CLIK-Mate Male Crimp Terminals	<a href="#"><u>502438</u></a>