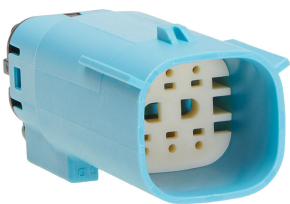




Part Number : [334823673](#)
Product Description : MX150 Mid-Voltage Mat-Sealed Male Connector Assembly, Dual Row, 6 Circuits, 48V, Keying Option A, without Connector Position Assurance, Light Blue
Series Number : 33482
Status : Active
Product Category : Connector Housings



Documents & Resources

Drawings
[334823673_sd.pdf](#)
[PK-31300-635-001.pdf](#)

Specifications
[AS-33472-100-001.pdf](#)
[AS-33472-100-FR-001.pdf](#)
[PS-33472-000-001.pdf](#)

Product Environment Compliance

Compliance

GADSL/IMDS	Compliant
China RoHS	Not Relevant
EU ELV	Compliant per 2000/53/EC
Low-Halogen Status	Not Relevant
REACH SVHC	Not Contained per D(2024)6225-DC (07 Nov 2024)
EU RoHS	Compliant per EU 2015/863

Multiple Part Product Compliance Statements

- Eu RoHS
- REACH SVHC
- Low-Halogen

Multiple Part Industry Compliance Documents

- IPC 1752A Class C
- IPC 1752A Class D

- Molex Product Compliance Declaration
- IEC-62474
- chemSHERPA (xml)

EU RoHS Certificate of Compliance

Part Details

General

Status	Active
Category	Connector Housings
Series	33482
Description	MX150 Mid-Voltage Mat-Sealed Male Connector Assembly, Dual Row, 6 Circuits, 48V, Keying Option A, without Connector Position Assurance, Light Blue
Application	Power, Wire-to-Wire, Automotive
Product Name	MX150
UPC	196823542596

Agency

UL	E29179
----	--------

Physical

Circuits (maximum)	6
Color - Resin	Blue (Light)
Gender	Plug
Glow-Wire Capable	No
Keying to Mating Part	Yes
Lock to Mating Part	Yes
Material - Resin	SPS/Nylon
Net Weight	9.703/g
Number of Rows	2
Packaging Type	Bag
Panel Mount	No
Pitch - Mating Interface	3.50mm
Polarized to Mating Part	Yes

Stackable	No
Temperature Range - Operating	-40° to +125°C

Mates With / Use With

Mates with Part(s)

Description	Part Number
MX150 Mid-Voltage Mat-Sealed Female Connector Assemblies	<u>300361</u>

Use with Part(s)

Description	Part Number
MX150 Backshell for Male Sealed Connector Assembly, 6 Circuit, with Rib	<u>349500610</u>
MX150 Backshell for Male Sealed Connector Assembly, 6 Circuit, without Rib	<u>349500620</u>
MX150 Male Terminals	<u>33000</u>
MX150 Male Terminals	<u>33011</u>