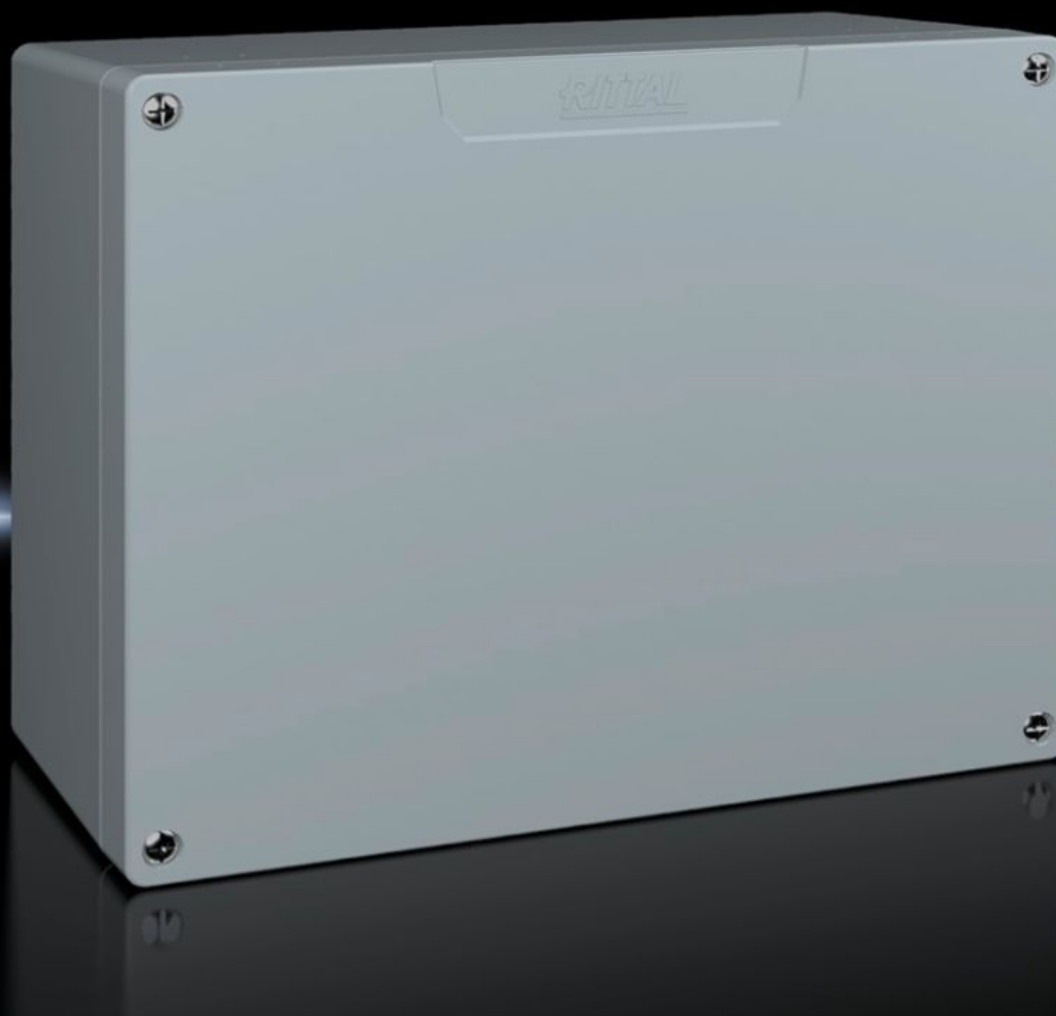
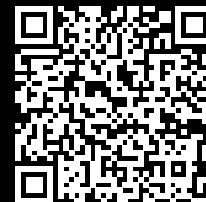


Rittal – The System.

Faster – better – everywhere.



GA 9117.210

Cast aluminium enclosures GA

State: 17/02/2022 (Source: rittal.com/com-en)

ENCLOSURES

POWER DISTRIBUTION

CLIMATE CONTROL

IT INFRASTRUCTURE

SOFTWARE & SERVICES

FRIEDHELM LOH GROUP



GA 9117.210 - Cast aluminium enclosures GA

Spray-finished cast aluminium enclosure. Protection category IP 66.



Features

Material	Enclosure: Cast aluminium Cover: Cast aluminium, all-round CR cellular rubber cord seal
Surface finish	Textured paint
Colour	RAL 7001
Supply includes	Enclosure with cover Cover screws, captive Screws for attaching support rails Screw for connection of the PE conductor
Protection category NEMA	NEMA 4
Protection category to IEC 60 529	IP 66
IK Code	IK08
Dimensions	Width: 280 mm Height: 232 mm Depth: 113 mm
Basic material	Cast aluminium
Weight/pack	3.22 kg
Packs of	1 Stück
ETIM 7.0	EC000261
ECLASS 8.0	27180101

Approvals

Certificates

IK-Code

Protection category

Explanations

Declaration of conformity