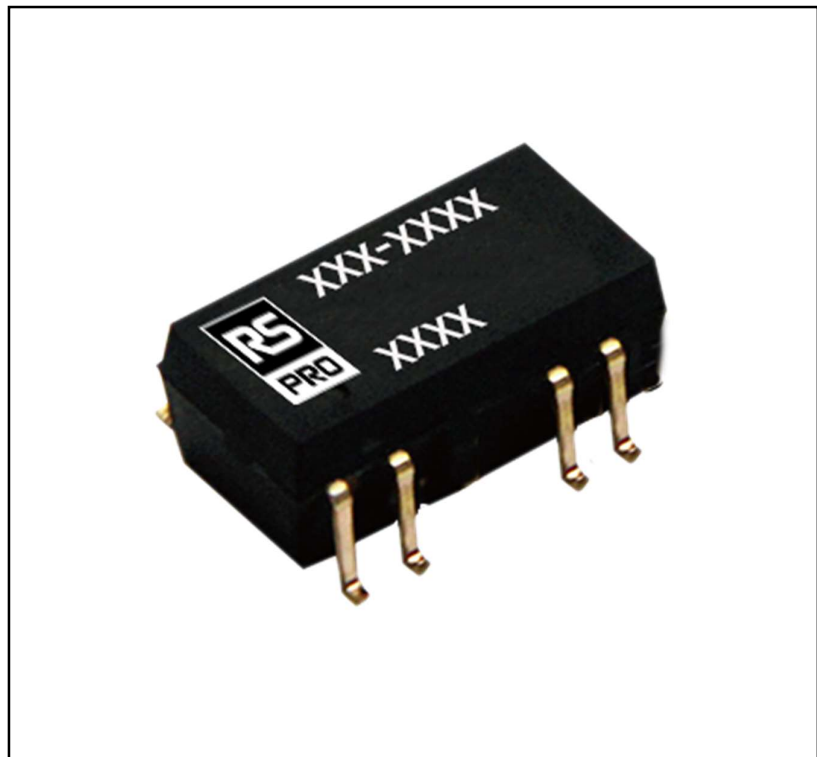


## Features

- Standard SMDpackage
- High power density
- Short-circuit protection
- High reliability
- Low ripple noise

## RS PRO DC - DC Converter

RS Stock No.: 0633258 0633259 0633260 0633261



RS PRO is the own brand of RS. The RS PRO Seal of Approval is your assurance of professional quality, a guarantee that every part is rigorously tested, inspected, and audited against demanding standards. Making RS PRO the Smart Choice for our customers.

## Product Description

- Fixed voltage input, isolated non regulated dual output
- Working temperature range -40 °C to +105 °C
- Small SMD package, international standard pin method
- Isolation voltage 1500Vdc
- Typical efficiency up to 86%

## Electrical Specifications

RS Stock#	Input Voltage (Vdc)	Output Voltage (Vdc)	Output Current (mA)	Efficiency (Typ)	Maximum capacity load
0633258	5(4.5~5.5)	±5	±100/±10	84%	1200uF
0633259	5(4.5~5.5)	±12	±42/±4	84%	470uF
0633260	12(10.8~13.2)	±5	±100/±10	84%	1200uF
0633261	12(10.8~13.2)	±12	±42/±4	85%	470uF

## General Specifications

Output Voltage	DC;5V;12V;24V
Input Voltage Range	DC 5(4.5-5.5); 12(10.8-13.2); 24(21.6-26.4)
Power Rating	1 W
Input Voltage Nominal	DC5V;12V;24V
Output Current	See Electrical Specifications
Mounting Type	SIP
Isolated	Yes
Number of Outputs	1
Output Voltage Adjustment Range	nonsupport
Package	Plastic pipe installation
Isolation Voltage	1500Vdc 1Min
Width	15.24mm
Depth	7mm
Length	11.4mm
Railway Approved	No
Load Regulation	15% Max
Medical Approved	No
Efficiency	81%-88%

---

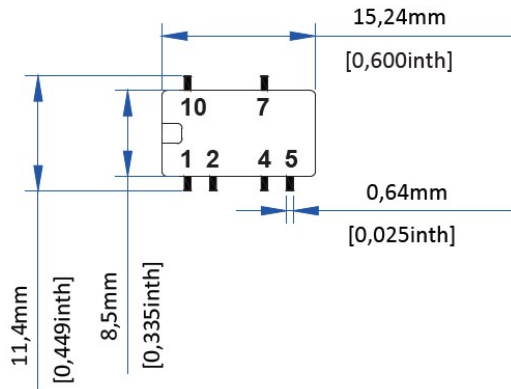
Maximum Operating Temperature	85°C
Minimum Operating Temperature	-40°C

## Approvals

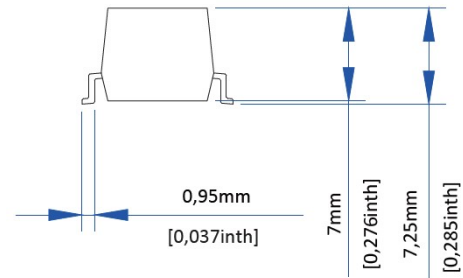
---

Compliance/Certifications	CE
---------------------------	----

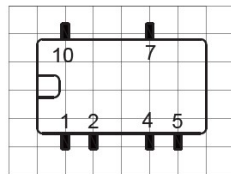
Top View



Side View



Recommended PCB size diagram

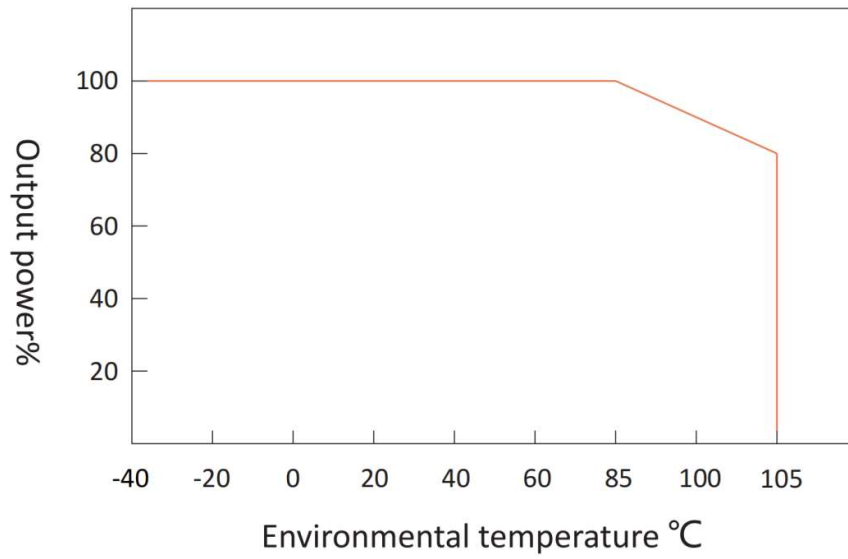


Grid distance 2.54 \* 2.54mm  
 Terminal section tolerance:  $\pm 0.10\text{mm}$  ( $\pm 0.004\text{inch}$ )  
 Unmarked tolerances:  $\pm 0.25\text{mm}$  ( $\pm 0.010\text{inch}$ )

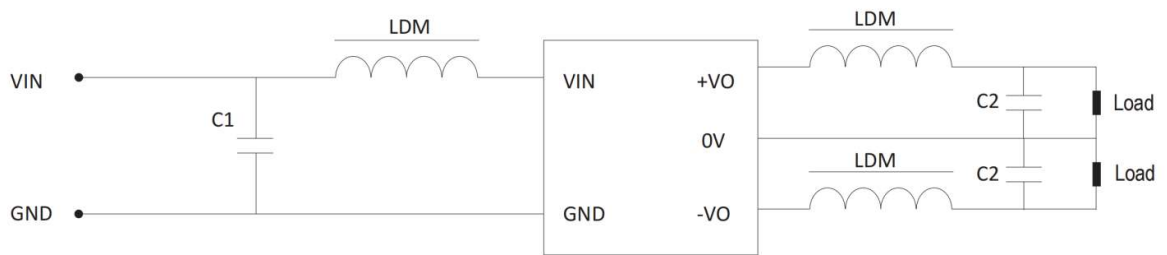
Pin definition

Pin	Definition
1	GND
2	VIN
4	0V
5	-Vo
7	+Vo
10	Nc

Temperature reduction curve

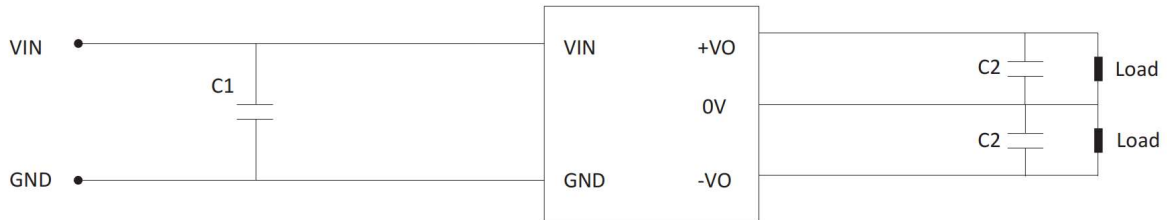


EMC Recommended Circuit



C1	4.7UF/50V
C2	10UF/50V
LDM	6.8uH

## Recommended basic application circuits



C1	4.7UF/50V
C2	10UF/50V

To ensure the efficient and reliable operation of the module, its minimum output load should not be less than 10% of the rated load during use.

If the power you require is indeed small, please parallel one at the output end A resistor (the sum of the power consumed by the resistor and the actual power used is greater than or equal to 10% of the rated power).

### Note:

1. The product should be used within the specification range, otherwise it may cause permanent damage to the product;
2. If the product operates below the minimum required load, it cannot be guaranteed that the product performance meets all performance indicators in this manual;
3. If the product operates beyond its load range, it cannot be guaranteed that its performance meets all performance indicators in this manual;
4. Unless otherwise specified, the above data were measured at  $T_a=25\text{ }^\circ\text{C}$ , humidity<75%, input nominal voltage, and output rated load (pure resistance load);
5. The above are the performance indicators of the product models listed in this manual. Some indicators of non-standard models may exceed the above requirements.