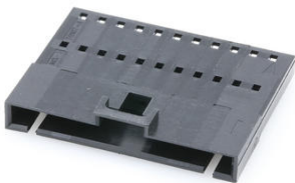




Part Number : [701070010](#)
Product Description : SL Wire-to-Wire Crimp
Housing, Single Row, Version A, without Mounting
Ears, 11 Circuits, Black
Series Number : 70107
Status : Active
Product Category : Connector Housings



Documents & Resources

Drawings

[701070010 sd.pdf](#)
[PK-70107-100-001.pdf](#)

3D Models and Design Files


[STEP AP242](#)
[SOLIDWORKS](#)
[Creo](#)

Specifications

[PS-70400-001.pdf](#)

Product Environment Compliance

Compliance

GADSL/IMDS	Not Relevant
China RoHS	 per SJ/T 11365-2006
EU ELV	Not Relevant
Low-Halogen Status	Not Low-Halogen per IEC 61249-2-21
REACH SVHC	Not Contained per D(2025)4165-DC (25 June 2025)
EU RoHS	Compliant per EU 2015/863

Compliance Statements

- EU RoHS

- REACH SVHC
- Low-Halogen

Industry Documents

- IPC 1752A Class C
- IPC 1752A Class D
- Molex Product Compliance Declaration
- IEC-62474
- chemSHERPA (xml)

Substances of Interest

- PFAS

EU RoHS Certificate of Compliance

Additional Product Compliance Information

Part Details

General

Status	Active
Category	Connector Housings
Series	70107
Description	SL Wire-to-Wire Crimp Housing, Single Row, Version A, without Mounting Ears, 11 Circuits, Black
Application	Signal, Wire-to-Wire
Comments	Version A without Mounting Ears
Product Name	SL
UPC	800754346375

Agency

CSA	LR19980
UL	E29179

Physical

Circuits (maximum)	11
Color - Resin	Black
Flammability	94V-0
Gender	Plug
Glow-Wire Capable	No
Lock to Mating Part	Yes

Material - Resin	Polyester
Net Weight	1.965/g
Number of Rows	1
Packaging Type	Bag
Panel Mount	No
Pitch - Mating Interface	2.54mm
Polarized to Mating Part	Yes
Stackable	No
Temperature Range - Operating	-40° to +105°C

Mates With / Use With

Mates with Part(s)

Description	Part Number
SL Single Row Crimp Housings and CPA Retainers	<u>70066</u>
SL Single Row Female Insulation Displacement Connector Assemblies	<u>70400</u>
SL Single Row Female Receptacles	<u>70430</u>

Use with Part(s)

Description	Part Number
SL Male Terminals	<u>70021</u>