

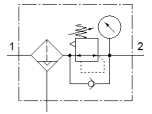
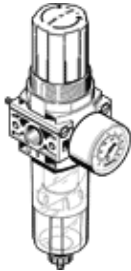
# filter regulator

## LFR-1/4-DB-7-MINI-H

Part number: 539686



Output pressure max. 7 bar, with pressure gauge, 40 µ filtration grade.



### Data sheet

| Feature                                 | Value   |
|---|---|
| Size                                    | Mini  |
| Width                                   | 44 mm   |
| Series                                  | DB  |
| Actuator lock                           | Rotary knob with lock   |
| Assembly position                       | Vertical +/- 5°   |
| Grade of filtration                     | 40 µm   |
| Condensate drain                        | semi-automatic  |
| Design structure                        | Filter regulator with pressure gauge  |
| Controller function                     | with secondary exhaust<br>with return flow                                  |
| Pressure gauge                          | with pressure gauge   |
| Operating pressure                      | 1.5 ... 10 bar  |
| Pressure regulation range               | 0.5 ... 7 bar   |
| Max. pressure hysteresis                | 0.5 bar   |
| Standard nominal flow rate              | ≥ 1,200 l/min   |
| Operating medium                        | Compressed air to ISO 8573-1:2010 [-:9:-]<br>Inert gases                    |
| Corrosion resistance classification CRC | 1 - Low corrosion stress  |
| Air purity class at output              | Compressed air in accordance with ISO8573-1:2010 [7:8:4]<br>Inert gases     |
| Medium temperature                      | -5 ... 50 °C  |
| Ambient temperature                     | -5 ... 50 °C  |
| Product weight                          | 200 g   |
| Mounting type                           | Optional<br>Line installation<br>with through hole<br>With mounting bracket |
| Pressure gauge connection               | G1/8  |
| Pneumatic connection, port 1            | G1/4  |
| Pneumatic connection, port 2            | G1/4  |
| Materials note                          | Conforms to RoHS  |
| Material seals                          | NBR   |
| Material rotary knob                    | POM   |
| Material filter                         | PE  |
| Material housing                        | PA-reinforced   |
| Material bowl                           | PC  |