

# “L” SERIES HANDLE

## Technical Information



**SURE GRIP**<sup>™</sup>  
CONTROLS INC.

1949 Keating Cross Road, Saanichton, British Columbia, Canada V8M 2A4  
Phone: 250-544-2207 Fax: 250-544-2279 [www.suregripcontrols.com](http://www.suregripcontrols.com)

# "L" Series Handle Technical Information

1949 Keating Cross Road  
Victoria, B.C. Canada V8M 2A4  
Phone: (250) 544-2207

Fax: (250) 544-2279  
Toll Free: 1-800-831-2278  
www.suregripcontrols.com

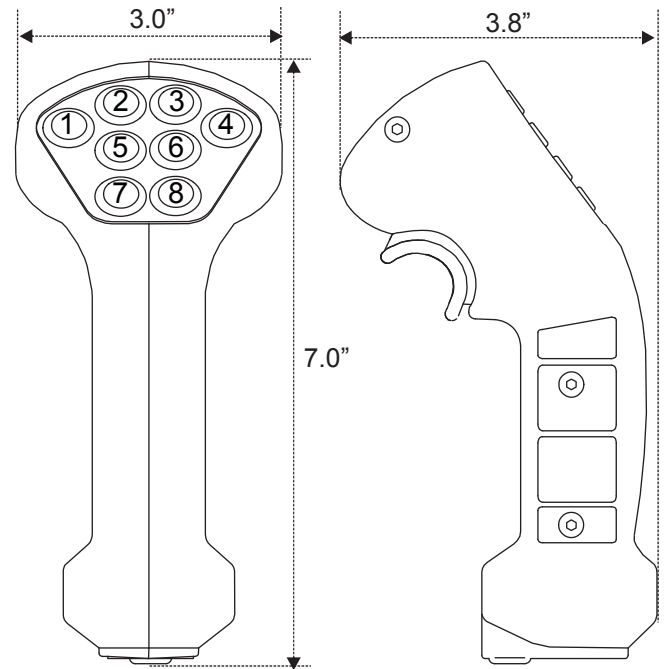
**SURE GRIP**  
CONTROLS INC.

## "L" Series Handle

Sure Grip "L" Series Control Grip is our Large handle commonly found on forestry, mining and construction machinery. The tough ABS housing combined with a comfortable shape creates a rugged lightweight control handle that has become very popular for extreme duty applications requiring up to 10 switches. We also have a keypad that can be installed on the left or right side of the grip for an additional 10 switches.

The stock handle configurations come with 2, 4, 6 or 8 thumb switches and a single or double acting trigger. The standard Sure Grip switches are covered with a tough, flexible membrane overlay that protects the switches from dirt and moisture.

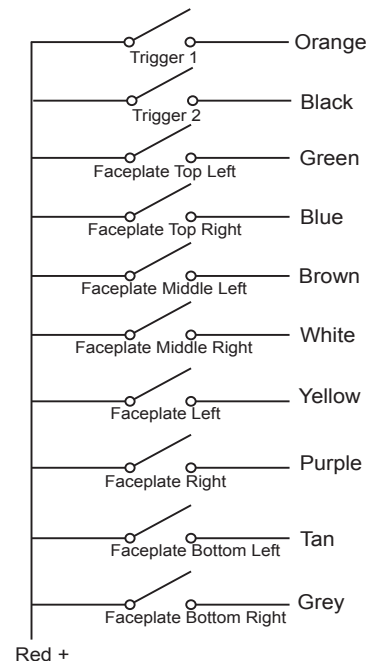
These grips are also very customizable and can be supplied with a deadman lever, toggle switches, push on-push off maintained switches, proportional modules, LED's and rocker switches. The "L" Series grips can also be installed on all of our electronic joysticks..



## "L" Handle Specifications

<b>Dimensions:</b>	7" x 3" x 2" wide
<b>Configuration Options:</b>	Custom configurable - refer to page 4 for available options. Call factory for further configurations.
<b>Weight:</b>	375 grams (9 oz.)
<b>Overlay:</b>	Embossed .007" polyester
<b>Case:</b>	1/8" thick, heavy wall ABS, available in grey or black
<b>Mounting Pin:</b>	1" diameter, 6061 aluminum
<b>Wire:</b>	Standard 10' @ 20 or 22 gauge
<b>Switch Current Rating:</b>	5 amps (Standard silver contact)
<b>Switch Life:</b>	10 million mechanical 2.5 million @ 500 mA DC (typical)

## "L" Handle Typical Wiring



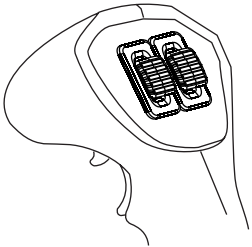
# "L" Series Handle Technical Information

1949 Keating Cross Road  
Victoria, B.C. Canada V8M 2A4  
Phone: (250) 544-2207

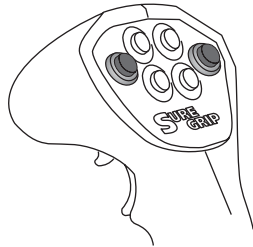
Fax: (250) 544-2279  
Toll Free: 1-800-831-2278  
www.suregripcontrols.com

**SURE GRIP**  
CONTROLS INC.

## "L" Handle Faceplate Configuration Examples



"L" Series handle with  
Dual Slider Modules



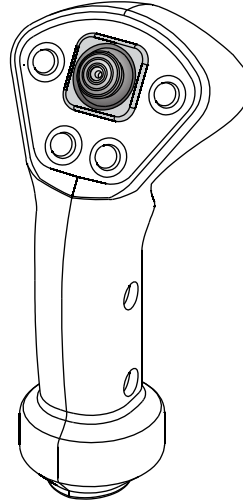
"L" Series handle with  
2 - Flex Button Actuators  
4 on/off switches



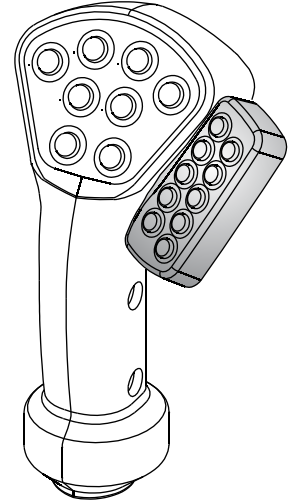
"L" Series handle with  
2 LED / 2 Toggle Switches  
2 on/off switches



"L" Series handle with  
1 Rotary Potentiometer  
5 on/off switches



"L" Series handle with  
1 Micro Joystick  
4 on/off switches



"L" Series handle with  
1 Left Hand Keypad (10 buttons)  
8 on/off switches

Refer to the Customized Handle Guide (Doc. #420.0032) for complete ordering details.

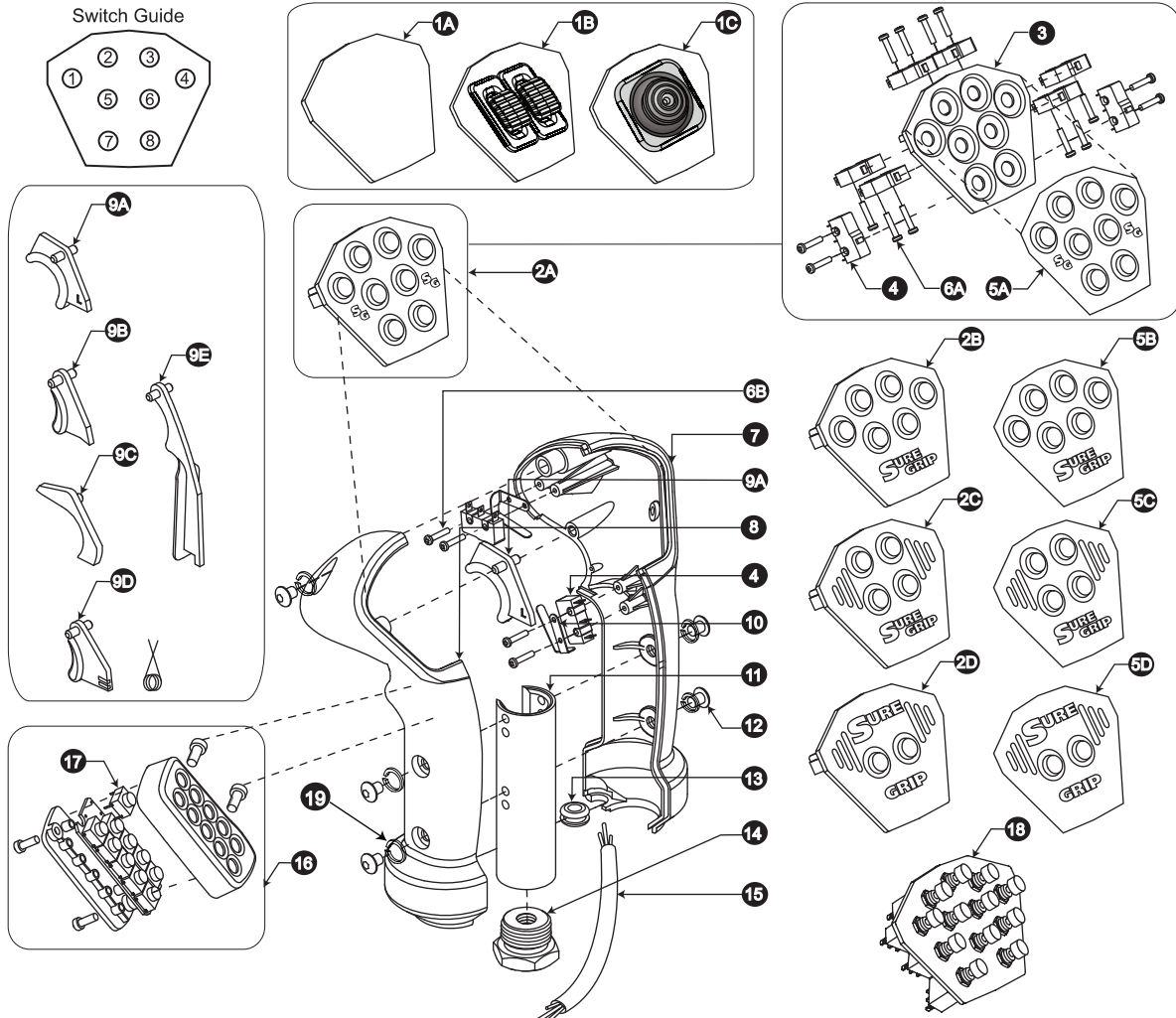
# "L" Series Handle Technical Information

1949 Keating Cross Road  
Victoria, B.C. Canada V8M 2A4  
Phone: (250) 544-2207

Fax: (250) 544-2279  
Toll Free: 1-800-831-2278  
www.suregripcontrols.com

**SURE GRIP**  
CONTROLS INC.

## "L" Handle Part List



FLG	PART#	DESCRIPTION	FLG	PART#	DESCRIPTION
1A	L-FP-00	"L" Blank Faceplate	7 B	L-HLR-Kit-B	"L" Handle Case Upgrade Kit Assy. - Black(Grey)
1B	L-FP-E-??	"L" Series Dual Slider Module (Call Factory)	9A	L-TR-02	"L" Double Trigger
1C	L-FP-E-J	"L" Series Dual Axis Micro Joystick (Call Factory)	9B	L-TR-01	"L" Single Trigger
2A	L-FP-A8	"L" 8 Switch Pack Assy.	9C	L-TR-00	"L" Trigger Insert
2B	L-FP-A6	"L" 6 Switch Pack Assy.	9D	TR-P1-A	Proportional Trigger/Spring Assy.
2C	L-FP-A4	"L" 4 Switch Pack Assy.	9E	TR-D1-G	Deadman Trigger Lever - Grey (Black)
2D	L-FP-A2	"L" 2 Switch Pack Assy.	10	LS-00	Leaf Spring for Trigger
3	L-FP-01	"L" Series Empty Faceplate	11	PN-03	Mounting Pin "L/S"
4	SW-00	Handle Switch, L/S	12	SC-02SS	10-32 x 7/16" Capscrew - Button Head
5A	L-ME-A8	"L" 8 Button Overlay	13	GR-01	3/8" x 1/4" Grommet
5B	L-ME-A6	"L" 6 Button Overlay	14	BU-00	Adapter Bushing - 1/4" Hole ( See Page 15 )
5C	L-ME-A4	"L" 4 Button Overlay	15	L2-M2-W	"L" Handle 2 Button Faceplate Wire Harness
5D	L-ME-A2	"L" 2 Button Overlay		L2-M4-W	"L" Handle 4 Button Faceplate Wire Harness
6A	SC-03	2 x 7/16" Tapping Screw - Pan Head (Faceplate)		L2-M6-W	"L" Handle 6 Button Faceplate Wire Harness
6B	SC-21	2 x 9/16" Tapping Screw - Pan Head (Trigger)		L2-M8-W	"L" Handle 8 Button Faceplate Wire Harness
7	L-HL-R-G	"L" Handle Case Right - Grey (Black) (L-HL-02 Handle Case Right - Old Style)	16	KP-10L1	Keypad 10 Button, (Fits Left Handle)
8	L-HL-L-G	"L" Handle Case Left - Grey (Black) (L-HL-01 Handle Case Left - Old Style)	17	KP-10R1	Keypad 10 button, (Fits Right Handle)
			18	SW-07	Key Pad Switch
			18	L-FP-A-B12	12 button "L" series faceplate assembly
			19	SC-20	10-32 Lockwasher

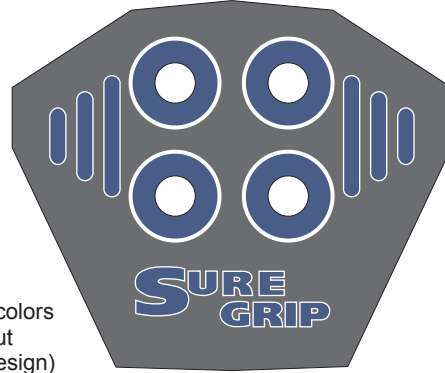
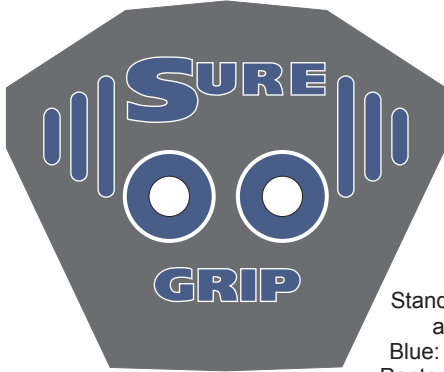
# "L" Series Handle Technical Information

1949 Keating Cross Road  
Victoria, B.C. Canada V8M 2A4  
Phone: (250) 544-2207

Fax: (250) 544-2279  
Toll Free: 1-800-831-2278  
www.suregripcontrols.com

**SURE GRIP**  
CONTROLS INC.

## "L" Handle Overlay Dimensions (Inches)



Standard Sure Grip colors  
and Switch layout  
Blue: GY157 (INK Design)  
Pantone 280C shade darker

